

SECURED PARTY SALE BY

# PUBLIC AUCTION

**LIVE ONSITE AND LIVE WEBCAST BIDDING**

- 3 DAYS • 5 LOCATIONS •
- NEW JERSEY • FLORIDA •

**BEAUTY, SKINCARE & WIPES MANUFACTURER**

## (2) "STATE OF THE ART" MANUFACTURING FACILITIES

- WET WIPE PRODUCTION LINES •
- BOTTLING & CANISTER LINES • CONVERTERS • BAGGERS •
- WRAPPERS • FILLING MACHINES • LABELERS • SEALERS •
- PACKAGING MACHINERY • S.S. TANKS & KETTLES • FORKLIFTS •
- LAB, SUPPORT & OFFICE EQUIPMENT •
- **±250,000.00 FINISHED GOODS INVENTORY •**

DISPOSABLE HYGIENE, LLC  
ANTHEM SOUTH, LLC

DBA



TO BE SOLD ON THE PREMISES AND BY LIVE INTERNET BIDDING ON THE FOLLOWING DATES, TIMES AND LOCATIONS

DATE	TIME	ADDRESS	CITY	ST
WED. OCTOBER 19 <sup>TH</sup>	10:30 A.M.	60 PAGE ROAD	CLIFTON	NJ
THURS. OCTOBER 20 <sup>TH</sup>	10:30 A.M.	25 CONTINENTAL DRIVE	WAYNE	NJ
THURS. OCTOBER 20 <sup>TH</sup>	12:00 P.M.	1225 MCBRIDE AVENUE	WOODLAND PARK	NJ
WED. OCTOBER 26 <sup>TH</sup>	10:30 A.M.	9710 NW 110TH AVENUE, STE 14	MEDLEY, (MIAMI)	FL
WED. OCTOBER 26 <sup>TH</sup>	5:00 P.M.	11210 NW 91ST STREET	MEDLEY, (MIAMI)	FL



**Aaron Posnik**  
AUCTIONEERS • APPRAISERS

# PUBLIC AUCTION

• DAY 1 • WEDNESDAY, OCTOBER 19<sup>TH</sup> ST

DISPOSABLE HYGIENE, LLC  
 ANTHEM SOUTH, LLC



TO BE SOLD ON THE PREMISES AND BY LIVE INTERNET BIDDING  
 ON THE FOLLOWING DATES, TIMES AND LOCATIONS

DATE	TIME	ADDRESS	CITY	ST
WED. OCTOBER 19 <sup>TH</sup>	10:30 A.M.	60 PAGE ROAD	CLIFTON	NJ
THURS. OCTOBER 20 <sup>TH</sup>	10:30 A.M.	25 CONTINENTAL DRIVE	WAYNE	NJ
THURS. OCTOBER 20 <sup>TH</sup>	12:00 P.M.	1225 MCBRIDE AVENUE	WOODLAND PARK	NJ

**INSPECTIONS:** NEW JERSEY (ALL LOCATIONS) –  
 TUESDAY, OCTOBER 18<sup>TH</sup> – 10:00 A.M. TO 4:00 P.M.  
 & MORNING OF SALES (EXCEPT WOODLAND PARK) – 8:30 A.M. TO 10:30 A.M.

**AIRPORT:**  
 NEWARK LIBERTY INTERNATIONAL AIRPORT (EWR) -  
 10 TOLER PLACE, NEWARK, NJ, APPROX. 24 MINUTES TO SITE.

**DIRECTIONS TO 60 PAGE ROAD, CLIFTON, NJ:**  
**FROM NEWARK LIBERTY INTERNATIONAL AIRPORT** - HEAD TOWARD FRELINGHUYSEN AVE ON TOLER PL. TURN RIGHT ONTO FRELINGHUYSEN AVE (RT-27) CONTINUE ON SHERMAN AVE. TURN LEFT ONTO MURRAY ST. TURN RIGHT ONTO CLINTON AVE. CONTINUE ON LINCOLN PARK. TURN LEFT ONTO BROAD ST. APPROX. 1.30 MILES, TURN RIGHT ONTO LOMBARDY ST. TURN LEFT ONTO MCCARTER HWY (RT-21). APPROX. 6.35 MILES, TAKE EXIT 9 TOWARD CLIFTON ONTO RT-3 W (STATE RT 3). APPROX. 4.7 MI. TAKE RAMP TOWARD BLOOMFIELD AVE/CLIFTON. TURN RIGHT ONTO BLOOMFIELD AVE (CR-622). TAKE THE 2<sup>ND</sup> EXIT FROM ROUNDABOUT ONTO BLOOMFIELD AVE (CR-622). TURN RIGHT. TURN SLIGHTLY LEFT TOWARD BRIGHTON RD. CONTINUE ON BRIGHTON RD. TURN RIGHT ONTO PAGE RD., (WATCH FOR AUCTION SIGNS)

**HOTELS:**  
**HOLIDAY INN EXPRESS HASKELL** - 330 UNION STREET, HASKELL, NJ,  
 1-(973) 839-4405  
**HAMPTON INN AT THE MEADOWLANDS** - 304 PATERSON PLANK ROAD, CARLSTADT, NJ,  
 1-(201) 935-9000  
**HOLIDAY INN EXPRESS & SUITES** - 100 PATERSON PLANK ROAD, CARLSTADT, NJ,  
 1-(201) 544-0190

**TERMS & CONDITIONS:**  
 EVERYTHING SOLD "AS IS/WHERE IS"

**TERMS OF SALE:**  
 25% DEPOSIT BY CASH, CERTIFIED OR BANK CHECK, OR BANK WIRE TRANSFER. 15% BUYERS PREMIUM APPLIES ON ALL ONSITE PURCHASES. 18% BUYERS PREMIUM APPLIES ON ALL ONLINE PURCHASES. PERSONAL OR COMPANY CHECK ACCEPTED ONLY IF ACCOMPANIED WITH A BANK LETTER GUARANTEEING PAYMENT. EXAMPLE OF BANK LETTER OF GUARANTEE: THIS BANK GUARANTEES PAYMENT TO AARON POSNIK & CO., INC. ON ACCOUNT # \_\_\_\_\_ UP TO THE AMOUNT OF \$ \_\_\_\_\_ FOR PURCHASES MADE AT THE DISPOSAL HYGIENE, LLC/ANTHEM SOUTH LLC, D/B/A ANTHEM AUCTION TO BE HELD ON WEDNESDAY, OCTOBER 19<sup>TH</sup> AND THURSDAY, OCTOBER 20<sup>TH</sup>. NO PURCHASE REMOVED UNTIL COMPLETE SETTLEMENT IS MADE. OTHER TERMS TO BE ANNOUNCED AT

**SALES TAX:**  
 NEW JERSEY SALES TAX LAWS APPLY. DEALERS BRING COPY OF EXEMPT CERTIFICATE.

**BID LIVE BY PHONE:**  
 CALL US BY **MONDAY, OCTOBER 17<sup>TH</sup>** TO SET UP THE DETAILS.

**BID LIVE BY INTERNET:**  
 VISIT OUR WEBSITE AT POSNIK.COM OR BIDSPOTTER.COM FOR INSTRUCTIONS ON BIDDING ONLINE.

**BID BY MAIL:**  
 IF YOU CANNOT ATTEND THIS AUCTION IN PERSON WE WILL BE HAPPY TO RECEIVE YOUR BID ON THE ITEMS THAT YOU DESIGNATE, IF YOUR BID IS SENT BY MAIL, FAX OR MAIL AND RECEIVED BY OUR OFFICE AT LEAST 24 HOURS PRIOR TO THE COMMENCEMENT OF THE SALE. IF YOU WISH TO BID BY MAIL, KINDLY PROVIDE A COMPLETE LIST OF THE ITEMS DESIRED AND ENCLOSE A 25% DEPOSIT BY CERTIFIED CHECK. YOU WILL BE RESPONSIBLE FOR PURCHASES IF YOU ARE THE HIGH BIDDER, UNDER THE TERMS AND CONDITIONS TO BE ANNOUNCED AT TIME OF SALE. IF YOU ARE THE SUCCESSFUL BIDDER, WE WILL NOTIFY YOU WITHIN 24 HOURS OF THE SALE AND YOU MUST MAKE PAYMENT OF THE BALANCE DUE BY WIRE TRANSFER TO OUR BANK WITHIN 24 HOURS OF NOTIFICATION. IF YOU ARE UNSUCCESSFUL IN YOUR BID, YOUR DEPOSIT WILL BE RETURNED TO YOU WITHIN 72 HOURS OF THE SALE.

THE INFORMATION DESCRIBED IN THIS BROCHURE IS CORRECT TO THE BEST OF OUR KNOWLEDGE BUT WE CANNOT GUARANTEE SAME. IT IS FOR THIS REASON THAT BUYERS SHOULD AVAIL THEMSELVES OF THE OPPORTUNITY FOR INSPECTION PRIOR TO THE SALE.



2016 ELSNER NONWOVENS REWINDER ENR-1000



2019 VIROO WET WIPES PACKING MACHINE VPD250



2021 TRAKYA WET WIPES MACHINE



2020 TRAKYA WET WIPES MACHINE

**Aaron Posnik**

AUCTIONEERS • APPRAISERS

2013



2013 AULONA PACKAGE SEALER WFPN-160

2013



2013 AULONA CUTTING & STACKING MACHINE WCPN-4800



AULONA LABEL APPLICATOR-UNWINDER WFPN-160

**WET WIPES PRODUCTION LINES**

Consisting Of:

- ★ **2016 Kansan** Automatic Flat Pack Wet Wipes Converting Machine, Mod. Quick Stack 8, S/N 152, w/ **(12) Maxcess Polaris DP20** Web Guide Controllers & **Omron** Touch Screen Control
  - **2016 Kansan DP Dynamic Plus** Automatic Wet Wipe Flow Pack Machine, Mod. ACURAPACK 140, S/N 160 w/ 12' Motorized Tunnel Conveyor, Omron Touch Screen Control
  - Film Unwinder & Labeler, Skid Mounted w/ **(2) Avery Dennison ALS204** Labelers, A7586 Unwinder 204LH & Counters
  - **2021 Grau** S.S. Mixing Tank, 2500 Liter, Mod. RM1750/1500KP, S/N A010-21, w/ Distribution Pump
  - **34"x7" Motorized Interlok** Production Belt Conveyor w/ **Sew Eurodrive** Drive Motor, 2 H.P. & Stands • **(2) 6-Step Alum.** Crossover Conveyor Stairway Platforms
  
- ★ **2013 Tecknoweb Aulona** Cutting & Stacking Machine, Mod. WCPN-4800 Profit 6
  - **Aulona** 6-Station Unwinder & Former, Mod. WCPN-4800, S/N 10003071
  - **Aulona** Control Cabinet WCPN-4800
  - **Aulona** Wrapping & Sealing Machine, Mod. WFPN-160
  - **Aulona** Substrate Label Applicator, Mod. WFPN-160
  - **Aulona** 10'x8' Motorized Conveyor, Mod. WFPN-160
  - 1,000 Gal. S.S. Tank, 42" Dia.



S.S. TANK



2021 GRAU MIXING TANK

2016



2016 KANSAN WET WIPES FLOW PACK MACHINE ACURAPAC 140

2016



2016 KANSAN WET WIPES CONVERTING MACHINE QUICKSTACK 8

**Aaron Posnik**  
AUCTIONEERS • APPRAISERS

# PUBLIC AUCTION

• DAY 1 • WEDNESDAY, OCTOBER 19TH



2017

2017 OZYILMAZ ETI-PAK 12-SLOT CANNISTER MACHINE

### CANISTER LINE

- **Ozvilmaz ETI-PAK 12-Slot S.S. Canister Mach.**, w/ **Shneider Elec. Magelis Touch Controls**, 4' Infeed & 5' Outfeed Motorized Conveyors, w/ **Vibreline 7"x12" S.S. Lid Feeding Elevator**, 48" Dia. S.S. Turntable Feeder & 36" Dia. S.S. Turntable, 50-Gal. Alum. Tank •

### NON WOVENS REWINDER

- **2016 Elsner ENR-1000 Fully Automatic Non Wovens Perforator Roller Wipes Rewinder**, 4-Roll, S/N 45500-087, 460 Vac, 3 Ph., 60HZ w/ **Sick M4000 Safety Light Curtain**, US-1220D Unwind Stand, S/N 45550-094 & **Nordson Pro Blue 10 Elec. Gluer**, TC-200 Controls •

### WET WIPES MACHINES

- **2021 Trakya Makine Port. 2-Lane Prep Pad Swab Machine**, S/N 00420 w/ **Siemens Simatic HMI Touch Screen Control**, •
- **2020 Trakya Makine Port. 2-Lane Prep Pad Swab Machine**, S/N 00402 w/ **Siemens Simatic HMI Touch Screen Control** •

### WET WIPES PACKING MACHINES

- **2019 Viroo Semi-Automatic 4-Side, Mod. YPD250**, S/N 2019-460 •
- **Bartelt Classic 1M-7-14 Packager**, Single Wet Wipes Machine, S/N 3574 •
- **Ames "Packager" Single Wet Wipes Machine**, S/N 10018 •

### SHRINK SLEEVE APPLICATOR

- **2018 Shree Bhagwati Automatic Shrink Sleeve Applicator**, Mod. SB Sleeve 60, S/N 2018080, w/ 2018 Eastey 36" Dia. Turntable Tumbler, TT361500, w/ (2) Heat Tunnels, Indiv. Controllers, 24'x4" S.S. Infeed Conveyor •

### SHRINK WRAPPERS

- **PolyPack Port. S.S. Continuous Motion Printed Shrink Wrapping Bundler**, Mod. CFH-16-24-32VL, S/N 3224 w/ 10' S.S. Infeed Conveyor •
- **Shanklin Port. Shrink Tunnel Wrapper**, 9'x15" Conveyor, ¾ H.P., 3 Ph., Mod. T-62, S/N T-01365 •
- (2) **Heat Seal Turbo Tunnel Port. Shrink Wrap Tunnel Wrappers**, 5'x30" Conveyor, 3 Ph., Mod. T-4832/12LDR •
- **APM Port. Wide Roll Horiz. Flow Wrapper**, Mod. ML-1-22, S/N 331 w/ Auto Bottom Overlap Seal Shrink Wrapper, Quick Threading •

### LABEL MACHINES

- (2) **Allusi S.S. Auto. Round Bottle Labelers** w/ **Lion Precision LRD 300 Sensors** •
- **Label-Aire Port. Pressure Sensitive Labeler**, Mod. 2115ST w/ **Penta Drive 8'x4" Belt Conveyor** •
- **CVC Gallon Bottle Labeler**, w/ 6'x16" Belt Conveyor •



2021

2021 FLUID BOTTLING MACHINE

### BOTTLING LINE

- 2021 Fluid Solutions Bottling Line Consisting Of:**
- Automatic 6-Head Gravity Filler w/ Dividing Fill Head Bar, Touch Screen Controls
  - 4-Station Capper Spindle Type, 304 S.S. Frame, (4) Sets Spindle Wheels, Vari-Spd., 20 Amp, w/ 4-Pc. Cap Stabilizer
  - 10' Filler Conveyor, Vari-Spd.
  - 15' Capping Conveyor
  - Bottle Loader 40" Turntable
  - Bottle Transfer Station
  - Foyo Small Bottle Labeler

### BOTTLE FILLER

- **2019 Oveco S.S. Port. 6-Slot Bottle Filler**, S/N AN20191023-DBM, w/ (2) S.S. 30" Dia. Port. Rotary Turntables & (3) Gzwanshu Vibratory Feeders w/ CUH Dig. Controllers & Stands •

### TUBE FILLERS

- **2018 Kentex Port. S.S. Automatic Tube Filler**, 50 Tubes/Min., 3 Ph., Mod. T1058, S/N TK860-HA0, 12-Station Filler, Hopper, Safety Enclosure, w/ 2019 Industrial Chiller 68KW, 110V, 1 H.P., 1 Ph. & Coini Wexter Port. Water Chiller, Mod. CWA12PTS, S/N 2096342 •
- **2019 Alusi Port. S.S. Automatic Tube Filling & Sealing Machine**, 12-Station, Enclosure, Mod. GF-400L, S/N 785 •

### FILLERS

- (3) **Simplex Single Head Volumetric Piston Fillers**, Mod. AS-1 & AS-2, S/N's 9120, 9121 & 9138 w/ **KQ Genesis Motor Drives & Stands** •
- **2016 Guangzhou Heyi Small Sachet Filler/Sealer/Film**, Mod. HY-V50 •
- (3) **2018 Guangzhou Heyi S.S. Port. Single Vat Fillers**, 150ML Cap. •
- **Guangzhou Heyi Port. S.S. Double Filler**, 300ML •
- **2 Step Portable S.S. Sachet Filler/Sealer** •



2018

2018 GUANGZHOU TRIPLE LANE MUD MASK MACHINE



2018

2018 OVECO HAIR CAP MACHINE



2016

2016 SMALL SACHET MACHINE



2018

2018 KENTEX AUTOMATIC TUBE FILLER T1058



2019

2019 ALUSI AUTO-FILLER & SEALER GL-400L

**Aaron Posnik**

**AUCTIONEERS • APPRAISERS**



**2021**

**2021 AILUSI EUMULSIFYING MIXING SYSTEM**

**EMULSIFYING MIXERS**

- **2021 Guangzhou Allusi S.S. Vacuum Emulsifying Mixer, Mod. AVE-100, S/N 2021-0340 •**
- **2019 Guangzhou Allusi S.S. Vacuum Emulsifying Mixing System, Mod. AVE-F 5000L**
  - (2) 5,000 Liter S.S. Mixing Tanks, w/ Homogenizers •
  - (2) 375 Liter S.S. Mixing Tanks, w/ Homogenizers •
- **30'x4' S.S. & Alum. Platform, 10-Step Staircase w/ 4'x9' S.S. Platform Hyd. Elevator Lift •**



**EMULSIFYING MIXING TANK**

**FACIAL MASK MACHINES**

- **2019 Viroo Semi-Auto Facial Mask Filling & Sealing Machine, Mod. VPD200, S/N 2019-409 •**
- **2018 Viroo Semi-Auto Facial Mask Filling & Sealing Machine, Mod. VPB200, S/N 2018-41 •**
  - **2019 Oveco 3 Step Face Mask Mach., Filler/Sealer •**
- **(3) 2016 Oveco Face Mask Mach.'s Port. Sachet Filler/Sealer •**
- **(6) 2016 Oveco Face Mask Mach.'s Port. Sachet Filler/Sealer •**
  - **2019 Oveco 2-Step Lip Kit TS3 •**
- **2018 Guangzhou Face Mask Mach. 3-In-1 Filler Lotion Sealer •**



**2016**

**2016 MIXER DIRECT EMULSIFYING SYS.**



**2016**

**2016 MIXER DIRECT EMULSIFYING SYSTEM.**

**MUD MASK MACHINES**

- **(3) 2018 Guangzhou Heyi Triple Lane, 3-Ingredient Sachet Sealer/Filler/Punch •**
- **2017 Guangzhou Single Mud Mask Machine •**

**HAIR CAP MACHINE**

- **2018 Oveco Port. S.S. Folder, Filler/Sealer •**

**POUCH MACHINE**

- **2018 Oveco S.S. Pouch Filler, Cap Twister, Cream & Juice Filler, Mod. Z1D-6 •**

**CASE SEALERS**

- **(7) Eastey SB-2EX Port. Ind. Case Taper/Sealers •**
- **(2) 3M-Matic 77A Port. Case Sealers, Mod. 28600 •**
  - **Eagle T100SM Port. Case Sealer •**



**2017**

**2017 MXD DIRECT MIXING TANK**

**S.S. TANKS**

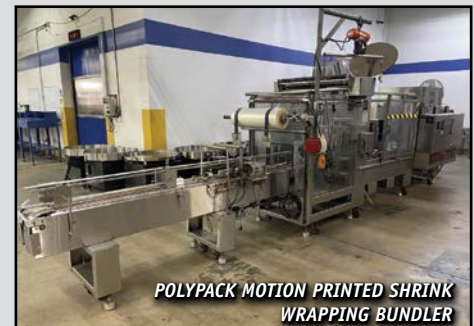
- **2016 Mixer Direct 1,000-Gal. S.S. Mixing Tank, 67" Dia. 316 SS w/ Lightning SPX Flow Mixer, 3 H.P., 3 Ph., S/N SYS4TSC-1000-0031490A •**
- **2016 Mixer Direct 1,000-Gal. S.S. Mixing Tank w/ Weg Mixer, ¾ H.P., 1 Ph., S/N SYS4TSC1000-002-0031490B, w/ Erect-A-Step 9'x3' Platform w/ Handrails & Staircase •**
- **(4) 2016 Mixer Direct 500-Gal. S.S. Mixing Tanks, w/ Weg Mixers, 52" Dia., 316 S.S., ¾ H.P., 3 Ph., S/N's TKS6TSC00500-002-0031943D, TKS6TSC00500-002-0031943B, TKS6TSC00500-001-0031943A & TKS6TSC00500-001-0031943C, w/ Erect-A-Step 9'x3' Platform, w/ Handrails & Staircase •**
- **(2) 2020 Grau S.S. Mixing Tanks w/ Mixers, 500 Liter, Mod. R.-1397/1250/KP, 4 KW Motor •**
- **2017 MXD Process 300-Gal. S.S. Mixing Tank, 45" Dia., 316 S.S., w/ MXD Process Mixer, 10 H.P. •**
- **2017 MXD Process 30-Gal. S.S. Kettle Tank, S/N 0034069-002 •**
  - (2) Port. S.S. Pressure Pump Tanks, 50-Gal. •
  - 100-Gal. Alum. Vat Tank •

★ **1,500-Gal. Poly Tank w/ Stand** ★



**2019**

**2019 ALLUSI AVE F-5000**



**POLYPACK MOTION PRINTED SHRINK WRAPPING BUNDLER**



**2019**

**2019 VIROO WEIPEI FACIAL MASK FILLER-SEALER VPD200**

**Aaron Posnik**  
**AUCTIONEERS • APPRAISERS**

# PUBLIC AUCTION

• DAY 1 • WEDNESDAY, OCTOBER 19TH



(2) I.R. AIR COMPRESSORS



2018 QUINCY AIR COMPRESSOR &



LANTECH STRETCH WRAPPER Q300

**WATER TREATMENT SYSTEM**

**2016 H2O Solutions USP Purified Water System Consisting Of:**

- Automatic Water Softening System #S-3018-SNGL
- Automatic Carbon Filtration System #C-2418-TC
- Reverse Osmosis Unit, DT Series
- Grundfos CRNE 5-9 Vertical Stage Pump
- Glasco Ultraviolet Reduction & Disinfection Units
- Exchange Mixer Bed Deionizer
- Master Control Panel, Etc., Etc.
- ★ Reverse Osmosis Water Purifier System 15-Gal./Min ★
- ★ Marlo Water Softener w/ Brine Condensate Tank ★



2016 H2O SOLUTIONS PURIFIED WATER SYSTEM

**BOILER**

- **2019 Fulton Classic** Tubeless Fuel Fired Steam Boiler, Nat. Gas, 670,000 BTU Output, 690#s Steam/Hr., Mod. FB-020-A, S/N F2014062A, w/ Fulton Horiz. Feed Water Tank & Fulton F30 Blow Down Tank



2019 FULTON CLASSIC BOILER

**AIR COMPRESSORS**

- **2018 Quincy** Rotary Screw, 50 H.P., 3 Ph., Mod. QGD-50, w/ Quincy Air Dryer, Mod. QPDC0360, (2018) & Quincy GC-5-450 Separator
- I.R. Rotary Screw, 30 H.P., 3 Ph., Mod. SSR-EP305E
- I.R. Rotary Screw, 20 H.P., 3 Ph., Mod. SSR-EP20

**SUPPORT EQUIPMENT**

- Speedaire Port. Air Compressor, 5 H.P.
- (12) Uline & Global Pallet Jacks, 5,000# Cap.
- Dump Hoppers • Dock Plates • Hand & Barrel Trucks
- Cargo Dividers • Stock & Step Ladders
- Nestaflex 7' Port. Flex Conveyor
- (20) Ass't Belt Conveyors, 3'-16'
- (45) Sections Steel Pallet Racking w/ Wire Decks
- (20) Flameproof Cabinets • (20) Ass't Shop Carts
- Sanitary, Diaphragm & Sump Pumps • Transformers
- Power Tools • Air Hose • Shop Vac's
- Strapping & Striping Mach's • Pedestal & Wall Fans
- (25) Anti-Fatigue Stools • Eyewash Stations
- First Aid Kits • (350) Plastic Totes • (100) Poly Buckets
- Lockers • Foreman's Desks • Waste Receptacles • Etc. • Etc.

**PALLET WRAPPERS**

- (2) Lantech Semi-Auto, 65" Dia. Turntables, Mod. Q300

**LAB EQUIPMENT**

- Neogen Accupoint Sanitation Monitor System, 9904A
- Mettler 450 Toc Carbon Dioxide Analyzer
- Quincy & LSS 1D Lab Ovens
- So Low Environmental Stability Chamber Incubator, SCN4-24
- Brookfield & NDJ Viscometer
- Omax Microscoper • Vevor Centrifuge
- Poly Science Water Bath
- (20) Ass't O'Hause Lab, Bench & Platform Scales
- (15) Optima, Sartorius, Globe, Uline & Prime Platform Scales
- Mettler & Rubbermaid Dig. Scales
- PH Meters • Hot Plates • Hack Dig. Titrator
- (2) Haug Pack Vac Leak Detectors
- (15) Ika Everstar, Silverman & Cole Palmer Lab Mixers
- (7) Ass't Long Shaft Mixers
- Glass Beakers, Sampling Kits, Tubes, Vials, Stir Bars, Pipettes, Poly Jars
- Lab Tables, Sinks & Stools • Etc. • Etc.



HEPA FILTRATION ROOM



2003 WASTEQUIP BALER



REVERSE OSMOSIS SYSTEM



2019 OVECO BOTTLE FILLER

**Aaron Posnik**  
AUCTIONEERS • APPRAISERS



**SIMPLEX PISTON FILLERS**

**FORKLIFTS**

- (2) 2018 Raymond Elec. Stand-Up Reach Forklifts, 3,000# Cap., 227" Lift Ht., ROPS, Side Shifter, Solid Tires, Mod. 415-C30TT, S/N 415-18-58806, (525 Hrs.), S/N 415-18-58809, (689 Hrs.) •
- Doosan LP Forklift, 3,500# Cap., 187" Lift Ht., ROPS, Side Shifter, Solid Tires, Mod. PR0520, (9,684 Hrs.) •

**WALKIE PALLET TRUCKS**

- 2020 Raymond Elec. Walkie Pallet Truck, 4,500# Cap., Mod. 8210, S/N 821-20-46120 •
- 2019 Raymond Elec. Walkie Pallet Truck, 4,500# Cap., Mod. 8210, S/N 821-19-40062 •
- 2018 Raymond Elec. Walkie Pallet Truck, 4,500# Cap., Mod. 8210, S/N 821-18-26277 •
- (2) Toyota Elec. Walkie Pallet Trucks, 4,500# Cap., Mod 8HBW23, S/N's 35772 & 15069 •

**FLOOR SWEEPER**

- 2018 Global Industrial Elec. Auto. Floor Scrubber, Mod. 261990 •

**INVENTORY**

- Latex Free Lab Coats • Bouffant Caps • Beard Covers •
- Poly Bags • Shoe Covers • Cold Packs • Clear Tape •
- Hot Melt Sealing Tape • Shipping Containers •
- Disinfectant Wipes • Masks • Etc. • Etc. •

**• ATTEND • BUY • SAVE •**



**GUANGZHOU S.S. FILLERS**

**MISCELLANEOUS MACHINERY**

- 2001 Techno Vibrazioni S.S. Mechanical Feeder, 60" Dia., S/N 6742, w/ 8'x18" Elec. Elevator •
- 2020 Ceia Industrial Metal Detector, Mod. THS-3F •
- (2) S.S. Weight Checkers, w/ Conveyors •
- (4) Sharp Pkg Tabletop Bagger/Printers, Foot Operated, 1 Ph. •
- (2) Automated Pkg Autobag PS125 Tabletop Auto Bagger/Printer, 1 Ph. •
- Terra Universal Flow Hepa Filtration Room, 6'x6', Mod. 6600-60, S/N 60230434 •
- (2) Terra Universal Flow Hepa Filtration Rooms, 4'x4' •
- Hangzhou 60" S.S. Nonwoven Elec. Unwinder •
- UTI 6'x6' Steel Whisper Flow Filter Sys. Clean Room •
- Pillar Induction Cap Sealer, Mod. Unifoiler, S/N 64322 •
- (4) Sharp Bagging/Printing Machines •
- (2) Autobag One Step Auto Bagging Machines •
- Quen Silver Shoe Sleeve Machine, XT-46C •
- Miller Thunderbolt XL 225 Amp AC/DC Arc Welder •
- (7) Eastey 36", 300# Cap., Tumbler Turntables, (2017 & 2018) •
- (8) Keyence MK Series Port. Inkjet Printers • Etc. • Etc. •



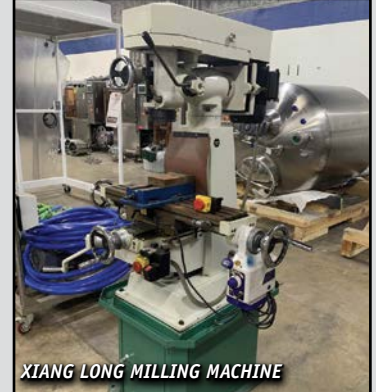
**AMP FLOW WRAPPER**



**PRESSURE TANKS**

**MACHINE TOOLS**

- Bridgeport Vert. Milling Machine, Power Feed 9"x36" Table, 1 H.P., 3 Ph., S/N 54187, w/ DRO •
- Xiang Long Milling Machine, 6"x26" T-Slot Table, 1½ H.P., 1 Ph., w/ Rapid Transfer & 4" MM Vise •
- Max-Turn 800 Deluxe Tool Room Lathe, 16"x33" BC w/ Tooling •
- Central 9"x12" Horiz. Metal Band Saw, 1 H.P. •
- (2) Central 6T D.E. Horiz. Metal Band Saws, 1 H.P. •
- Craftsman 8" D.E. Bench Grinder/Buffer, 1 Ph. •
- Delta 14" Drill Press, Pedestal Type, 1 Ph. •
- King 13" Drill Press, Pedestal Type, 1 Ph. •
- 20-Ton Hyd. Shop Press •
- Machinist's Vises • Rotary Tables • Lathe Tooling • Etc. •
- Rockwell 12" Disc Sander, 1 Ph. •
- Ryobi Tilt Arbor Table Saw, 1 Ph. • Etc. • Etc. •



**XIANG LONG MILLING MACHINE**

**OFFICE MACHINES**

- (2) Canon Imagerunner Advance All-In-One Machines •
- Sony 70" 4K Ultra HD Smart Led TV, Wall Mtd •
- LG 48" Led TV, Wall Mtd. • LG 46" HDTV •
- Yealink Phone Sys. w/ (30) Handsets •
- (2) Yealink HD-1P Conference Phones •
- (14) HP LaserJet P1102W & P1109W Printers •
- (5) HP LaserJet Pro Multifunction Machines •
- (30) Ass't Samsung Monitors •
- (6) Fellowes & Amazon Basics Paper Shredders •
- (2) Zebra ZP45-CTP Printers • Zebra ZP450 Label Printer •
- Quen XT-46C Intelligent Shoe Cover Dispenser •
- Frigidaire 2D S.S. Refrigerator/Freezer •
- (4) Ass't Undercounter Refrigerators •
- Microwave Ovens • Keurig Coffee Maker •
- Vac's • Etc. • Etc. •

**OFFICE FURNITURE**

- Latest Type Cherry Furnishings Including:
  - (25) 60" L-Shaped Secretarial Desks •
  - (15) Ass't Cherry Executive Desks •
  - Bookcases • Lateral File & Storage Cabinets •
- ★ 12' Glass Top Boat Shaped Conference Table w/ (9) Sitonit Leather Chairs ★
- 42" Dia. Oak Conference Table w/ (5) Side Chairs •
- ★ 6'x6' Cherry Receptionist's Desk ★
- (80) Executive, Secretarial, Arm, Side & Stack Chairs •
- 2, 3, 4 & 5 Drawer Lateral & Vertical File Cabinets •
- Poly Folding Tables • Marking & Bulletin Boards •
- Clocks • Wall Decor • Gd. Qty. Office Supplies • Etc. • Etc. •



**2018 RAYMOND REACH TRUCK 1 OF 2**



**DOOSAN FORKLIFT**

**Aaron Posnik**  
**AUCTIONEERS • APPRAISERS**

**• DAY 2 • THURSDAY, OCTOBER 20<sup>TH</sup> STARTING AT 10:30 A.M. (ET)  
LIVE ONSITE AND LIVE WEBCAST BIDDING  
25 CONTINENTAL DRIVE WAYNE, NEW JERSEY •**



2018 RAYMOND REACH TRUCK



CLARK FORKLIFT W-ROLL CLAMP



TOYOTA FORKLIFT



GENIE SCISSOR LIFT

**REACH TRUCK**

- 2018 Raymond Elec., 3,500# Cap., 221" Lift Ht., Sideshifter, Mod. 720-R35TT, S/N 720-18-AC033U9, (3,025 HRS.) •

**FORKLIFTS**

- Toyota, LPG, 5,000# Cap., 189" Lift Ht., Sideshifter, ROPS, Solid Tires, Mod. 8FGCU25, S/N 51437, (7,456 Hrs.) •
- Clark LPG, 2,500# Cap., 189" Lift Ht., Sideshifter, ROPS, Solid Tires, Mod. CGC25, S/N 0332-9467ER, (1,132 Hrs.) •
- Clark Elec., 2,500# Cap., 205" Lift Ht., Sideshifter, ROPS, Solid Tires, Mod. E2G25, S/N 0055-6809ER, (7,868 Hrs.) •

**PALLET TRUCKS**

- 2021 Raymond Elec. Ride-On Pallet Truck, 6,000# Cap., Mod. 8410, S/N 841-21-59821, (516 Hrs.) •
- 2021 Raymond Elec. Ride-On Pallet Truck, 6,000# Cap., Mod. 8410, S/N 841-21-59847, (682 Hrs.) •
- 2020 Raymond Elec. Walkie Pallet Truck, 6,000# Cap., Mod. 8210, S/N 821-20-46106, (730 Hrs.) •
- Toyota Elec. Walkie Pallet Truck, 4,500# Cap., Mod. 8HBW23, S/N 15448, (739 Hrs.) •
- (2) Global Hyd. Pallet Jacks, 5,500# Cap. •
- ★ (2) Cascade Paper Roll Clamps ★

**SCISSOR LIFT**

- Genie Scissor Lift, 19' Lift Ht., 5'x2' Platform, 500# Cap., Mod. GS-1930, S/N GS-11197, (582 Hrs.) •

**PALLET WRAPPER**

- Lantech Stretch Wrapper, 66" Dia. Rotary Turntable, Mod. Q300 •

**PALLET RACKING**

- (184) Sections Teardrop Pallet Racking, 12'x42"x18' w/ Wire Decking •



(184 SECTIONS)

PALLET RACKING

**SUPPORT EQUIPMENT**

- Optima Platform Scale, Mod. OP-902, 4x4 Platform •
- (2) Tri-Arc 6' Port. Stock Ladders •
- Husky 8' Fiberglass Stepladder •
- 5'x6' Magnesium Dock Plate •
- 5' Port. Basket Lift • Barrel Truck •
- Shop Fans • Stock Carts • Etc. •
- ★ (6) Yale, Batterymate & Xtreme Battery Chargers ★

**FINISHED GOODS INVENTORY**

- (135,000) Pkgs. Wipes Plus Disinfecting Wipes •
- (85,000) Pkgs. Wondra Facial Cleansing Wipes •



WET WIPES INVENTORY

**• DAY 2 • THURSDAY, OCTOBER 20<sup>TH</sup> STARTING AT 12:00 NOON (ET)  
ONLINE BIDDING ONLY**

**1225 MCBRIDE AVENUE WOODLAND PARK, NEW JERSEY •**



CONFERENCE TABLE & CHAIRS



SHARP TV & CRENDENZA

**LATE TYPE OFFICE FURNISHINGS**

- 8' Cherry Oval Conference Table w/ (8) Sitonit Mesh Back Chairs •
- (10) Cherry L-Shaped Secretarial Desks •
- Cherry Credenzas, Bookcases, File & Storage Cabinets •
- ★ (6) Trendway 2 & 3 Station Electrified Cubicles ★
- (35) Executive & Secretarial Chairs •
- (3) Ass't Arm, Side & Stack Chairs •
- (12) 2 & 4D Steel Lateral File Cabinets •
- Office Tables • Uline Shelving •
- (18) Mesh Window Shades, 4'-12' • Etc. • Etc •

**OFFICE MACHINES**

- 2019 Canon Imagerunner Advance Copier #5251F •
- HP LaserJet Managed MFP-E62655 All-In-One •
- HP LaserJet Pro MFP-M148DW All-In-One •
- HP M402DN Laser Printer • Brother HL-3170DW Laser Printer •
- (10) HP LaserJet Printers, P1109W & P1102W Printers •
- (12) Samsung Monitors • (15) Yealink Telephone Handsets •
- Wolverine SD-9520 Paper Shredder •
- ★ Sharp 41" HDTV ★
- Frigidaire 2D Refrigerator/Freezer •
- HB Microwave • Keurig Coffee Brewer • Etc. • Etc. •



TRENDWAY OFFICE CUBICLE



TRENDWAY OFFICE CUBICLES

**INSPECTIONS:** NEW JERSEY (ALL LOCATIONS)  
TUESDAY, OCTOBER 18<sup>TH</sup> - 10:00 A.M. TO 4:00 P.M.  
& MORNING OF SALES - 8:30 A.M. TO 10:30 A.M.

**Aaron Posnik**  
**AUCTIONEERS • APPRAISERS**



**• DAY 3 • WEDNESDAY, OCTOBER 26<sup>TH</sup> STARTING 10:30 A.M. (ET)  
LIVE ONSITE AND LIVE WEBCAST BIDDING  
9710 NW 110TH AVENUE, STE 14 MEDLEY (MIAMI), FLORIDA •**

**DISPOSABLE HYGIENE, LLC  
ANTHEM SOUTH, LLC**



TO BE SOLD ON THE PREMISES AND BY LIVE INTERNET BIDDING  
ON THE FOLLOWING DATES, TIMES AND LOCATIONS

DATE	TIME	ADDRESS	CITY	ST
WED. OCTOBER 26 <sup>TH</sup>	10:30 A.M.	9710 NW 110TH AVENUE, STE 14	MEDLEY, (MIAMI)	FL
WED. OCTOBER 26 <sup>TH</sup>	5:00 P.M.	11210 NW 91ST STREET	MEDLEY, (MIAMI)	FL

**INSPECTIONS: FLORIDA (BOTH LOCATIONS) – TUESDAY, OCTOBER 25TH – 10:00 A.M. TO 4:00 P.M.  
& MORNING OF SALES – 8:30 A.M. TO 10:30 A.M.**

**AIRPORT:**

**MIAMI INTERNATIONAL AIRPORT (MIA) – 2100 NW 42ND AVE., MIAMI, FL  
APPROX. 22 MINUTES TO SITE**

**DIRECTIONS TO 9710 NW 110TH AVENUE, MEDLEY (MIAMI):**

**FROM MIAMI INTERNATIONAL AIRPORT – HEAD TOWARD NW 21ST. TURN SLIGHTLY RIGHT ONTO NW 21ST. TAKE LEFT RAMP. TURN LEFT ONTO W SERVICE RD TOWARD AIRPORT EXIT. TURN RIGHT ONTO NW 20TH ST TOWARD AIRPORT EXIT. KEEP RIGHT TOWARD MIAMI CIR. CONTINUE ON MIAMI CIR. TAKE LEFT RAMP TOWARD AIRPORT EXIT/RENTAL CAR CENTER. TAKE RAMP ONTO SR-836-TOLL (DOLPHIN EXPY) TOWARD SR-953/S. LEJEUNE/SR-836 W. APPROX. 6.6 MI., THEN APPROX. 6.63 MILES. TAKE THE EXIT TOWARD FLORIDA'S TURNPIKE/SR-985 S/NW 107TH AVE/FLORIDA'S TURNPIKE NORTH/FT LAUDERDALE/ORLANDO ONTO SR-821 (FLORIDA'S TPKE). APPROX FOR 7.7 MI., THEN APPROX. 7.71 MILES, TAKE EXIT 34 TOWARD NW 106TH ST/FLAGLER STA BLVD ONTO NW 106TH ST. TURN RIGHT ONTO NW 112TH AVE. TURN LEFT ONTO NW 103RD ST. TURN RIGHT ONTO NW 110TH AVE. (WATCH FOR AUCTION SIGNS)**

**HOTELS:**

**HAMPTON INN – 11600 NW 41ST STREET, MIAMI, FL, 1-(305) 500-9300  
HOLIDAY INN EXPRESS – 8436 NW 36TH STREET, MIAMI, FL, 1-(844) 212-4984  
QUALITY INN – 3959 NW 79TH STREET, MIAMI, FL, 1-(786) 533-3636**

**TERMS & CONDITIONS:**

**EVERYTHING SOLD “AS IS/WHERE IS”**

**TERMS OF SALE:**

25% DEPOSIT BY CASH, CERTIFIED OR BANK CHECK, OR BANK WIRE TRANSFER. 15% BUYERS PREMIUM APPLIES ON ALL ONSITE PURCHASES. 18% BUYERS PREMIUM APPLIES ON ALL ONLINE PURCHASES. PERSONAL OR COMPANY CHECK ACCEPTED ONLY IF ACCOMPANIED WITH A BANK LETTER GUARANTEEING PAYMENT. EXAMPLE OF BANK LETTER OF GUARANTEE: THIS BANK GUARANTEES PAYMENT TO AARON POSNIK & CO., INC. ON ACCOUNT # \_\_\_\_\_ UP TO THE AMOUNT OF \$ \_\_\_\_\_ FOR PURCHASES MADE AT THE DISPOSAL HYGIENE, LLC/ANTHEM SOUTH LLC, D/B/A ANTHEM AUCTION TO BE HELD ON WEDNESDAY, OCTOBER 26<sup>TH</sup>. NO PURCHASE REMOVED UNTIL COMPLETE SETTLEMENT IS MADE. OTHER TERMS TO BE ANNOUNCED AT TIME OF SALE.

**SALES TAX:**

FLORIDA SALES TAX LAWS APPLY.  
DEALERS BRING COPY OF EXEMPT CERTIFICATE

**BID LIVE BY PHONE:**

CALL US BY **MONDAY, OCTOBER 24<sup>TH</sup>** TO SET UP THE DETAILS.

**BID LIVE BY INTERNET:**

VISIT OUR WEBSITE AT POSNIK.COM OR BIDSPOTTER.COM FOR INSTRUCTIONS ON BIDDING ONLINE.

**BID BY MAIL:**

IF YOU CANNOT ATTEND THIS AUCTION IN PERSON WE WILL BE HAPPY TO RECEIVE YOUR BID ON THE ITEMS THAT YOU DESIGNATE. IF YOUR BID IS SENT BY MAIL, FAX OR EMAIL AND RECEIVED BY OUR OFFICE AT LEAST 24 HOURS PRIOR TO THE COMMENCEMENT OF THE SALE. IF YOU WISH TO BID BY MAIL, KINDLY PROVIDE A COMPLETE LIST OF THE ITEMS DESIRED AND ENCLOSE A 25% DEPOSIT BY CERTIFIED CHECK. YOU WILL BE RESPONSIBLE FOR PURCHASES IF YOU ARE THE HIGH BIDDER, UNDER THE TERMS AND CONDITIONS TO BE ANNOUNCED AT TIME OF SALE. IF YOU ARE THE SUCCESSFUL BIDDER, WE WILL NOTIFY YOU WITHIN 24 HOURS OF THE SALE AND YOU MUST MAKE PAYMENT OF THE BALANCE DUE BY WIRE TRANSFER TO OUR BANK WITHIN 24 HOURS OF NOTIFICATION. IF YOU ARE UNSUCCESSFUL IN YOUR BID, YOUR DEPOSIT WILL BE RETURNED TO YOU WITHIN 72 HOURS OF THE SALE.

THE INFORMATION DESCRIBED IN THIS BROCHURE IS CORRECT TO THE BEST OF OUR KNOWLEDGE BUT WE CANNOT GUARANTEE SAME. IT IS FOR THIS REASON THAT BUYERS SHOULD AVAIL THEMSELVES OF THE OPPORTUNITY FOR INSPECTION PRIOR TO THE SALE.

PAUL W. SCHEER, FL LIC. # AU-02002304 - FIRM LIC. # AB-001697



2015 ELSNER ENR-1000 NONWOVENS PERFORATOR ROLLER WIPES REWINDER



2016 SHEMESH XPANDER CANISTER LINE



2020 WEIPAI VIROO VDP-400 FACIAL MASK MAKER & PACKER



2020 WEIPAI VIROO VDP-200 FACIAL MASK FILLER-SEALER

**Aaron Posnik**  
AUCTIONEERS • APPRAISERS

15% BUYERS PREMIUM APPLIES ON ALL ONSITE PURCHASES  
18% BUYERS PREMIUM APPLIES ON ALL ONLINE PURCHASES

**WET WIPES PRODUCTION LINES**

- ★ **2020 Kansan Auto Wet Wipes Converting Machine, Mod. Quickstack 12, S/N 268,** w/ **85T** Guide Controllers, **Omron** Touch Screen Controls, **Teos Plus** Control Panel
  - 1,000 Liter S.S. Tank, w/ Mixer & (2) Hydraulic Pumps
  - **2020 Kansan Dynamic Plus** Auto. Flow Wrapper, Mod. Acurapack 140, S/N 294, w/ Unwinder, (2) **Eti-Pak Energy 100** Labeler Stations, **Omron** Touch Screen Controls & **Electra** 70 KVA Transformer ★
  
- ★ **2014 PCM Marlin Flex Cross Fold Converter, Mod. NG4154195, S/N P101-0062,** AB 1500P Touch Controls, ECR 500 Dig. Web Guide Controller, AV 1500 Unwind; Web Tension Transducer; Splicer Detector; (2) Unwinder Spindles/Payoffs;
  - **Marlin** Flex Drive & Power Panel; Eaton Control Panel Transformer 3KVA, Pump, 8' S.S. Take-A-Way Conveyor • Etc. •
  - 2017 PFM** Cross Fold Flow Bagger, Mod. Scirocco BB, S/N D3663, w/ (2) 8' S.S. Conveyors; (3) Guide Sensors, • **PFM** Unwinder/Labeler; (2) **Markem** Barcode Printers; (2) **Eti-Pak 100** Labelers; Touch Screen Controls;
    - **PFM** S.S. Flipper •
    - **PFM** Cross Lid Applicator, Mod. Robot 1RB-360BB, S/N 713917 •
    - (2) **Eti-Pak Energy 100** Labeler • **Nordson Pro Blue 10** Gluer •
    - 500 Liter S.S Vat, w/ Dynamix Mixer ★
  
- ★ **2013 Teknoweb Wet Wipe Flat Converter, Mod. NEXT 12, S/N 10162,**
  - **2-Station Fife PM505** Positioners •
  - (2) **Teknoweb** Unwind Stations; Fire Polaris Web Guide Control & Offset Pivot Guider •
  - **PFM** Flat Flow Bagger, Mod. Scicorro, S/N 08813 w/ **AB** Touch Screen Controls, Web Guide Controllers, 6' Motorized Conveyor •
  - **PFM** Flipper, 3 Ph., S/N 088113 •
  - **2013 PFM** Flat Lid Applicator w/ **ABB** Flexpicker, Mod. Robot IRB360, S/N 086312 •
  - **Eti-Pak** Labeler "Original 13" • **Nordson Pro Blue 10** Gluer •
  - **Lock Insight** Metal Detector, w/ Conveyor •
  - 1,000 Liter S.S. Vat Tank, w/ Dynamix Mixer ★



**WET WIPES MACHINES**

- (2) **2020 Trakya Makine** Port. Single Wet Wipes Machines, S/N 00412 & 00413, w/ **Siemens Simatic HM1** Touch Screen Controls, 4'x9" Motorized Belt Conveyors & Fabric Unwinders •
- **2016 Imanpack** Vertical Auto Wet Wipes Roll Packaging Mach., Mod. MICROVENT M100 POLY, S/N A2445, w/ 10' Tower Incline Feed Conveyor •



**TEKNOWEB WET WIPES PRODUCTION LINE**

**Aaron Posnik**  
AUCTIONEERS • APPRAISERS

**FACIAL MASK PRODUCTION LINE**

- 2018 Zhengzhou Z-Link Fully Automatic Facial Mask Production Line, Mod. FM-100, S/N ZL2017U509-01, w/ 5' & 10' Motorized Outfeed Conveyors
- Wenzhou Kai-Chi Quantative Filling Machine, Mod. 100 w/ 1,250 Liter S.S. Mixing Tank, Yonjia Zhengda Mixer, 1 H.P., 3 Ph.
- 5 1/2'x4' S.S. Platform
- 2020 Linx Inkjet Coder Printer, Mod. Linx 103L2P, S/N K0797

**FACIAL MASK MACHINES**

- 2020 Weipai Viroo VPD-400 Fully Auto. Skincare Facial Mask Making & Packing Machine, S/N 20200089, w/ 4' Belt Conveyor, 3 Ph. •
- 2020 Weipai Viroo VPD-200 Cosmetic Face Mask & Facial Sheet Filling & Packing Machine, S/N 2204, Touch Screen Controls & 4' Belt Conveyor, 3 Ph. •

**NON WOVENS PERFORATOR REWINDER**

- 2015 Elsner ENR 1000 Automatic Non Wovens Perforator Roller Wipes Rewinder, S/N 3900-085, w/ U.S. 1220D Unwind, S/N 39000-88 & Nordsen Vista Gluer, Mod. 3100V Hot Melt Adhesive Applicator System •

**CANISTER LINE**

- 2016 Shemesh Automation Xpander Canister Line, Lid Applicator Elevator 6'x9', (4) S.S. Log, 2-6' Infeed Conveyors, S.S. Liquid Inlet & Outlet Container, 300 Liter S.S. Mixing Tank, Touch Screen Panel Controls •

**LID APPLICATING MACHINE**

- 2017 Kansan DP Dynamics Plus Robotic Plastic Lid Applying Mach., Lidmaster Pro Mod. 2017, S/N 109, w/ Staubu TP8 Fast Picker Robot Cap Distributor, w/ (2) Novexx #ALS104 Labelers, 3 Ph. •

**LABELERS**

- 2021 CVC Gallon Wrap Labeler, Mod. CVC310-U, S/N 11003051 •
- Label Mate Reel To Reel Rewinder RRR-330 •

**FILLER**

- Simplex Single Piston Filler, 1 Ph., Mod. AS-1, S/N 9137, w/ ADJ Freq. Drive •

**CASE SEALERS**

- (7) Eastey Port. Case Sealers, SB-2EXN w/ SQ/2 Squid Inkjet Systems •
- (4) 3M-Matic Case Sealers, w/ SQ/2 Squid Inkjet Systems •
- (3) Interpak Case Sealers, w/ SQ/2 Squid Inkjet Systems •

**INKJET PRINTERS**

- (2) Keyence Continuous MK-U Series Inkjet Printers •
- (4) Hitachi Inkjet, RX2-B & PB260W Inkjet Printers •
- (2) Markem Image #9064 Inkjet Printers •
- (2) Videojet Barcode Labeler/Printers, VJ9550 •



**2018 Z-LINK FACIAL MASK PRODUCTION LINE**



**PCM MARLIN WET WIPES PRODUCTION LINE**



**2020 KANSAN WET WIPES PRODUCTION LINE**

# • DAY 3 • WEDNESDAY, OCTOBER 26<sup>TH</sup> STARTING AT 10:30 A.M.

## CLEAN IN PLACE (CIP) SYSTEMS

- **2021 Fully Auto. CIP System Including:**
  - (1) Grau S.S. Mixing Tank, 8,000 Liters, Mod. RM1940
  - (2) Grau S.S. Tanks, 8,000 Liters, Mod. RM1940
  - Alfa Laval Pumps & S.S. hopper Line Feeder
- **2020 CIP System Including:**
  - (1) Grau S.S. Mixing Tank, 8,000 Liter, Mod. RM1940
  - (2) Grau S.S. Tanks, 8,000 Liters, Mod. RM1940, w/ S.S. hopper Line Feeder, Diaphragm Pump & (2) Alfa Laval Pumps
- **2020 CIP Port. System Including:**
  - Grau 388 Liter S.S. Tank RM700 w/ Alfa Laval Pump
- **2013 CIP Automatic Sanitation System Including:**
  - Grau 3,000 Liter S.S. Recovery Water Tank
  - Grau 2,407 Liter S.S. Detergent Tank
  - Grau 200 Liter S.S. Sanitation Tank, w/ Pumps, Heat Exchanger & Touch Screen Controls
- **2021 Automatic CIP System Including:**
  - (3) Grau Recovery, Detergent & Sanitizing Tanks, (595, 445 & 140 Liters), w/ Alfa Laval Pump & Burket Touch Screen Controls •



## MIXERS

- **Ailusi Triple Tank S.S. Vacuum Emulsifying Machine, 200, 300 & 500 Liter Mixing Tanks, Mod. AVE-500L, w/ Operator Control Interface & 12'x6' Platform, w/ Staircase & Hand Rails •**
- **2020 Ailusi Port. Cosmetic Face Cream Emulsifying Homogenous Mixer, Mod. ALS, S/N AVE-50L & Delta Touch Screen Controls •**

## CLEAN IN PLACE (CIP) SYSTEMS

## LAB EQUIPMENT

- (2) **Neogen Soleris Next Generation Rapid Microbial Testing Systems #SNG-INS32 •**
  - **NeoGen Sanitation Verifier #9904 •**
  - **LaBonco Logic+ Purifier Bio Safety Cabinet •**
  - **VWR 2-Door Incubator #11556 •**
  - **VWR 1-Door Incubator #1.GRCON4FC •**
  - (2) **Binder 1-Door Incubator (2014) •**
  - **Perkin Elmer Spectrometer "Frontier" FT-1R •**
- **Panasonic MLS-3751L Compact Top Loading Autoclave •**
- (3) **Haug Pack-Vac Leak Detectors, PVCA-18-1210 •**
- **Haug Pack-Vac Leak Detector, PVCA-201413 •**
- (2) **Mettler Toledo T7 Tritrator w/ (2) Dosing Units •**
  - **Vanguard Microscope 1220CM**
- ★ **SCI-Cool 2D Lab Refrig./Freezer, Mod. LAB-R ★**
- **Kitmar 2D S.S. Refrig., Mod. FCB49R, (2020) •**
- (25) **O'Haus Scales • PH Meters • Ass't. Mixers •**
- **Hot Plate Stirrers, Thermometers, Flasks, Beakers Pipettes, Electrodes, Jars, Tubes, Measuring Cylinders**
- (50) **S.S. Sanitizing Pails • Brew Kettle S.S. Stock Pots •**
  - **Lab Tables & Chairs • Etc. • Etc.**



## COMPRESSORS

- (2) **Ingersoll Rand Rotary Screw Air Compressors, Mod. R37iE-A-125, 50 H.P. 217CFM, 460V, S/N's VL1337U14020, (13,600 Hrs.), VL1336u1414020, (13,492 Hrs.) •**
- **Ingersoll Rand NVC400 Compressed Air Dryer, 400CFM, 460V, 3 Ph. •**
- **Ingersoll Rand Poly-SEP Condensate Separator, Mod. PSG-60 •**
- **2013 Steel Fab Vert. Air Tank, 1,500-Gal.**

## BOILER

- **2014 Hurst Boiler, Mod. 4VT-G-60-150, Gas Fired, 120V, 5 AMP, w/ Power Flame Burner, Hurst Horiz. Water Tank Feeder w/ (2) Gould Multi-Stage Pumps •**

## BLENDED/WEIGHING SYSTEM

- 2013 Blending System Including:
  - (2) **2013 Grau S.S. Mixing Tanks, 7,000 Liter •**
  - (2) **2013 Grau S.S. Mixing Tanks, 3,688 Liter •**
  - w/ **Nord 4 H.P., 3 Ph. Mixer Motors & A.B. Panel View Plus Touch Screen Controls, 18-Valve Sys. &**
  - (3) **Diaphragm S.S. Pumps.**

## MIXING TANK

- **2021 MDX Process 350-Gal. S.S. Mixing Tank, w/ MDX Mixer •**

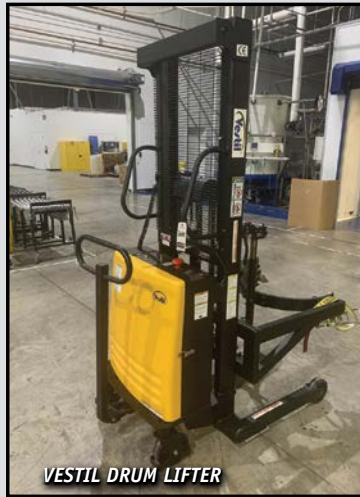


**Aaron Posnik**  
AUCTIONEERS • APPRAISERS

# (ET) 9710 NW 110<sup>TH</sup> AVE., STE 14 MEDLEY (MIAMI), FLORIDA



VESTIL STACKER



VESTIL DRUM LIFTER



RAYMOND REACH TRUCK



2021

2021 RAYMOND FORKLIFT & HYD. ROLL CLAMP

## FORKLIFTS

- 2021 Raymond Elec., 4,000# Cap., 188" Lift Ht., Triple Mast, ROPS, Solid Tires, Sideshifter, Mod. 4750C40S, S/N 475-21-13902 w/ Bolzani Auroma Paper Roll Clamp, (448 Hrs.) •
- 2018 Raymond Elec. Reach Truck, 3,000# Cap., 227" Lift Ht., ROPS, Solid Tires, Mod. 41S-18-5885, S/N 18-5885, (622 Hrs.) •

## PALLET WRAPPERS

- 2021 Lantech Q300 Stretch Wrapper, 48" Dia. Turntable, 120V, 1 Ph., S/N QMD054712 •
- 2020 Lantech Q300 Stretch Wrapper, 48" Dia. Turntable, 120V, 1 Ph., S/N QM0056417 •

## SUPPORT EQUIPMENT

- Miller Maystar 100 Tig Welder •
- Ryobi 1700 PSI Pressure Washer •
- Sunex 20-Ton Hyd. Shop Press •
- Transfer Pumps • Yaskawa Servo Motors & Drives •
- (20) Sections Metro Shelving • (25) Sections Steel Shelving •
- (12) Sections Pallet Racking, 8'x42"x18' •
- Uline Port. 24' Expandable Conveyors •
- Uline Flameproof Cabinets • Stock & Step Ladders •
- Tub, Ceiling & Wall Fans • Shop Vac's •
- Barrel & Machine Dollies • Service Jacks •
- Global & Uline S.S. Tables & Carts •
- Power Tools Including: Hammer Drills; Planers; Impact Wrenches; Grinders; Circular, Mitre, Jig & Chop Saws, Chainsaws • Socket Sets • Tap & Die Sets •
- Bench Grinder • Vises • Toolboxes •
- Air Hose & Ext. Cord Reels • Venair Pump Hose •
- Amano Timeclock • Shop Stools • Etc. • Etc. •

## LATE TYPE OFFICE EQUIPMENT

- Office Cubicles, Electrified, w/ Workstations •
- Ikea 14' Modular Conference Table w/ (12) High Back Exec. Chairs •
- (2) Ikea 9' Modular Conference Table w/ (8) High Back Exec. Chairs •
- 6' Oak Conference Table w/ (6) Exec. Chairs •
- 3' Dia. Conference Table w/ (4) Exec. Chairs •
- 5' Receptionist's Station • Exec. & Sec. Desks •
- (35) Ass't Exec. Chairs • (50) Stack Chairs •
- Office Tables • File Cabinets • (15) 6' 2D Storage Cabinets •
- Marking Boards • Etc. •
- ★ (2) Canon Imagerunner Advance 5251F Multi-Function Machines ★
- TCL 75" HDTV • Vizio 60" HDTV • Hiscense 50" HDTV •
- (2) LG Inverter Port. A/C Units •
- Upstream Mini Fridge •
- Frigidaire & Danby Undercounter Refrigerators •
- (2) Toshiba Microwave Ovens •
- Yababo Espresso Mach. • Etc. • Etc. •

## MATERIAL HANDLING EQUIPMENT

- Vestil Port. Elec. Drum Lifter, 800# Cap., 62" Lift Ht., Mod. Drum-LRT II •
- (2) Vestil Port. Elec. Drum Lifters, 550# Cap., 1600" Lift Ht., Mod. Drum LRT •
- (3) Vestil Port. Elec. Narrow Mast Stackers, 1,500# Cap., 98" Lift Ht., Mod. SLNM-98-AD •
- Presto Port. Hyd. Lift Stacker, 600# Cap., 22" Lift Ht., Mod. 478, (2017) •
- (2) Stacker Single Pole Elec. Lifts, 150KG Cap., 1500MM Lift Ht., Mod. E150A, (2020) •
- Stacker Port. Hyd. Lift Truck, 880# Cap., 59" Lift Ht. •
- Valley Craft Hyd. Drum Lifter Mod. F89747-B-0115 •
- Zenith Hyd. Scissor Lift Pallet Jack, 2,200# Cap. •
- (4) Ass't Hyd. Pallet Jacks, 5,000 & 5,500# Cap. •
- ★ Bolzani Auroma Hyd. Paper Roll Clamp, #AMC-2-165F ★
- ★ (2) O'Haus Defender Platform Scales, 500KVG Cap., 4x4 Platform ★

## CONVEYORS

- (4) Uline Best Flex 200 Expandable Skate Roller Conveyors •
- (25) Hytrol, Z-Line, PFM Motorized Belt Conveyors, 5'-16' •

## FLOOR MACHINE

- Tennant 5680 Walk-Behind Floor Scrubber, S/N 10732658, (254 Hrs.) w/ Delta Charger •

## MATERIALS

- Ass't Substrate • K.D. Cartons • Plastic Film •
- Gd. Qty. Bearings • Electrical Supplies •
- Machine Parts • S.S. Piping • Technomelt Adhesive •
- Labels • Fasteners • Etc. • Etc. •



2014

2014 HURST BOILER



2020

1 of 2

2020 LANTECH STRETCH WRAPPER Q300



(2) I.R. AIR COMPRESSORS

**Aaron Posnik**  
AUCTIONEERS • APPRAISERS

# • DAY 3 • WEDNESDAY, OCTOBER 26<sup>TH</sup> STARTING AT 5:00 P.M.



## 2021 KANSAN WET WIPES PRODUCTION LINE

### WET WIPES PRODUCTION LINES

- ★ **2021 Kansan Auto. Cross Fold Wet Wipes Converting Machine**, Mod. FLEXWORK 3, S/N 246 w/ (3) **Bst Eltromatic EKR-CON 100 Digital** Web Guide Controls & Touch Screen Monitor •
- ★ **2021 Kansan Dynamic Plus Acurapack 140 Automatic Flow Wrap Machine**, S/N 287, w/ **Teos-Plus** Interface Control Panel, w/ Unwinder & (2) **Novexx** Solutions Labelers #XLS204 W/ Touch Screen Controls,
  - **Endulas Krom 500KG S.S. Mixing Tank**,
  - **Electro Port. Isolation Transformer, 70KVA** •
- ★ **2014 Kansan Auto Wet Wipes Converting Mach.**, Mod. KNM-10-9600, S/N 118, w/ Touch Screen Controls •
- ★ **2014 Kansan DP Dynamics Plus Flow Wrap Machine**, Mod. DYN-WA-120, S/N 104, Touch Screen Controls w/ Unwinder & (2) **Avery Dennison Labelers, ALC204**
  - **Duzdas 500KG S.S. Mixing Tank** •

### CASE PACKERS

- **2017 Kansan Auto. Case Packer**, Mod. CASEMASTER WW, S/N 004 •
- **2013 Optima DDB Case Packer**, Mod. FNCAIX-O-TADELRA, S/N PR-330027-11-01 •

### SLEEVE APPLICATOR

- **2018 Shree Bhagwati Auto Shrink Sleeve Applicator**, Mod. SB-SLEEVEGO, S/N 2811-18, w/ (2) S.S. Heat Tunnels, w/ 2018 Easty 36" Dia. Turntable Tumbler, w/ Label-Aire 3015 Elec. Labeler, Borner 2100 Series Conveyor •

### MUD MASK MACHINES

- (2) **Guangzou Heyi** Port. Triple Step Mud Mask Machines •
- (2) **Guangzou Heyi** Port. Single Mud Mask Machines •
- **Guange** Port. 3-In-1 Face Mask Machine, Mod. GHY-2018-0115-2 •

### FILLERS & SEALERS

- (2) **Guange** Port. DIY Sachet Sealers, S/N DIY-1 & DIY-2 •
- **Guange** Port. Small Sachet Filler/Sealer •
- **Guange** 2-Step Nose Kit Filler/Sealer •
- **Guange** 2-Step Exe Kit Filler/Sealer •
- **GLF-2300** Port. Auto. Induction Aluminum Foil Sealing Mach •



2017 KANSAN CASE PACKER



FOIL SEALING MACHINE.



TRIPLE LANE FACE MASK MACHINE



SACHET MACHINE



2013 OPTIMA CASE PACKER



GUANGE SACHET SEALER



SINGLE MUD MASK MACHINE



ASS'T SUBSTRATE

**Aaron Posnik**  
AUCTIONEERS • APPRAISERS

# (ET) 11210 NW 91<sup>ST</sup> STREET MEDLEY (MIAMI), FLORIDA



## 2014 KANSAN WET WIPES PRODUCTION LINE

### PALLET RACKING

#### (138) Sections Pallet Racking:

- (72) Sections H.D. Teardrop Steel Pallet Racking 12'x42"x18' (6" Wide Cross Braces) & Wire Decking •
- (21) Sections H.D. Teardrop Steel Pallet Racking 12'x42"x18' (4" Wide Cross Braces) & Wire Decking •
- (45) Sections H.D. Teardrop Steel Pallet Racking 8' & 12'x42"x18' w/ Wire Decking •

### PALLET WRAPPER

- 2015 Lantech Stretch Wrapper, 1 Ph., 66" Dia. Turntable, Mod. Q300, S/N QM03278J •

### SUPPORT EQUIPMENT

- ★ Clean Air 12'x12'x8' Soft Wall Port. Hepa Clean Room ★
- Dewalt Vert. Air Compressor, 1 1/2 H.P., 1 Ph. •
- Excel Port. Shrink Tunnel, PP100626 •
- (2) Uline Port. Drum Fans •
- Uline 6'x5' Mag. Dock Plate •
- Label-Aire 3015 Elec. Labeler • Etc. • Etc. •

### FINISHED GOODS INVENTORY

- 106,000 Pkgs. Wipes Plus Disinfection Wipes, (60 Per Pkg.) •

### MATERIALS

- Gd. Qty: Substrate; Plastic Containers & Lids •
- Clear Arrow Labels • K.D. Cartons • Stretch Wrap •
- Technomelt • Nitrile Latex Gloves • Face Masks •
- Coveralls • Lab Coats • Bouffant Caps •
- Shoe Covers • Clear Tape • Paper Towels • Etc. • Etc. •



DISINFECTING WIPES INVENTORY  
(72) SECTIONS STEEL PALLET RACKING

### FORKLIFTS

- 2021 Raymond Elec. Forklift, 4,000# Cap., 241" Lift Ht., Sideshifter, ROPS, Solid Tires, Mod. 4750-C40S, S/N 475-21-14079, (1,418 Hrs.) •
- 2016 Raymond Elec. Forklift, 4,000# Cap., 188" Lift Ht., Sideshifter, ROPS, Solid Tires Mod. 4750-C40S, S/N 475-16-10237, (5,676 Hrs.) •
- ★ Bolzami Auroma Hyd. Paper Roll Clamp, #AMC-2-165F ★
- ★ (2) O'Haus Defender Platform Scales, 500KVG Cap., 4x4 Platform ★

### OFFICE MACHINES

- Canon Imageclass Color Laser All-In-One Office Mach. #MF743CDW •
- HP LaserJet Manager All-In-One #MFPE62655 •
- Yealink Conference Phone, Mod. CP920 •
- Owl Labs Video Conference Camera, Mod. MTW200 •
- Zebra Label Printer #Z-410 •
- ★ (2) Hiscencs 85" & 55" TV's w/ Wall Mounts ★
- Samsung 2D Refrig./Freezer •
- Home 1D Undercounter Refrig. •
- Toshiba Microwave • Oster Blender •
- Delonghi Espresso Mach. • Cappuccino Mach. • Etc. • Etc. •

### LATE TYPE OFFICE FURNISHINGS

- Ikea Conference Table w/ (12) Swivel Arm Chairs •
- Oak 8' Conference Table, w/ (8) Swivel Exec. Chairs •
- (3) Ikea 8' 4D Sideboards • (11) 5' Office Cubicles, Electrified •
- (3) NBF 6' Exec. Desks • (3) Ikea 5' Bekart Standing Desks •
- (40) Exec., Secretarial, Pull-Up & Stack Chairs •
- ★ Nicoletti Calia 3-Pc. 9'x9' Sectional Sofa ★
- Office Tables • Bookcases • File & Storage Cabinets •
- Planters • Marking Boards • Etc., Etc. •



IKEA CONFERENCE TABLE & CHAIRS



2021 RAYMOND FORKLIFT



2016 RAYMOND FORKLIFT W- CASCADE PAPER ROLL CLAMP

### BID FROM THE COMFORT OF YOUR OFFICE!!!

If you can't personally attend the auction sale, you don't have to miss out on the bidding. You can bid on the equipment in the following ways:  
 • LIVE PHONE BID: Call us by MONDAY, OCTOBER 24<sup>TH</sup> to set up the details\*  
 • INTERNET BID: Visit [www.posnik.com](http://www.posnik.com) or [bidspotter.com](http://bidspotter.com) to register online.\*  
 • PROXY BID: Call us and we'll be happy to fax you a proxy bid form. Fill it out, fax it back and we'll bid on your lot for you.\*  
 \*We must receive a 25% deposit of all proxy and phone bids before the auction to secure your bid. No credit cards.

To Bid Online Visit:  
[posnik.com](http://posnik.com) or [bidspotter.com](http://bidspotter.com)\*

Webcasts Powered by  
**BidSpotter.com**

TERMS OF SALE: 25% DEPOSIT CASH, WIRE TRANSFER OR CERTIFIED CHECK  
 15% BUYERS PREMIUM APPLIES ON ALL ONSITE PURCHASES  
 18% BUYERS PREMIUM APPLIES ON ALL ONLINE PURCHASES  
 OTHER TERMS TO BE ANNOUNCED AT TIME OF SALE  
 INSPECTIONS: FLORIDA (BOTH LOCATIONS)  
 TUESDAY, OCTOBER 25<sup>TH</sup> - 10:00 A.M. TO 4:00 P.M.  
 & MORNING OF SALES - 8:30 A.M. TO 10:30 A.M.

PAUL W. SCHEER, FL LIC. # AU-02002304  
 FIRM LIC. # AB-001697

**Aaron Posnik**  
 AUCTIONEERS • APPRAISERS

SECURED PARTY SALE BY

# PUBLIC AUCTION

LIVE ONSITE AND LIVE WEBCAST BIDDING

- 3 DAYS • 5 LOCATIONS •
- NEW JERSEY • FLORIDA •

**BEAUTY, SKINCARE & WIPES MANUFACTURER**

**(2) "STATE OF THE ART" MANUFACTURING FACILITIES**

- WET WIPE PRODUCTION LINES •
- BOTTLING & CANISTER LINES • CONVERTERS • BAGGERS •
- WRAPPERS • FILLING MACHINES • LABELERS • SEALERS •
- PACKAGING MACHINERY • S.S. TANKS & KETTLES • FORKLIFTS •
- LAB, SUPPORT & OFFICE EQUIPMENT •
- ±250,000.00 FINISHED GOODS INVENTORY •

DISPOSABLE HYGIENE, LLC  
ANTHEM SOUTH, LLC

DBA

**anthem**

TO BE SOLD ON THE PREMISES AND BY LIVE INTERNET BIDDING ON THE FOLLOWING DATES, TIMES AND LOCATIONS

DATE	TIME	ADDRESS	CITY	ST
WED. OCTOBER 19 <sup>TH</sup>	10:30 A.M.	60 PAGE ROAD	CLIFTON	NJ
THURS. OCTOBER 20 <sup>TH</sup>	10:30 A.M.	25 CONTINENTAL DRIVE	WAYNE	NJ
THURS. OCTOBER 20 <sup>TH</sup>	12:00 P.M.	1225 MCBRIDE AVENUE	WOODLAND PARK	NJ
WED. OCTOBER 26 <sup>TH</sup>	10:30 A.M.	9710 NW 110TH AVENUE, STE 14	MEDLEY, (MIAMI)	FL
WED. OCTOBER 26 <sup>TH</sup>	5:00 P.M.	11210 NW 91ST STREET	MEDLEY, (MIAMI)	FL

### SECURED PARTY SALE

**TERMS OF SALE:** 25% DEPOSIT CASH, WIRE TRANSFER OR CERTIFIED CHECK  
 15% BUYERS PREMIUM APPLIES ON ALL ONSITE PURCHASES  
 18% BUYERS PREMIUM APPLIES ON ALL ONLINE PURCHASES  
 OTHER TERMS TO BE ANNOUNCED AT TIME OF SALE

**INSPECTIONS:** NEW JERSEY (ALL LOCATIONS) – TUESDAY, OCTOBER 18<sup>TH</sup> – 10:00 A.M. TO 4:00 P.M.  
 & MORNING OF SALES – 8:30 A.M. TO 10:30 A.M.  
 FLORIDA (BOTH LOCATIONS) – TUESDAY, OCTOBER 25<sup>TH</sup> – 10:00 A.M. TO 4:00 P.M.  
 & MORNING OF SALES – 8:30 A.M. TO 10:30 A.M.

PAUL W. SCHEER  
FL LIC. # AU-02002304

**Aaron Posnik**

FIRM LIC. # AB-001697

**AUCTIONEERS • APPRAISERS**

Visit our Website @ [www.posnik.com](http://www.posnik.com)  
Toll Free 1-877-POSNIK-1 (767-6451)

Aaron Posnik & Co., Inc.  
31 Capital Drive • West Springfield, MA 01089  
(413) 733-5238 (Fax) 731-5946

Aaron Posnik & Co., Inc.  
P.O. Box 247 • Malvern, (Philadelphia) PA 19003  
(610) 853-6655 (Fax) 853-6633

Aaron Posnik & Co., Inc.  
31 Capital Drive  
West Springfield, MA 01089

Presorted  
First Class Mail  
U.S. POSTAGE  
PAID  
Permit No. 12  
Springfield, MA

RETURN SERVICE REQUESTED

**LIVE ONSITE & LIVE ONLINE  
BIDDING AVAILABLE**

MA Auc. Lic. #161  
PA Auc. Lic. #AY000241L  
Est. 1932

- 3 DAYS • 5 LOCATIONS •
- NEW JERSEY • WEDNESDAY, OCTOBER 19<sup>TH</sup> & THURSDAY, OCTOBER 20<sup>TH</sup> •
- MIAMI, FLORIDA • WEDNESDAY, OCTOBER 26<sup>TH</sup> •



### BID FROM THE COMFORT OF YOUR OFFICE!!!

If you can't personally attend the auction sale, you don't have to miss out on the bidding.

You can bid on the equipment in the following ways:

- LIVE PHONE BID: Call us by MONDAY, OCTOBER 17<sup>TH</sup> to set up the details\*
- INTERNET BID: Visit [www.posnik.com](http://www.posnik.com) or [bidspotter.com](http://bidspotter.com) to register online.\*
- PROXY BID: Call us and we'll be happy to fax you a proxy bid form. Fill it out, fax it back and we'll bid on your lot for you.\*

\*We must receive a 25% deposit of all proxy and phone bids before the auction to secure your bid. No credit cards.

Webcasts Powered by

To Bid Online Visit:  
[posnik.com](http://posnik.com) or [bidspotter.com](http://bidspotter.com)\*

**BidSpotter.com**

**Aaron Posnik**

**AUCTIONEERS • APPRAISERS**

Aaron Posnik & Co., Inc.  
31 Capital Drive • West Springfield, MA 01089  
(413) 733-5238 (Fax) 731-5946

MA Auc. Lic. #161 • Est. 1932 • PA Auc. Lic. #AY000241L  
Toll Free 1-877-POSNIK-1 (767-6451)

Aaron Posnik & Co., Inc.  
P.O. Box 247 • Malvern, (Philadelphia) PA 19003  
(610) 853-6655 (Fax) 853-6633