

# PUBLIC AUCTION

## • DEPARTMENT STORE •

• **±\$1,000,000.00 NATIONAL BRAND INVENTORY •**  
**NATIONAL DISCOUNT STORE LLC**  
**222 MAIN STREET NEW BRITAIN, CONNECTICUT**

**±\$1,000,000.00 INVENTORY**

- **National Brand Inventory Consisting of:**
- Sofas • Loveseats • End & Cocktail Tables •
- Entertainment Centers • Kitchen & Dining Room Sets •
- Bedroom Sets • Beds • Bunk Beds •
- Box Springs & Mattresses • Grandfathers Clock •
- Étagères • Baby Furniture • Etc. • Etc. •

**Clothing:**

- Men's, Women's & Children's Clothing Inventory (Large Qty. Case Goods) •
- Dungarees • Jeans • Khakis • Shorts • Jumpers •
- Sweaters • Windbreakers • Sweatshirts • T-Shirts •
- Baby & Toddler Clothing • High Heels • Pantyhose •
- Tights • Hats • Belts • Ties • Socks •
- Undergarments • Etc. • Etc. • Etc. •

**School Uniforms:**

- ±30,000 US Best & French Toast Children's Uniforms, Ass't Sizes & Colors, Boys & Girls Pants, Skirts, Sweaters, Polos, Shirts, Jumpers, Skorts, Vests, Capri Pants, Neckties • Etc. • Etc. •

**Inventory Includes:**

- Hardware • Tools • Bathroom & Laundry Supplies •
- Drapery & Curtains • Housewares • Paper Goods •
- Health & Beauty Aids • School Supplies • Crystal Items •
- Strollers • Cribs • Toys • Games • Dolls •
- Stuffed Animals • Giftware • Clocks • Knick Knacks •
- Figurines • Party Goods • Costume Jewelry •
- Sunglasses • Religious Items • Seasonal Merchandise •
- Etc. • Etc. • Many More Items Too Numerous To Mention •

**FIXTURES**

- Checkpoint Quicksilver Retail Store Anti-Theft System •
- Essix Surveillance System w/ (8) Cameras, Monitor & DVR •
- 30"x60" Paper Baler, 5 H.P., 3 Ph. • Cash Register • Anti-Theft Mirrors •
- (2) Coca Cola Vending Machines • (75) Shopping Baskets •
- (200) Ass't Port. Wire Stock Racks •
- (700) Ass't Wood Dump & Display Tables •
- Wire Dump Bins • Mannequins • Display Forms • Showcases •
- Gd. Qty. Chrome Gridwall, Wires Baskets, Peg Hooks •
- Chrome Clothing Racks • Gondola Shelving • Etc. • Etc. •

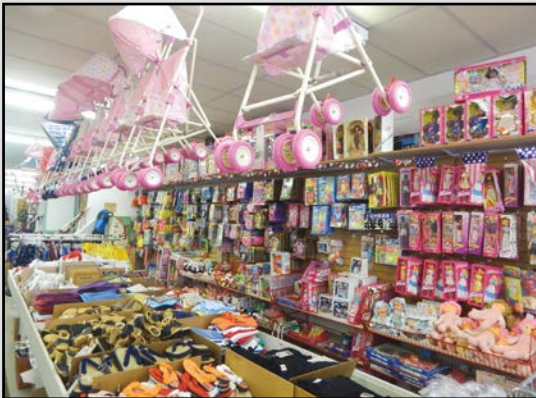
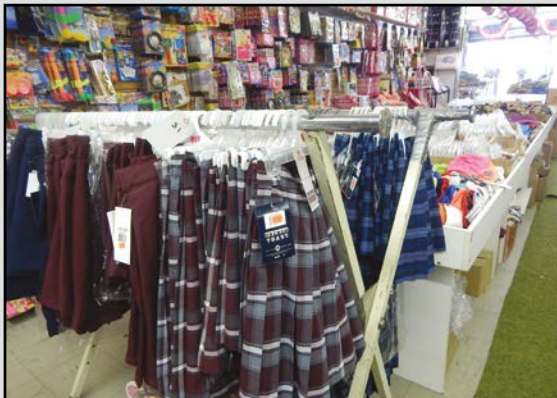
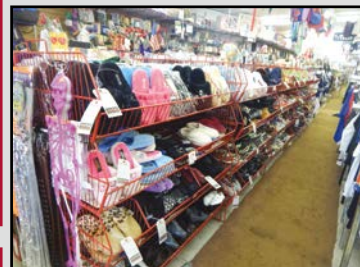
**BID FROM THE COMFORT OF YOUR OFFICE!!!**

If you can't personally attend the auction sale, you don't have to miss out on the bidding. You can bid on the equipment in the following ways:

- **LIVE PHONE BID:** Call us by **MONDAY, NOVEMBER 13<sup>TH</sup>** to set up the details\*
  - **INTERNET BID:** Visit [posnik.com](http://posnik.com) or [bidspotter.com](http://bidspotter.com) to register online.\*
  - **PROXY BID:** Call us and we'll be happy to fax you a proxy bid form. Fill it out, fax it back and we'll bid on your lot for you.\*
- \* We must receive a 25% deposit of all proxy and phone bids before the auction to secure your bid. No credit cards.

To Bid Online Visit  
[www.posnik.com](http://www.posnik.com) or  
[www.bidspotter.com](http://www.bidspotter.com)

Webcasts Powered by  

# • ATTEND • BUY • SAVE •

Visit our Website @ [www.posnik.com](http://www.posnik.com)

**Aaron Posnik**

**AUCTIONEERS • APPRAISERS**



LIQUIDATION SALE BY

# PUBLIC AUCTION

## 2 DAYS

### DEPARTMENT STORE

- ±\$1,000,000.00 NATIONAL BRAND INVENTORY •
- MENS, WOMENS & CHILDRENS CLOTHING •
- ±30,000 BOYS & GIRLS SCHOOL UNIFORMS •
- FURNITURE • HOUSEWARES • TOOLS • HARDWARE •
- GIFTWARE • TOYS & GAMES • HEALTH & BEAUTY AIDS •
- FIXTURES • EQUIPMENT •

### REAL ESTATE

5 STORY ±55,000 S/F RETAIL STORE/WAREHOUSE  
 ★ LOCATED IN CENTRAL BUSINESS DISTRICT ★

NATIONAL DISCOUNT STORE, LLC  
 222 MAIN STREET NEW BRITAIN, CONNECTICUT

TO BE SOLD ON THE PREMISES AND BY LIVE INTERNET BIDDING

TUESDAY & WEDNESDAY, NOVEMBER 14<sup>TH</sup> & 15<sup>TH</sup>  
 STARTING EACH DAY AT 10:30 A.M.

SALE BY ORDER OF OWNER

**TERMS OF SALE:**

**REAL ESTATE:** \$25,000.00 DEPOSIT CASH OR BANK CERTIFIED CHECK  
 7% BUYERS PREMIUM APPLIES

**PERSONAL PROPERTY:** 25% DEPOSIT CASH OR CERTIFIED CHECK  
 15% BUYERS PREMIUM APPLIES ON ALL ONSITE PURCHASES  
 18% BUYERS PREMIUM APPLIES ON ALL ONLINE PURCHASES

OTHER TERMS TO BE ANNOUNCED AT TIME OF SALE

**INSPECTION:** MORNINGS OF SALE – 8:30 A.M. TO 10:30 A.M.  
 REAL ESTATE: UPON REQUEST

IN CONJUNCTION WITH DAVID L. LARSON, REB0387497

## Aaron Posnik

**AUCTIONEERS • APPRAISERS**

MA Auc. Lic. #161  
 PA Auc. Lic. #AY000241L  
 Est. 1932

Visit our Website @ [www.posnik.com](http://www.posnik.com)  
 Toll Free 1-877-POSNIK-1 (767-6451)

Aaron Posnik & Co., Inc.  
 31 Capital Drive • West Springfield, MA 01089  
 (413) 733-5238 (Fax) 731-5946

Aaron Posnik & Co., Inc.  
 31 Capital Drive  
 West Springfield, MA 01089

Presorted  
 First Class Mail  
 U.S. POSTAGE  
 PAID  
 Permit No. 12  
 Springfield, MA

RETURN SERVICE REQUESTED

**LIVE ONSITE & LIVE INTERNET  
 BIDDING AVAILABLE**

# TUESDAY & WEDNESDAY, NOVEMBER 14<sup>TH</sup> & 15<sup>TH</sup> STARTING EACH DAY AT 10:30 A.M. 222 MAIN STREET NEW BRITAIN, CONNECTICUT



**REAL ESTATE • TUESDAY, NOV. 14<sup>TH</sup> AT 10:30 A.M.  
 5 STORY  
 ±55,000 S/F RETAIL STORE/WAREHOUSE  
 "LOCATED IN CENTRAL BUSINESS DISTRICT"**

**LAND:**

- ±1/4 Acre of Land • Paved Parking for ±10 Vehicles (Rear) •
- ±55/ Frontage on Main Street • City Water & Sewer •
- Zoned: B4 – Central Business District •

**IMPROVEMENTS:**

- 5 Story Retail Store/Warehouse Building • ±55,000 S/F of Building Area •
- Additional ±12,000 S/F Basement Warehouse Area •
- Gas FWA & Hot Water Baseboard Heat • (2) Furnaces • Brick Exterior •
- Flat Roof • Concrete & Hardwood Floors • (5) Bathrooms (One on Each Floor) •
- Office • Elevator • 100% Sprinklered • Loading Dock •

**DIRECTIONS:**

**FROM HARTFORD, CT:** TAKE I-84 W/US-6 TOWARD WATERBURY. MERGE ONTO CT-9 S VIA EXT 39A TOWARD NEWINGTON/NEW BRITAIN. APPROX. 4.62 MILES. TAKE EXIT 28A TOWARD DOWNTOWN NEW BRITAIN. APPROX. 0.51 MILES. TURN RIGHT ONTO E MAIN ST/CT-174. CONTINUE TO FOLLOW E MAIN ST. APPROX 0.32 MILES. TURN LEFT ONTO MAIN ST. APPROX. 0.18 MILES. TAKE THE 2ND RIGHT ONTO W MAIN ST. APPROX 0.04 MILE. TAKE THE 1ST LEFT ONTO MAIN ST. 222 MAIN STREET IS ON THE RIGHT. (WATCH FOR AUCTION SIGNS)

**FROM NEW HAVEN, CT:** TAKE I-91 N TOWARD HARTFORD. MERGE ONTO CT-15 N VIA ET 17 TOWARD BERLIN TPKE/CT-66. APPROX. 7.69 MILES. TAKE THE CT-372 N/CT-372 EXIT TOWARD CT-9 N/NEW BRITAIN/EAST BERLIN. APPROX. 0.17 MILES. TURN SLIGHT RIGHT ONTO MILL ST/CT-372. APPROX. 0.14 MILES. STAY STRAIGHT TO GO ONTO FRONTAGE RD. APPROX. 0.11 MILES. MERGE ONTO CT-9 N VIA THE RAMP ON THE LEFT TOWARD NEW BRITAIN. APPROX. 3.01 MILES. TAKE EXIT 26 TOWARD DOWNTOWN NEW BRITAIN. APPROX. 0.35 MILES. MERGE ONTO COLUMBUS BLVD. MILES. APPROX. 0.43 MILES. TURN LEFT ONTO MAIN ST. APPROX. 0.06 MILES. TAKE THE 1ST RIGHT ONTO W MAIN ST. APPROX. 0.04 MILES. TAKE THE 1ST LEFT ONTO MAIN ST. APPROX. 0.04 MILES. 222 MAIN STREET IS ON THE RIGHT. (WATCH FOR AUCTION SIGNS)

**SALE BY ORDER OF OWNER - STORE CLOSING**

**TERMS OF SALE:**

**REAL ESTATE:** \$25,000.00 DEPOSIT CASH OR BANK CERTIFIED CHECK  
 7% BUYERS PREMIUM APPLIES

OTHER TERMS TO BE ANNOUNCED AT TIME OF SALE

**INSPECTION:** MORNINGS OF SALE – 8:30 A.M. TO 10:30 A.M.

REAL ESTATE: UPON REQUEST

IN CONJUNCTION WITH DAVID L. LARSON, REB0387497

**1% BROKER INCENTIVE OFFERED!!!**

## Aaron Posnik

**AUCTIONEERS • APPRAISERS**

Aaron Posnik & Co., Inc.  
 31 Capital Drive • West Springfield, MA 01089  
 (413) 733-5238 (Fax) 731-5946

MA Auc. Lic. #161 • Est. 1932 • PA Auc. Lic. #AY000241L  
 Toll Free 1-877-POSNIK-1 (767-6451)

Aaron Posnik & Co., Inc.  
 P.O. Box 247 • Malvern, (Philadelphia) PA 19003  
 (610) 853-6655 (Fax) 853-6633