

WEDNESDAY, MAY 21ST AT 10:00 A.M.

REAL ESTATE • WAREHOUSE BUILDING - LAND

±4¾ ACRES OF LAND
±87,000 S/F INDUSTRIAL WAREHOUSE BUILDING



LAND

- ±4 ¾ Acres of Land • Paved Parking for ±60 Vehicles •
- Public Utilities: Water, Gas, Electric & Telephone •
- Zoned: General/Special Industrial & Urban Residential A •
- Parcel ID: 22B-109-001 • Title Reference: Volume 8967, Page 149

**2% BROKER
INCENTIVE
OFFERED!!!**

IMPROVEMENTS

- Single Story Industrial Warehouse Building •
- ±87,280 S/F of Gross Building Area w/ ±1,200 S/F Office Mezzanine •
- ±420 S/F of Shipping & Receiving Office Space • Gas Fired Radiant Heating Units •
- Newer 1,200 Amp Electrical Service w/ 800 Amp Sub Panel •
- Fully Sprinklered (Including Dock Area) • ±22' Ceiling Height w/ 25'x50' Bay Spacing •
- Steel Panel Exterior w/ Pitched Roof • Cement Floors • Insulated Exposed Wall & Truss Ceiling •
- 20'x14' Drive-In Door • (2) 8'x10' Overhead Dock Doors • Alarm System •
- Multi-Fixture Men's & Women's Restrooms •

TERMS OF SALE

REAL ESTATE: \$50,000.00 INITIAL DEPOSIT CASH OR BY BANK OR CERTIFIED CHECK
DEPOSIT MUST BE INCREASED TO 10% OF PURCHASE PRICE WITHIN 5 BUSINESS DAYS
5% BUYERS PREMIUM APPLIES

OTHER TERMS TO BE ANNOUNCED AT TIME OF SALE

INSPECTIONS: TUESDAY, MAY 20TH – 10:00 A.M. TO 4:00 P.M.
& MORNING OF SALE – 8:30 A.M. TO 10:00 A.M.
REAL ESTATE – INSPECTION UPON REQUEST

Aaron Posnik

AUCTIONEERS • APPRAISERS

MA Auc. Lic. #161 • Est. 1932 • PA Auc. Lic. #AY000241L

PUBLIC AUCTION

PRECISION METAL GOODS COMPANY

- METAL PROCESSOR & BALL GRAINING FACILITY •
- ±\$500,000.00 ALUMINUM COIL & SHEET STOCK •
- (3) CUT TO LENGTH LINES •
- METAL FABRICATING MACHINERY •
- MACHINE TOOLS • WOODWORKING MACHINES •
- (14) FORKLIFTS • TRUCKS • TRAILERS • LOADER •
- PLANT SUPPORT & OFFICE EQUIPMENT •

REAL ESTATE

- ±87,000 S/F INDUSTRIAL WAREHOUSE BUILDING •
- ±4¾ ACRES OF LAND •

INNOVATIVE DESIGN & DISPLAYS, INC.

D/B/A PRECISION METAL GOODS
AND NEW ENGLAND METAL PROCESSING
AND PRECISION BALL GRAINING

199 PINE STREET

FLORENCE (NORTHAMPTON), MASSACHUSETTS

TO BE SOLD ON THE PREMISES AND BY LIVE INTERNET BIDDING

WEDNESDAY, MAY 21ST AT 10:00 A.M.

SALE PER ORDER OF MORTGAGEE & SECURED PARTY

NORMAN J. GUZ, JR., ESQ.
OF THE FIRM OF MURPHY MCCOUBREY, 272 EXCHANGE STREET, CHICOPEE, MA
ATTORNEYS FOR MORTGAGEE & SECURED PARTY

TERMS OF SALE
PERSONAL PROPERTY: 25% DEPOSIT CASH OR CERTIFIED CHECK
10% BUYERS PREMIUM APPLIES ON ALL ONSITE PURCHASES
13% BUYERS PREMIUM APPLIES ON ALL INTERNET PURCHASES
REAL ESTATE: \$50,000.00 INITIAL DEPOSIT CASH OR BY BANK OR CERTIFIED CHECK
DEPOSIT MUST BE INCREASED TO 10% OF PURCHASE PRICE WITHIN 5 BUSINESS DAYS
5% BUYERS PREMIUM APPLIES

OTHER TERMS TO BE ANNOUNCED AT TIME OF SALE
INSPECTIONS: TUESDAY, MAY 20TH - 10:00 A.M. TO 4:00 P.M.
& MORNING OF SALE - 8:30 A.M. TO 10:00 A.M.
REAL ESTATE - INSPECTION UPON REQUEST

Aaron Posnik

AUCTIONEERS • APPRAISERS



MA Auc. Lic. #161
Est. 1932
PA Auc. Lic. #AY000241L

Visit our Website @ www.posnik.com

Aaron Posnik & Co., Inc.
83 State Street • Springfield, MA 01103
(413) 733-5238 (Fax) 731-5946

Aaron Posnik & Co., Inc.
83 State Street
Springfield, MA 01103

Presorted
First Class Mail
U.S. POSTAGE
PAID
Permit No. 12
Springfield, MA

RETURN SERVICE REQUESTED

**LIVE ONSITE & LIVE INTERNET
BIDDING AVAILABLE**

Aaron Posnik & Co., Inc.
P.O. Box 247 • Malvern, (Philadelphia) PA 19003
(610) 853-6655 (Fax) 583-6633

WEDNESDAY, MAY 21ST AT 10:00 A.M.
199 PINE STREET FLORENCE (NORTHAMPTON), MASSACHUSETTS



HERR VOSS STANCO 60" INVERTED LEVELER



IOWA CUT TO LENGTH LINE



MCS CUT TO LENGTH LINE



AMERICAN PAYOFF REEL - 10,000# CAP.



ALUMINUM SHEET STOCK (PARTIAL VIEW)

BID FROM THE COMFORT OF YOUR OFFICE!!!

If you can't personally attend the auction sale, you don't have to miss out on the bidding. You can bid on the equipment in the following ways:

- **LIVE PHONE BID:** Call us by **MONDAY, MAY 19TH** to set up the details*
 - **INTERNET BID:** Visit www.posnik.com or bidspotter.com to register online.*
 - **PROXY BID:** Call us and we'll be happy to fax you a proxy bid form. Fill it out, fax it back and we'll bid on your lot for you.*
- *We must receive a 25% deposit of all proxy and phone bids before the auction to secure your bid. No credit cards.

To Bid Online Visit www.posnik.com or www.bidspotter.com

Webcasts Powered by

BidSpotter.com

Aaron Posnik

AUCTIONEERS • APPRAISERS

Aaron Posnik & Co., Inc.
83 State Street • Springfield, MA 01103
(413) 733-5238 (Fax) 731-5946

MA Auc. Lic. #161 • Est. 1932 • PA Auc. Lic. #AY000241L

Aaron Posnik & Co., Inc.
P.O. Box 247 • Malvern, (Philadelphia) PA 19003
(610) 853-6655 (Fax) 583-6633

PUBLIC AUCTION

PRECISION METAL GOODS COMPANY

- METAL PROCESSOR & BALL GRAINING FACILITY •
 - ±\$500,000.00 ALUMINUM COIL & SHEET STOCK •
- (3) CUT TO LENGTH LINES • METAL FABRICATING MACHINERY •
 - MACHINE TOOLS • WOODWORKING MACHINES •
- (14) FORKLIFTS • TRUCKS • TRAILERS • LOADER •
 - PLANT SUPPORT & OFFICE EQUIPMENT •

REAL ESTATE

- ±87,000 S/F INDUSTRIAL WAREHOUSE BUILDING •
 - ±4¾ ACRES OF LAND •

INNOVATIVE DESIGN & DISPLAYS, INC.

D/B/A PRECISION METAL GOODS AND NEW ENGLAND METAL PROCESSING
AND PRECISION BALL GRAINING

199 PINE STREET FLORENCE (NORTHAMPTON), MASSACHUSETTS

TO BE SOLD ON THE PREMISES AND BY LIVE INTERNET BIDDING

WEDNESDAY, MAY 21ST AT 10:00 A.M.

INSPECTIONS: TUESDAY, MAY 20TH – 10:00 A.M. TO 4:00 P.M. & MORNING OF SALE – 8:30 A.M. TO 10:00 A.M.



HERR VOSS STANCO 60" INVERTED LEVELER



SHEAR & AUTO FEEDER



STRAIGHTENER/FEEDER STAND



UNWINDER



CONVEYOR SHEET STACKER

CINCINNATI HERR VOSS CUT TO LENGTH LINE

REBUILT 2010

Aaron Posnik

AUCTIONEERS • APPRAISERS

PUBLIC AUCTION

INNOVATIVE DESIGN & DISPLAYS, INC.

D/B/A PRECISION METAL GOODS
AND NEW ENGLAND METAL PROCESSING
AND PRECISION BALL GRAINING

199 PINE STREET

FLORENCE (NORTHAMPTON), MASSACHUSETTS

TO BE SOLD ON THE PREMISES AND BY LIVE INTERNET BIDDING

WEDNESDAY, MAY 21ST AT 10:00 A.M.

INSPECTION: TUESDAY, MAY 20TH - 10:00 A.M. TO 4:00 P.M.

& MORNING OF SALE - 8:30 A.M TO 10:00 A.M.

REAL ESTATE - INSPECTION UPON REQUEST

AIRPORT:

BRADLEY INTERNATIONAL AIRPORT (BDL) - APPROX. 41 MILES TO SITE
11 SCHOEPHOESTER ROAD, WINDSOR LOCKS, CT 1-860-292-2000

DIRECTIONS:

FROM BRADLEY INTERNATIONAL AIRPORT - TAKE I-91 N TOWARDS
SPRINGFIELD (CROSSING INTO MASSACHUSETTS). APPROX. 32.5 MILES.
TAKE THE US-5 N EXIT 18, TOWARD NORTHAMPTON CENTER/SMITH
COLLEGE. APPROX. .02 MILE. TURN LEFT ONTO MOUNT TOM RD/US-5
N. CONTINUE TO FOLLOW US-5 N. APPROX. 1.1 MILE. TURN LEFT ONTO
MAIN ST/MA-9/MA-10. CONTINUE TO FOLLOW MA-9. APPROX. 1.3 MILE.
TURN LEFT ONTO ELM ST. APPROX. 0.6 MILE. ELM ST BECOMES NONOTUCK
ST. APPROX. 1.0 MILE. TURN LEFT ONTO PINE ST. APPROX. .02 MILE. 199
PINE ST. IS ON THE RIGHT. (WATCH FOR AUCTION SIGNS).

HOTELS:

SHERATON BRADLEY HOTEL - 1-860-627-5311
BRADLEY INT'L AIRPORT, WINDSOR LOCKS, CT
HILTON GARDEN INN - 1-413-886-8000
800 HALL OF FAME AVENUE, SPRINGFIELD, MA
SHERATON - 1-413-781-1010
ONE MONARCH PLACE, SPRINGFIELD, MA

TERMS & CONDITIONS:

EVERYTHING SOLD "AS IS/WHERE IS"

TERMS OF SALE - PERSONAL PROPERTY:

25% DEPOSIT CASH OR CERTIFIED CHECK. 10% BUYERS PREMIUM
APPLIES ON ALL ONSITE PURCHASES. 13% BUYERS PREMIUM APPLIES
ON ALL INTERNET PURCHASES. PERSONAL OR COMPANY CHECK ACCEPTED
ONLY IF ACCOMPANIED WITH A BANK LETTER GUARANTEEING PAYMENT.
EXAMPLE OF BANK LETTER OF GUARANTEE: THIS BANK GUARANTEES
PAYMENT TO AARON POSNIK & CO., INC. ON ACCOUNT # _____ UP TO
THE AMOUNT OF \$ _____ FOR PURCHASES MADE AT THE INNOVATIVE
DESIGN & DISPLAYS, INC. AUCTION TO BE HELD ON WEDNESDAY, MAY
21ST. NO PURCHASE REMOVED UNTIL COMPLETE SETTLEMENT IS MADE.
OTHER TERMS TO BE ANNOUNCED AT TIME OF SALE.

TERMS OF SALE - REAL ESTATE:

\$50,000.00 INITIAL DEPOSIT CASH OR BY BANK OR CERTIFIED CHECK.
DEPOSIT MUST BE INCREASED TO 10% OF PURCHASE PRICE WITHIN 5
BUSINESS DAYS. 5% BUYERS PREMIUM APPLIES. OTHER TERMS TO BE
ANNOUNCED AT TIME OF SALE.

SALES TAX:

MASSACHUSETTS SALES TAX LAWS APPLY. DEALERS BRING COPY OF
EXEMPT CERTIFICATE.

BID LIVE BY PHONE:

CALL US BY MONDAY, MAY 19TH TO SET UP THE DETAILS.

BID LIVE BY INTERNET:

VISIT OUR WEBSITE AT POSNIK.COM OR BIDSPOTTER.COM FOR
INSTRUCTIONS ON BIDDING ONLINE.

BID BY MAIL:

IF YOU CANNOT ATTEND THIS AUCTION IN PERSON WE WILL BE HAPPY
TO RECEIVE YOUR BID ON THE ITEMS THAT YOU DESIGNATE (IF YOUR
BID IS SENT BY MAIL OR FAX AND RECEIVED BY OUR OFFICE AT LEAST
24 HOURS PRIOR TO THE COMMENCEMENT OF THE SALE). IF YOU WISH
TO BID BY MAIL, KINDLY PROVIDE A COMPLETE LIST OF THE ITEMS
DESIRED AND ENCLOSE A 25% DEPOSIT BY CERTIFIED CHECK. YOU
WILL BE RESPONSIBLE FOR PURCHASES IF YOU ARE THE HIGH BIDDER,
UNDER THE TERMS AND CONDITIONS TO BE ANNOUNCED AT TIME OF
SALE. IF YOU ARE THE SUCCESSFUL BIDDER, WE WILL NOTIFY YOU
WITHIN 24 HOURS OF THE SALE AND YOU MUST MAKE PAYMENT OF THE
BALANCE DUE BY WIRE TRANSFER TO OUR BANK WITHIN 24 HOURS OF
NOTIFICATION. IF YOU ARE UNSUCCESSFUL IN YOUR BID, YOUR DEPOSIT
WILL BE RETURNED TO YOU WITHIN 72 HOURS OF THE SALE.

IMPORTANT NOTICE:

THE INFORMATION DESCRIBED IN THIS BROCHURE IS CORRECT TO THE
BEST OF OUR KNOWLEDGE BUT WE CANNOT GUARANTEE SAME. IT IS
FOR THIS REASON THAT BUYERS SHOULD AVAIL THEMSELVES OF THE
OPPORTUNITY FOR INSPECTION PRIOR TO THE SALE.

10% BUYERS PREMIUM APPLIES ON ALL ONSITE PURCHASES
13% BUYERS PREMIUM APPLIES ON ALL INTERNET PURCHASES



TIMESAVER WIDE BELT SANDER



TIMESAVER SANDER



TANNEWITZ SANDER



BRADBURY MOD. 800 ROLL TIPPER



IOWA CUT TO LENGTH LINE



MCS CUT TO LENGTH LINE



AMERICAN PAYOFF REEL 10,000# CAP.



AMERICAN PAYOFF REEL 10,000# CAP.



BRADBURY STOCK REELS



RED BUDD STOCK REEL 60,000# CAP.



HERR VOSS 6' SHEAR



2007

REITNOUER 45' FLAT BED TRAILER

CUT TO LENGTH LINES

- Cincinnati Herr Voss Cut To Length Line Consisting Of:
 - Herr Voss Stanco Inverted Leveler Plus 60" Max. Width
 - Cincinnati Forte Unwinder, S/N CPR-1547
 - w/ Tension Overhead Arm
 - Straightener Feeder Stand
 - 9'x6' Hyd. Lift Table
 - Shear, Conveyor Sheet Stackers, Exit Conveyor & Controls (Rebuilt by Herr Voss 2010)
- Iowa Precision Shear/Cut To Length Line 48" Max. Width, Mod. SLR4818-1, S/N 69601, 18 GA. Max. Cap. Including: American Steel Payoff 1,000# Max. Cap., Mod. 1000, w/ Coil Lifter, Run Out Conveyor 7' x 4' Hyd. Lifting Table
- MCS 60" Cut to Length Line, 48" Max. Cap., (1991) Includes:
 - Franco Shear, 16 GA. Alum. Cap., S/N 509915798
 - Chartland Run Out Conveyor

LEVELERS

- Cincinnati 78" Flattener/Leveler S/N RL-1551
- Rowe 60" Leveler, .020-.085 Mild Steel Thickness, 3 Ph., M/N C60HD

STOCK REELS

- (2) Bradbury 60" Hyd. Unwind Stock Reels, 5 H.P., 3 Ph.
- Bradbury 48" Single End Auto Payoff Reel, 3 Ph., M/N SR10
- Bradbury 60" Single End Auto Payoff Reel, 3 Ph., M/N Recoiler
- American Steel 6' Single End Auto Payoff Reel, 10,000# Cap., 3 Ph., M/N 1000
- American Steel 22' Single End Auto Payoff Reel, 2,500# Cap., M/N 60
- Red Bud 6' Single End Auto Payoff Reel, 60,000# Cap., M/N RM30-72-6
- American Steel 5' Single End Auto Payoff Reel, 10,000# Cap., M/N 10000

HANDLING EQUIPMENT

- Bradbury 5' x 5' Hyd. Roll Tipper, Mod. 800
- 5' x 5' Pallet Tipper
- Contrax 16' x 9' Port. Gantry, 2 Ton Cap. w/ Coffing 2 Ton Elec. Hoist, & Anver 6 Pro Vac. Sheet Lifter, 450# Cap.
- 20' Free Standing Overhead Bridge Crane, 2,000# Cap.
- Autoquip 4' x 4' Hyd. Scissor Lift Table, 4,000# Cap.
- Bushman Sheet Lifter, 10 Ton Cap.
- Crane Sheet Lifter, 5 Ton Cap.
- Caldwell 5' Steel Lifting Fixture, 25 Ton Cap.
- Port. Hyd. Lift Tables

SHEARS

- Cincinnati 12' Hyd. 16 GA. 1/4" Mild Steel Cap., M/N 18, S/N 33371, w/ Back Gauge
- Herr Voss 6' Shear, 20 H.P., 3 Ph.
- Betenbender 72" x 12 GA. Cap. Shear w/ Back Gauge
- Wysong 52" Shear, 12 GA. Soft Steel Cap., 1 Ph., M/N 1252
- Wysong 6' Mech. Shear, 3 Ph., M/N 572

PRESS BRAKE

- Chicago 8' x 60-90 Ton Cap., 3 Ph., M/N 66L, S/N L-15294, w/ Herco Autobend 5C D.R.O. & Shadow Safety Curtain

PUNCH PRESS

- Heim 55 Ton, 3" Stroke, 13" Shut Ht., 18"x22" Bed, M/N 5-0B1F, w/ D.R.O.

SANDERS

- Timesavers 52" Wide Belt Sander, 3 Ph., M/N 211-45-0-RT, w/ E3000 Digital Controls, (2004)
- Timesavers Speedbelt 63" Wide Belt Sander, 100 H.P., 3 Ph., M/N TOP63, S/N 3537, w/ 10' Round Conveyor
- (2) Tannewitz 50" Wide Belt, 50 H.P., 3 Ph., M/N 150CT

LAMINATOR

- Walco 62", 1 Ph., M/N 80-C-1M-62, S/N 95-509-6862

MISCELLANEOUS MACHINERY

- Moore Jig Borer, 3 Ph., M/N 1 1/2B, S/N J832
- Whitney Jensen 8' Man Brake
- Gd. Qty. Press Brake Dies
- Wells 12" x 18" Horiz. Metal Bandsaw, 3 Ph., M/N W9
- Sheet Polisher 52", 40 H.P., 3 Ph.
- Solem 30" Planer, 3 Ph., M/N PB
- Onsrud Router, 7 1/2 H.P., 3 Ph., M/N 1124A
- (2) Delta 15" & 18" Drill Presses, 1 Ph.
- Table, Mitre & Chop Saws
- D.E. Bench & Pedestal Grinders & Etc. & Etc.

LATHES

- Victor Engine Lathe, 20" x 10' B.C., 12" Chuck, Tail Stock, Cross Slide, 3 Ph., S/N 714009 w/10" Roll Grinding Attach., 7 1/2 H.P., & Dust Collector
- South Bend Q.C. Gear Lathe, 16" x 48" B.C., 3 Ph., S/N 128286
- Logan Engine Lathe, 12" x 34" B.C., 3 Ph., M/N 2597, S/N 65667

COMPRESSORS

- Kaeser Rotary Screw, 60 H.P., 5 Ph., M/N SFC45, S/N 1028, (New 2006), w/ Sigma Digital Controls; Kaeser Air Dryer, 3 Ph., M/N TE91, (New 2007), Kaeser KCF100 Oil & Water Separator & Receiving Tank
- Kellogg American Horiz., 5 H.P., 3 Ph., M/N 335TVX
- I.R. Rotary Screw, 100 H.P., 3 Ph., M/N SSR-EP

PALLET WRAPPER

- Infrapak Hawk Rotary Pallet Wrapper, 4' x 4" Rotary Table, 1 Ph., Conveyor, 4,500 # Hyd. Scissor Lift Table

±\$500,000.00 COST INVENTORY

- ±5,000 Ass't. Aluminum Sheets, 48"x96", 48"x120" & 48"x144", Etc.
- ±80,000 #s Aluminum & S.S. Coil Stock 24"-48" Width
- ±18,000 Ball Grained Litho Plates, 25.5"x36"
- Good Qty. Ball Grained Silica 200,250 & Quartz 3/0
- Ass't. & S.S. Coil & Sheet Stock & Etc. & Etc.

2006



KAESER COMPRESSOR



KAESER AIR DRYER

2007



BETENBENDER 72" HYD. SHEAR

2004



NEW HOLLAND SKID STEER LOADER



ALUMINUM SHEET STOCK (PARTIAL VIEW)



COIL STOCK (PARTIAL VIEW)



BALL GRAINED LITHO PLATES (PARTIAL VIEW)



2000 GROVE MANLIFT

Aaron Posnik

AUCTIONEERS • APPRAISERS

MA Auc. Lic. #161 • Est. 1932 • PA Auc. Lic. #AY000241L

WEDNESDAY, MAY 21ST AT 10:00 A.M.



2004 KENWORTH
24' BOX TRUCK



1990 FORD F700
22' BOX TRUCK



1998 FORD
20' BOX TRUCK



1970 FORD L9000
24' ROLL BACK TRUCK

BOX TRUCKS

- 2004 Kenworth T300 Diesel 24' Box Truck, AT, Air Brakes, AC, 320 GVWR, Alum. Wheels, Vert. Chrome Exhaust, 6 Cyl. Cummins Turbo Diesel Eng., Dual Rear Wheels, (100,944 Miles) •
- 1998 Ford L8513 Diesel 20' Box Truck, 5 Sp. Hi-Lo Man. Trans., PS, Air Brakes, AC, 6 Cyl. Cummins Turbo Diesel Eng., Dual Rear Wheels w/ Roll Door & Hyd. Lift Gate, (194,605 Miles) •
- 1990 Ford F-700, 22' Box Truck, 6 Sp. Man. Trans., V8 Gas Eng., PS, Dual Rear Wheels, Hyd. Brakes w/ Roll Door & Hyd. Lift Gate, (69,730 Miles) •

PICKUP TRUCK

- 2004 Ford F-350XLS, 4x4, AT, AC •

ROLLBACK TRUCK

- 1970 L9000, Diesel, Fuller Split Gear Man. Trans., PTO, Tandem Axle, 6 Cyl. Cummins Turbo Diesel Eng., PS, Air Brakes, Dual Rear Wheels, (252,700 Miles) w/ Jerr-Dan 24' x 8' Roll Bar Car Carrier Body •

CAB & CHASIS

- 1988 Ford F-800, 5 Sp. Man. Trans., Air Brakes, 2-Spd. Rear, V8 Gas Eng., PS, Dual Rear Wheels, (31,144 Miles) •

MANLIFT

- 2000 Grove Aerial Manlift, Elec., 40' Lift Ht., Solid Tires, 4' Bucket, M/N AMZ46NE, (592 Hrs.) •

TRAILERS

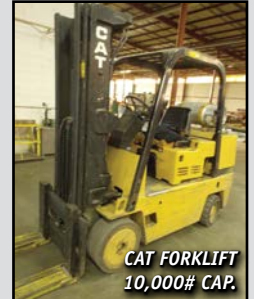
- 2007 Reitnauer Big Bubba 45' Split T/A Aluminum Flat Bed Trailer, 100,000 GVWR w/ Headboard •
- (3) Great Dane 45' T/A Trailer Vans • Dorsey 53' T/A Trailer Van •

SKID STEER LOADER

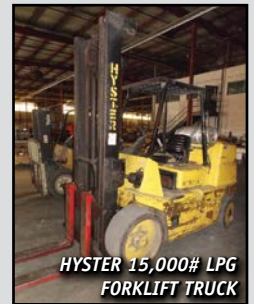
- 2004 New Holland LS185B, Enclosed Cab, Quick Disconnect Bucket, Heat/AC, 77" GP Bucket, Diesel, Counter Weights, Aug. Hyd. •

FORKLIFTS

- Hyster 15,000# Cap., LPG, 134" Lift Ht., 2-Stage Mast., Solid Tires, ROPS, M/N S155XL, (4,810 Hrs.) •
- CAT 10,000# Cap., LPG, 188" Lift Ht., 3-Stage Mast, Solid Tires, ROPS, M/N TC100D, S/N 5KB02279, (4,860 Hrs.) •
- Hyster 8,000# Cap., LPG, 121" Lift Ht., 2-Stage Mast, Side Shifter, Solid Tires, ROPS, M/N S8XL, (3,253 Hrs.) •
- Yale 6,000# Cap., LPG, 114" Lift Ht., 2-Stage Mast, Pneu. Tires, ROPS, M/N GLP060, (5,088 Hrs.) •
- Hyster 3,000# Cap., LPG, 189" Lift Ht., 3-Stage Mast, Solid Tires, ROPS, M/N 530XM, (13,380 Hrs.) •
- Datsun 3,000# Cap., LPG, 106" Lift Ht., 2-Stage Mast, Solid Tires, ROPS, M/N CFG103-1, (1,337 Hrs.) •
- Clark 5,500# Cap., LPG, 124" Lift Ht., 2-Stage Mast, Solid Tires, ROPS, M/N C500Y-55, (8,208 Hrs.) •
- Komatsu 6,000# Cap., Elec., 183" Lift Ht., 3-Stage Mast, Side Shifter, Solid Tires, ROPS, M/N FB30SH-4, (3,980 Hrs.) •
- Hyster 3,000# Cap., Elec., 192" Lift Ht., 2-Stage Mast, Solid Tires, ROPS, M/N E30BS, (8,390 Hrs.) •
- Yale 4,000# Cap., LPG, 168" Lift Ht., 3-Stage Mast, Solid Tires, ROPS, M/N GLC040, (6,700 Hrs.) •
- CAT 3,000# Cap., Elec., 2-Stage Mast, Side Shifter, Solid Tires, ROPS, M/N MC30, (3,290 Hrs.) •
- CAT 3,000# Cap., LPG, 2-Stage Mast, Solid Tires, ROPS, (3,300 Hrs.) •
- Crown 6,000# Cap., Elec. Walk-Behind Pallet Jack, M/N 60PW27-3 •



CAT FORKLIFT
10,000# CAP.



HYSTER 15,000# LPG
FORKLIFT TRUCK



YALE 4,000# CAP.
FORKLIFT



DATSUM 3,000# LPG
FORKLIFT TRUCK



DEGREASING LINE

MACHINERY & EQUIPMENT LOCATED AT: 1 CORTICELLI STREET, FLORENCE, MASSACHUSETTS

ALUMINUM DEGREASING LINE

Consisting of:

- (2) American Steel 6,000# Cap. Payoff Reels •
- (3) S.S. Solution Tanks •
- Driven 72" Pinch Roll • 58" Stand In Line Flatteners •
- Shear & Run Out Table •
- Bushman Coil Tipper, 5 Ton Cap. •

BALL GRAINING EQUIPMENT

Scrubbing Line Consisting Of:

- 60" 2-Roll Scrubbing Tank Machine •
- 7'x5' Roll Feeder/Straightener •
- 10'x6' 6-Strand Out Feed Motorized Conveyor Table •

Ball Grain Tables Including:

- (2) 10'x6' Tilting/Incline Pneu. Ball Grain Tables •
- (2) 15'x6' Tilting/Incline Pneu. Ball Grain Tables •

PLANT SUPPORT EQUIPMENT

- 200' H.D. Steel Pallet Racking, 8', 10' & 12' •
- Kellogg America 2-Stage Air Compressor, 10 H.P., 3 Ph., w/ Zeks Air Dryer •
- Wells-McLain Gas Boiler, M/N 678 •
- Challenger 36" Paper Cutter, 2 H.P., 1 Ph. •
- Toledo Pipe Threader, M/N 999 •
- Hercules Port. Hyd. Engine Hoist, 1 Ton Cap. •
- Hyd. Lifting Tables • Hyd. Pallet Jacks •
- Gd. Qty. Power Tools • Pneu. Nailers • Chainsaws • Platform Scale •
- Parts Washer • Pallet Racking • Steel Shelving • Scaffolding •
- Step, Ext. & Stock Ladders • Barrel & Hand Trucks •
- Pedestal Shop Fans • Shop Vac's • Flameproof Cabinets •
- Vidmar & Lista Tool Cabinets • Step Stools •
- Strapping Mach's • Workbenches • Etc. • Etc. •

OFFICE MACHINES & FURNISHINGS

- ESI Phone System w/ (10) Handsets •
- Dell Core Duo PC's • HP LaserJet & Brother Printers •
- Dell MFP1815 & Canon MP530 All-In-One Machines •
- Zebra Label Printer • Check Scanner •
- 8' Conference Table • Executive & Secretarial Desks & Chairs •
- Credenzas • Bookcases • File Cabinets • Etc., Etc. •

MACHINE TOOLS

- Bridgeport Series I Vertical Miller, 9"x42" Table, Power Feed, 2 H.P., 1 Ph. w/ Anilam D.R.O. •
- Bridgeport Vertical Miller, 9"x48" Table, Power Feed, Vari-Spd., 2 H.P., 1 Ph. •
- Bridgeport Vertical Miller, 9"x48" Table, 1 H.P., 3 Ph. •
- Takisawa Yuasa Lathe, 14"x40" B.C., 3 Ph., M/N. 1440 •
- Reid Surface Grinder, 6"x18" Mag. Chuck, 3 Ph., M/N. 618-2 •
- Southbend Q.C. Gear Lathe 10"x22" B.C., 3 Ph. •
- Gorton 4" Tool Grinder, M/N 265-2 •
- 6" D.E. Pedestal Carbide Grinder, 1/2 H.P., 1 Ph. •
- Greenerd #4 Pedestal Arbor Press •
- Dake #1 1/2 Pedestal Arbor Press •
- Perishable Tooling • Angle Blocks • Collets • Vises • Etc., Etc. •

WOODWORKING MACHINERY

- Kysor Johnson Port. Horiz. Bandsaw, 10"x18", 3 Ph., M/N. J, S/N H26813 •
- Delta 14" Vertical Bandsaw, 14"x14" Table, 3 Ph. •
- Delta 12" Table Saw, Tilt Arbor, 3 Ph., w/ Beisemeyer Fence •
- Dewalt 16" Radian Arm Saw, 7 1/2 H.P., 3 Ph., M/N. GE, S/N 5766 •
- Powermatic 6" Jointer, 1 Ph., M/N. 50, S/N 2364 •
- Delta 6" Jointer, 1 Ph., M/N. 37-255 •
- Rockwell 18" Planer, 5 H.P., 3 Ph., M/N. 22-201 •
- W.T. 4" Belt/10" Disc Sander, 1/3 H.P., 1 Ph. •
- Delta 6" D.E. Bench Grinder, 1/2 H.P., 1 Ph. •
- Dayton 1" Vert. Belt Sander, 1/4 H.P., 1 Ph. •
- Port. 1 & 2 Bag Dust Collectors •

PLEASE NOTE:

Above Referenced Machinery & Equipment
Located at 1 Corticelli Street, Florence, MA
(Approx. 2 Minute Walk from 199 Pine St. Auction Site)

The above referenced lots will be offered for sale in numerical order.
For complete, descriptive listing of each lot
Visit posnik.com or Bidspotter.com