

RECEIVER'S SALE BY
PUBLIC AUCTION

3 LOCATIONS

OIL COMPANY

- **(15) TANK TRUCKS •**
- **CARGO VANS • PICKUP & STAKE BODY TRUCKS •**
- **SERVICE & BOX TRUCKS • SUV'S • TRAILERS •**
- **METALWORKING MACHINERY • SHOP SUPPORT & OFFICE EQUIPMENT •**
- **PARTS INVENTORY • INTELLECTUAL PROPERTIES •**
- **REAL PROPERTY •**



**F & S OIL COMPANY, INC.
AND SUBSIDIARIES**

TO BE SOLD ON THE PREMISES AND BY LIVE INTERNET BIDDING

**WEDNESDAY, APRIL 30TH STARTING AT 10:30 A.M.
AT 532 SOUTH LEONARD STREET, WATERBURY, CONN.**

ADDITIONALLY AT THE FOLLOWING TIMES AND LOCATIONS

OFFICE & SUPPORT EQUIPMENT	4:00 P.M.	325 SANDBANK RD.	CHESHIRE	CT
---------------------------------------	------------------	-------------------------	-----------------	-----------



**REAL PROPERTY LOCATED AT: 196 EAST MAIN STREET, THOMASTON, CT
TO BE SOLD BY DIGITAL IMAGE ON WEDNESDAY, APRIL 30TH AT 12:00 NOON
FROM 532 SOUTH LEONARD STREET, WATERBURY, CT LOCATION**



INSPECTION: TUESDAY, APRIL 29TH – 10:00 A.M. TO 4:00 P.M. & MORNING OF SALE – 8:30 A.M TO 10:30 A.M. AT EACH LOCATION



Visit our Website @ www.posnik.com

Aaron Posnik

AUCTIONEERS • APPRAISERS

2005 PETERBILT TANK TRUCK



**F & S OIL COMPANY, INC.
AND SUBSIDIARIES**

TO BE SOLD ON THE PREMISES AND BY LIVE INTERNET BIDDING
WEDNESDAY, APRIL 30TH STARTING AT 10:30 A.M.
AT 532 SOUTH LEONARD STREET, WATERBURY, CONN.

ADDITIONALLY AT THE FOLLOWING TIME AND LOCATION

OFFICE & SUPPORT EQUIPMENT	4:00 P.M.	325 SANDBANK RD.	CHESHIRE	CT
----------------------------	-----------	------------------	----------	----

**INSPECTION: TUESDAY, APRIL 29TH – 10:00 A.M. TO 4:00 P.M. &
MORNING OF SALE – 8:30 A.M TO 10:30 A.M. AT EACH LOCATION**

AIRPORT:

BRADLEY INTERNATIONAL AIRPORT (BDL) – APPROX. 31 MILES TO SITE
11 SCHOEPHOESTER ROAD, WINDSOR LOCKS, CT 1-860-292-2000

DIRECTIONS:

FROM BRADLEY INTERNATIONAL AIRPORT – TAKE I-91 S TOWARD HARTFORD.
APPROX. 4 MILES. MERGE ONTO I-84 W VIA EXIT #32A TOWARD WATERBURY.
APPROX. 30.5 MILES. MERGE ONTO CT-8 S VIA EXIT #19 ON THE LEFT TOWARD
NAUGATUCK/ BRIDGEPORT. APPROX. 0.5 MILE. TAKE EXIT #30 TOWARD
WASHINGTON AVENUE. APPROX. 0.2 MILE. STAY STRAIGHT TO GO ONTO CHARLES
STREET. APPROX. 0.5 MILE. CHARLES ST BECOMES 7TH STREET. APPROX. 0.1 MILE.
TURN SLIGHT RIGHT ONTO S. LEONARD STREET. (WATCH FOR AUCTION SIGNS).

HOTELS:

HAMPTON INN – 777 CHASE PARKWAY, WATERBURY, CT 1-203-753-1777

MARIOTT HOTEL – 63 GRAND STREET, WATERBURY, CT 1-203-596-1000

HOLIDAY INN – 88 UNION STREET, WATERBURY, CT 1-800-345-8082

TERMS & CONDITIONS:

EVERYTHING SOLD "AS IS/WHERE IS"

TERMS OF SALE:

PERSONAL PROPERTY: 25% DEPOSIT AT TIME OF SALE BY CASH OR CERTIFIED OR
BANK WIRE TRANSFER. 10% BUYERS PREMIUM APPLIES ON ALL ONSITE PURCHASES.
13% BUYERS PREMIUM APPLIES ON ALL INTERNET PURCHASES.

REAL PROPERTY: \$20,000.00 INITIAL DEPOSIT DUE AT AUCTION SALE BY CERTIFIED
OR BANK CHECK. DEPOSIT MUST BE INCREASED TO 10% OF PURCHASE PRICE WITHIN
5 BUSINESS DAYS. 10% BUYERS PREMIUM APPLIES ON ALL ONSITE PURCHASES. 13%
BUYERS PREMIUM APPLIES ON ALL INTERNET PURCHASES.

PERSONAL OR COMPANY CHECK ACCEPTED ONLY IF ACCOMPANIED WITH A BANK
LETTER GUARANTEEING PAYMENT. EXAMPLE OF BANK LETTER OF GUARANTEE: THIS
BANK GUARANTEES PAYMENT TO AARON POSNIK & CO., INC. ON ACCOUNT # _____ UP
TO THE AMOUNT OF \$ _____ FOR PURCHASES MADE AT THE F & S OIL COMPANY, INC.
AND SUBSIDIARIES AUCTION TO BE HELD ON APRIL 30TH. NO PURCHASE REMOVED
UNTIL COMPLETE SETTLEMENT IS MADE. OTHER TERMS TO BE ANNOUNCED AT TIME
OF SALE.

SALES TAX:

CONNECTICUT SALE TAX LAWS APPLY. DEALERS BRING COPY OF EXEMPT CERTIFICATE.

BID LIVE BY PHONE:

CALL US BY **APRIL 29TH** TO SET UP THE DETAILS.

BID LIVE BY INTERNET:

VISIT OUR WEBSITE AT WWW.POSNIK.COM OR WWW.BIDSPOTTER.COM
FOR INSTRUCTIONS ON BIDDING ONLINE.

BID BY MAIL:

IF YOU CANNOT ATTEND THIS AUCTION IN PERSON WE WILL BE HAPPY TO RECEIVE
YOUR BID ON THE ITEMS THAT YOU DESIGNATE (IF YOUR BID IS SENT BY MAIL OR
FAX AND RECEIVED BY OUR OFFICE AT LEAST 24 HOURS PRIOR TO THE
COMMENCEMENT OF THE SALE). IF YOU WISH TO BID BY MAIL, KINDLY PROVIDE A
COMPLETE LIST OF THE ITEMS DESIRED AND ENCLOSE A 25% DEPOSIT BY CERTIFIED
CHECK. YOU WILL BE RESPONSIBLE FOR PURCHASES IF YOU ARE THE HIGH BIDDER,
UNDER THE TERMS AND CONDITIONS TO BE ANNOUNCED AT TIME OF SALE. IF YOU
ARE THE SUCCESSFUL BIDDER, WE WILL NOTIFY YOU WITHIN 24 HOURS OF THE SALE
AND YOU MUST MAKE PAYMENT OF THE BALANCE DUE BY WIRE TRANSFER TO OUR
BANK WITHIN 24 HOURS OF NOTIFICATION. IF YOU ARE UNSUCCESSFUL IN YOUR
BID, YOUR DEPOSIT WILL BE RETURNED TO YOU WITHIN 72 HOURS OF THE SALE.

IMPORTANT NOTICE:

THE INFORMATION DESCRIBED IN THIS BROCHURE IS CORRECT TO THE BEST OF OUR
KNOWLEDGE BUT WE CANNOT GUARANTEE SAME. IT IS FOR THIS REASON THAT
BUYERS SHOULD AVAIL THEMSELVES OF THE OPPORTUNITY FOR INSPECTION PRIOR
TO THE SALE.

CHESTNUT OAK ASSOCIATES, R.E.B. #751308



**HARBOUR CAPITAL
CORPORATION**

LEASE FINANCING

Maximize your bidding power! Get pre-approved for 5 Thousand to 3 Million
dollars in lease financing with no financials required for up to 100k.

For more information call David Johnson at Harbour Capital at 866-735-2662.

To apply online go to: www.harbourcapital.com



2002 I.H. 440 TANK TRUCK



1998 PETERBILT 335 TANK TRUCK



1997 I.H. 4900 TANK TRUCK



1997 FREIGHTLINER FL70 TANK TRUCK

WEDNESDAY, APRIL 30TH AT 10:30 A.M.



1996 I.H. 4700



1995 FREIGHTLINER FL80



1992 I.H. 4900



1992 I.H. 4900

T A N K

TANK TRUCKS

- 2005 Peterbilt Tank Truck, Tandem Axle, Diesel, AT, AC, 2900 Gal. Alum. Tank •
- 2002 I.H. 4400 Tank Truck, Tandem Axle, Diesel, AT, AC, 3400 Gal. Alum. Tank •
- 1998 Peterbilt 335 Tank Truck, Diesel, AT, Transtech 2800 Gal. Alum. Tank •
 - 1997 Freightliner FL70 Tank Truck, Diesel, Allison 5 Sp. AT, Chelsea P.T.O., 2700 Gal. Alum. Tank •
- 1997 I.H. 4900 Tank Truck, Diesel, I.H. 6-Plus Man. Trans., 2700 Gal. Alum. Tank •
- 1996 I.H. 4700 SER Tank Truck, Diesel, 6-Plus Std. Trans., Tri-State 2800 Gal. Alum. Tank •
- 1995 Freightliner FL80 Tank Truck, Tandem Axle, Diesel, AT, AC, 2800 Gal. Alum. Tank •
- (2) 1992 I.H. 4900 Tank Trucks, Eaton Fuller 10 Sp. Hi-Lo Trans., Diesel, 2800 Gal. Alum. Tank •
 - 1992 I.H. 4900 Tank Truck, 6 Sp. Plus Std. Trans., Diesel, 2800 Gal. Alum. Tank •
- 1991 I.H. 4900 Tank Truck, Eaton Fuller 10 Sp. Trans., Diesel, 2800 Gal. Alum. Tank •
- 1990 I.H. 4900 Tank Truck, Eaton Fuller 10 Sp. Hi-Lo Trans., Diesel, 3400 Gal. Alum. Tank •
- 1990 I.H. 4000 SER Tank Truck, Eaton Fuller 10 Sp. Hi-Lo Trans., Diesel, 3400 Gal. Alum. Tank •
- 1989 Mack CS300P Mack C5300P Tank Truck, Std. Trans., Diesel, 2700 Gal. Alum. Tank •

SERVICE/UTILITY TRUCKS

- 2005 GMC Magna Van, 10' Utility Body, AT, AC •
- 2003 GMC 3500 Service Truck, AT, 4x4, AC, Lift Gate w/ Ladder Rack •
- 2001 Ford E350 Super Duty, V8, AT, AC, Diesel w/ Ladder Rack •
 - 2001 Ford E350 Super Duty, V8, AT, AC, Diesel •
- 1991 I.H. 4600, Std. Trans., Hyd. Lift Gate •

STAKE BODY TRUCKS

- 2002 Chevy 3500 Stake Body, AT, Dual Wheels, 6' Bed, AC, PL w/ Hyd. Lift Gate •
- 1999 Chevy HD3500, 14' Stake Body, Dual Wheels, AT, AC, PL •



2002 CHEVY STAKE TRUCK



2005 GMC MAGNA VAN



2001 FORD SERVICE TRUCK



2002 CHEVY STAKE TRUCK

SUV'S

- 2007 Mercedes-Benz ML350, 4-Matic, 4 Dr., Full Power, Leather Interior, Moonroof, Nav. Sys. •
- 2004 BMW X5, 3.0i, AWD, AT, AC, 4 Dr., Full Power, Leather Interior •
- 1997 Ford Explorer, 2D, AT, 4x4, Full Power, AC, Leather Interior •

CARGO VANS

- 2006 GMC G3500 Extended, V8, AT, AC w/ Ladder Rack •
- 2002 Ford E350 Super Duty, V8, AT, AC, PL, PW w/ Ladder Rack •
 - 2001 GMC 3500 Savana, V8, AT, AC w/ Ladder Rack •
- 2000 Ford E350 Super Duty Extended, V8, AT, AC, Diesel w/ Ladder Rack •
 - 2000 Ford E350 Super Duty, V8, AT, AC, Diesel w/ Ladder Rack •
 - 2000 Ford E350 Super Duty, V8, AT, AC, Diesel w/ Ladder Rack •
 - 1999 Ford E350 Super Duty, V8, AT, AC, Diesel w/ Ladder Rack •
 - 1999 Chevy G3500 Express, V8, AT, AC w/ Ladder Rack •
 - 1997 Ford E350 Econoline, V8, AT, AC, Diesel •
 - 1997 Ford E350 Econoline, V8, AT, AC •
 - 1997 Ford E350 Econoline, V8, AT, AC, Diesel w/ Ladder Rack •
 - 1997 Ford E350 Econoline, V8, AT, AC w/ Ladder Rack •
 - 1994 Ford E350 Econoline, V8, AT, AC •
 - 1991 Ford E350 Econoline, V8, AT, AT, AC, Diesel •

PICKUP TRUCKS

- 1996 GMC Sierra 1500SL, V8, AT, AC, 4x4, 8' Bed w/ Liner •
- 1995 Chevy Silverado 2500, Crew Cab, AT, 4x4, 6' Bed •
- 1990 Chevy Scottsdale 2500, AT, 8' Bed, 4x4, Eagle Lift Gate w/ Fisher Hyd. Plow •
- 1987 Ford F350 XLT Lariat, 4 Sp. Trans., 8' Bed, 4x4 w/ Fisher 4-Way Hyd. Plow •

MISCELLANEOUS TRUCKS

- 1996 Ford E350, 14' Hi-Cube Van, AT, AC, AM/FM Stereo •
- 1978 I.H. 1624 - 14' Box Truck, Std. Trans., Chelsea P.T.O. •

TRAILERS

- 2001 Trailflite 10' Utility Trailer, 2000# Cap. •
- Gindy 40' Tandem Axle Box Storage Trailer w/ Swing Doors •

Aaron Posnik

AUCTIONEERS • APPRAISERS

MA Auc. Lic. #161 • Est. 1932 • PA Auc. Lic. #AU-0038-R

RECEIVER'S SALE BY
PUBLIC AUCTION



1992 I.H. 4900



1991 I.H. 4900



1990 I.H. 4900



1990 I.H. 4000

T R U C K S

METALWORKING MACHINERY

- Chicago 8' Manual Brake, Mod. 818 •
- Pexto 54" Shear, 16 Ga., Ft. Oper., Mod. 152K •
- Tennsmith 48" Port. Man. Brake, 22 Ga., Mod. U4822 •
- Tennsmith 36" Man. Slip Roller, 22 Ga., Mod. SR-36 •
- (2) Lockformer Port. Roll Formers, 24 Ga., 1 Ph. •
- Lockformer Slitter, 16 Ga., 1 Ph., Mod. 3020 •
- Etc. • Etc. •

SHOP SUPPORT EQUIPMENT

- AG Solutions Waste Oil Recovery Sys., Mod. B500 •
- 1000 Gal. Waste Oil Storage Tank •
- 200 & 275 Gal. Oil Tanks w/ Pumps •
- Dayton Twin Cyl. Air Compressor, 5 H.P., 3 Ph. •
- Migmaster 250 Amp Port. Welder, Mod. M-250 •
- Kental 17" Ped. Drill Press, ½ H.P., 1 Ph. •
- Delta D.E. Ped. Grinder, ½ H.P., 1 Ph. •
- 12 Ton H-Frame Shop Press, Bench Type •
- Excello Port. Pressure Washer, 6 H.P., Gas •
- (2) CAT & Northern Hyd. Pallet Jacks, 5000# Cap. •
- Battery Chargers • Port. Lube Units • Space Heaters •
- Shop & Soot Vac's • Combustion Test Kits • Drop Lights •
- Boston Thickness Gauges • Hand Tools • Creepers •
- Fiberglass Step & Ext. Ladders • Met. Shelving •
- Parts Cabinets • Workbenches • Etc. • Etc. •

INTELLECTUAL PROPERTIES

Including but not Limited to:

- Trade Names, Trademarks, Service Marks •
- Telephone, Telex & Telephone Facsimile Numbers •
- Telephone & Other Directory Listings •
- All Internet Domain Names & Websites •
- Non-Competitive Agreements •
- Confidentiality Agreements •
- and All Goodwill Associated with Intellectual Properties •

INVENTORY

National Brand Oil Burner, Boiler Parts & Accessory Inventory Consisting of:

- Controls • Transformers • Motors • Valves •
- Filters • Thermostats • Expansion Tanks •
- V-Belts • Refrigerant • Nozzles •
- Brass, Copper, Black Mal •
- Cast & Compression Fittings • Fasteners •
- Many More Items Too Numerous To Mention •

OFFICE MACHINES

- (14) Intermec Hand Held Sales Data Terminals, Mod. Norand 6000 w/ Receipts Printers & Chargers •
- Surveillance System w/ (7) Cameras & Bosch Dig. Versatile Receiver •
- (15) Ass't HP DeskJet & LaserJet Printers •
- (6) Ass't Lexmark & IBM Printers •
- (2) Brother Multi-Function Office Machines •
- Fellows Power Shredder •
- Panini Check Scanner • Sony 13" Color TV •
- Refrigerators • Microwaves • Etc. • Etc. •

OFFICE FURNISHINGS

- 7' Conference Table w/ (6) Chairs •
- (16) Ass't Executive & Secretarial Desks •
- Credenza's •
- Executive, Secretarial, Arm & Side Chairs •
- (50) Ass't Metal, Vertical & Lateral File Cabinets, 2, 3 & 4 Dr. •
- Bookcases • Formica Counters • Workstations •
- Sentry 1D Dig. Comb. Safe •
- Marking & Bulletin Boards •
- Ass't Office Accessories • Etc. • Etc. •



2006 GMC CARGO VAN



2001 GMC CARGO VAN



2002 FORD CARGO VAN



2000 FORD CARGO VAN

ATTEND • BUY • SAVE

325 SANDBANK ROAD, CHESHIRE, CT • TO BE SOLD AT 4:00 P.M.

OFFICE MACHINES

- (2) HP LaserJet 1200 Printers •
- (3) HP DeskJet Printers, 842C, 5650 & 6840 •
- HP OfficeJet Pro 550 Printer •
- (2) IBM Pin Printers #4232 & 4274 •
- Panini Check Scanner • Paychex Dig. Time Clock •
- GBC Laminator • Toshiba 13" Color TV • Etc. • Etc. •

OFFICE FURNISHINGS

- (20) Ass't 2, 4 & 5D Metal File Cabinets •
- (10) Ass't Executive & Secretarial Desks w/ Chairs •
- Bookcases • Office Tables • Storage Cabinets •
- Hotpoint Refrig./Freezer • Microwave Oven •
- Coffeemaker • Paper Cutter •
- Bulletin Boards • Etc. • Etc. •

SHOP SUPPORT EQUIPMENT

- Ridgid Pipe Threader, Mod. A90-70 •
 - Malco 48" Man. Mini-Brake, Mod. MB48A •
 - 20' Ext. Ladder • Hand Trucks •
 - Met. Shelving • Parts Cabinets • Etc. • Etc. •
- Gd. Qty. Oil Burner & Boiler Parts Accessories**

RECEIVER'S SALE BY
PUBLIC AUCTION

★ **REAL ESTATE** ★

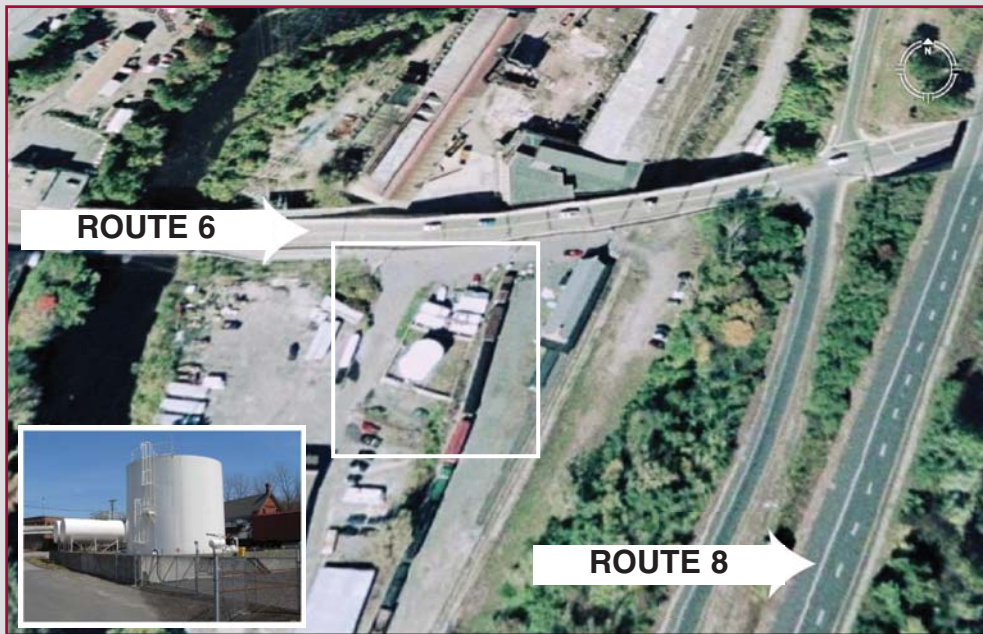
**196 EAST MAIN STREET
THOMASTON, CONNECTICUT**

3% BROKER INCENTIVE

**SEND FOR BIDDER'S
INFORMATIONAL PACKAGE
INSPECTION BY APPOINTMENT**

- (5) TANK •
- ±230,000 GALLON CAPACITY •
- OIL STORAGE FACILITY**
- ±1/2 ACRE OF LAND • ± 575 S/F BUILDING •
- Zoned: M-2, Heavy Industrial • Public Water & Sewer • Fence Yard w/Gate •

**TO BE SOLD BY DIGITAL IMAGE ON WEDNESDAY, APRIL 30TH AT 12:00 NOON
FROM 532 SOUTH LEONARD STREET, WATERBURY AUCTION SITE**



**REAL PROPERTY: \$20,000.00 INITIAL DEPOSIT DUE AT AUCTION BY CASH, CERTIFIED OR BANK CHECK
DEPOSIT MUST BE INCREASED TO 10% OF PURCHASE PRICE WITHIN 5 BUSINESS DAYS**

10% BUYERS PREMIUM APPLIES TO ONSITE PURCHASE

13% BUYERS PREMIUM APPLIES TO INTERNET PURCHASE

OTHER TERMS TO BE ANNOUNED AT TIME OF SALE

CHESTNUT OAK ASSOCIATES, INC. R.E.B. #751308

Visit our Website @ www.posnik.com

Aaron Posnik

AUCTIONEERS • APPRAISERS

RECEIVER'S SALE BY
PUBLIC AUCTION
 3 LOCATIONS
OIL COMPANY

- (15) TANK TRUCKS •
- CARGO VANS • PICKUP & STAKE BODY TRUCKS •
- SERVICE & BOX TRUCKS • SUV'S • TRAILERS •
- METALWORKING MACHINERY • SHOP SUPPORT & OFFICE EQUIPMENT •
- PARTS INVENTORY • INTELLECTUAL PROPERTIES •
- REAL PROPERTY •



**F & S OIL COMPANY, INC.
 AND SUBSIDIARIES**

TO BE SOLD ON THE PREMISES AND BY LIVE INTERNET BIDDING

WEDNESDAY, APRIL 30TH STARTING AT 10:30 A.M.

AT 532 SOUTH LEONARD STREET, WATERBURY, CONN.

ADDITIONALLY AT THE FOLLOWING TIME AND LOCATION

OFFICE & SUPPORT EQUIPMENT	4:00 P.M.	325 SANDBANK RD.	CHESHIRE	CT
----------------------------	-----------	------------------	----------	----

SALE PER ORDER OF SUPERIOR COURT JUDICIAL DISTRICT OF HARTFORD
 CARLTON E. HELMING AND HELMINGS & COMPANY, P.C., RECEIVER
 JAMES TANCREDI, ESQ.

OF THE FIRM OF DAY PITNEY LLP, 242 TRUMBULL STREET, HARTFORD, CT
 ATTORNEY FOR RECEIVER

TERMS OF SALE

PERSONAL PROPERTY: 25% DEPOSIT CASH OR CERTIFIED CHECK

REAL PROPERTY: \$20,000.00 INITIAL DEPOSIT DUE AT AUCTION SALE BY CASH, CERTIFIED OR BANK CHECK
 DEPOSIT MUST BE INCREASED TO 10% OF PURCHASE PRICE WITHIN 5 BUSINESS DAYS

10% BUYERS PREMIUM APPLIES ON ALL ONSITE PURCHASES

13% BUYERS PREMIUM APPLIES ON ALL INTERNET PURCHASES

OTHER TERMS TO BE ANNOUNCED AT TIME OF SALE

INSPECTION: TUESDAY, APRIL 29TH - 10:00 A.M. TO 4:00 P.M. &
 MORNING OF SALE - 8:30 A.M. TO 10:30 A.M. AT EACH LOCATION

Aaron Posnik

AUCTIONEERS • APPRAISERS

MA Auc. Lic. #161
 Est. 1932
 PA Auc. Lic. #AU-0038-R

Visit our Website @ www.posnik.com

Aaron Posnik & Co., Inc.
 83 State Street • Springfield, MA 01103
 (413) 733-5238 (Fax) 731-5946

Aaron Posnik & Co., Inc.
 83 State Street
 Springfield, MA 01103

Presorted
 First Class Mail
 U.S. POSTAGE
 PAID
 Permit No. 12
 Springfield, MA

RETURN SERVICE REQUESTED

**LIVE ONSITE & LIVE INTERNET BIDDING
 AVAILABLE AT WWW.POSNIKLIVE.COM**

Aaron Posnik & Co., Inc.
 5 Great Valley Parkway, Suite 244 • Malvern, (Philadelphia) PA 19003
 (610) 853-6655 (Fax) 583-6633

**WEDNESDAY, APRIL 30TH STARTING AT 10:30 A.M.
 532 SOUTH LEONARD STREET, WATERBURY, CONNECTICUT**



2007 MERCEDES ML350 SUV



2004 BMW X5 SUV

Visit our Website @ www.posnik.com

TO BE SOLD ON THE PREMISES

- OIL TANKERS
- PICKUP TRUCKS
- STAKE TRUCKS
- BOX TRUCKS
- TRAILERS
- SUV'S
- CARGO VANS
- MACHINERY
- EQUIPMENT
- PARTS INVENTORY

BID FROM THE COMFORT OF YOUR OFFICE!!!

If you can't personally attend the auction sale, you don't have to miss out on the bidding.

You can bid on the equipment in the following ways:

- **LIVE PHONE BID** - Call us by APRIL 29TH to set up details*
- **INTERNET BID** - Visit our website www.posniklive.com to register online*
- **PROXY BID** - Call us and we'll be happy to send you a proxy bid form.

Fill it out, Fax it back and we'll bid on your item for you.*

***We must receive a 25% deposit of all proxy and phone bids before the auction to secure your bid. No credit cards.**



**10% BUYERS PREMIUM APPLIES ON ALL ONSITE PURCHASES
 13% BUYERS PREMIUM APPLIES ON ALL INTERNET PURCHASES**

Aaron Posnik

AUCTIONEERS • APPRAISERS

Aaron Posnik & Co., Inc.
 83 State Street • Springfield, MA 01103
 (413) 733-5238 (Fax) 731-5946

MA Auc. Lic. #161 • Est. 1932 • PA Auc. Lic. #AU-0038-R

Aaron Posnik & Co., Inc.
 5 Great Valley Parkway, Suite 244 • Malvern, (Philadelphia) PA 19003
 (610) 853-6655 (Fax) 583-6633