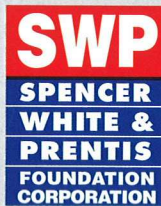


PUBLIC AUCTION

NOV. 30TH • DEC. 2ND • DEC. 4TH

STARTING AT 11:00 AM EACH DAY

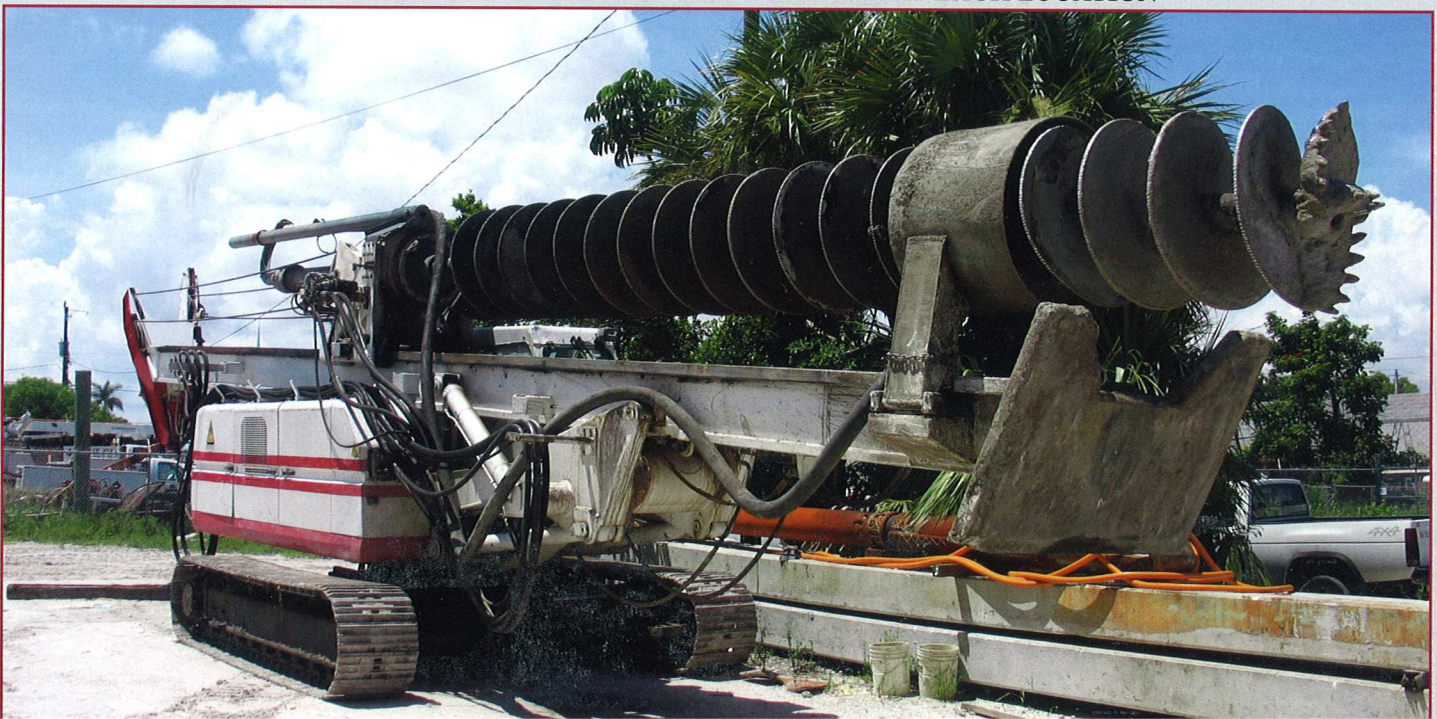
- MASSACHUSETTS • NEW JERSEY • FLORIDA •
- GEOTECHNICAL ENGINEERING**
- AND
- FOUNDATION CONTRACTOR**
- DRILLING MACHINES • CRANES •
- EXCAVATOR • BACKHOES • CONCRETE PUMPS • COMPRESSORS •
- WELDERS • GENERATORS • FORKLIFTS • MANLIFTS •
- TRUCK TRACTORS • TRAILERS • PICKUP, UTILITY & FLATBED TRUCKS •
- CONTRACTORS EQUIPMENT • HAND TOOLS • INVENTORY •
- OFFICE MACHINES & FURNISHINGS •



TO BE SOLD ON THE PREMISES AT THE FOLLOWING LOCATIONS

THURSDAY, NOVEMBER 30 TH	11:00 A.M.	6 COLLETTI LANE	SWANSEA	MASSACHUSETTS
THURSDAY, DECEMBER 2 ND	11:00 A.M.	160 ROUTE 94	LAFAYETTE	NEW JERSEY
SATURDAY, DECEMBER 4 TH	11:00 A.M.	1932 N. CONGRESS AVE.	W. PALM BEACH	FLORIDA

INSPECTION: 10:00 A.M. to 4:00 P.M. AT EACH LOCATION ON DAY PRIOR TO EACH SALE
& MORNING OF SALE 8:30 A.M. - 11:00 A.M. AT EACH LOCATION





6 COLLETTI LANE
SWANSEA, MASSACHUSETTS

TO BE SOLD ON THE PREMISES
TUESDAY, NOVEMBER 30TH
AT 11:00 A.M.

INSPECTION:

MONDAY, NOVEMBER 29TH - 10:00 A.M. TO 4:00 P.M.
& MORNING OF SALE - 8:30 A.M. TO 11:00 A.M.

AIRPORTS:

TF GREEN AIRPORT (PVD), PROVIDENCE, RI
APPROX. 19 MILES TO AUCTION SITE
LOGAN INTERNATIONAL AIRPORT (BOS), BOSTON, MA
APPROX. 57 MILES TO AUCTION SITE

LODGING:

SWANSEA MOTOR INN - (APPROX. 1 MILE TO SITE)
SWANSEA, MA 508-675-7700
QUALITY INN - (APPROX. 4 MILES TO SITE)
SOMERSET, MA 508-678-4545
HAMPTON INN - (APPROX. 7 MILES TO SITE)
SEEKONK, MA 508-336-9000

DIRECTIONS:

FROM TF GREEN AIRPORT - TAKE I-95 N TOWARDS PROVIDENCE APPROX. 7.2 MILES; MERGE ONTO I-195 E - EXIT #20 TOWARDS EAST PROVIDENCE/CAPE COD APPROX. 8.6 MILES; TAKE RT-136 S - EXIT #2 TOWARD WARREN, RI/US-6 E/NEWPORT, RI APPROX. 0.3 MILES; MERGE ONTO JAMES REYNOLDS RD./MA-136 APPROX. 0.1 MILE; TURN LEFT ONTO US-6/GRAND ARMY OF THE REPUBLIC HWY./FALL RIVER AVE. CONTINUE TO FOLLOW US-6 APPROX. 1.7 MILES; TURN LEFT ONTO COLLETTI LN. (WATCH FOR AUCTION SIGNS).

FROM LOGAN INT'L AIRPORT - TAKE I-90 W APPROX. 2.6 MILES; TAKE I-93 S - EXIT #23 APPROX. 0.4 MILES; MERGE ONTO MA-3 S APPROX. 6.8 MILES; MA-3 BECOMES US-1 S APPROX. 5.4 MILES; MERGE ONTO MA-24 S - EXIT #4 ON LEFT TOWARDS BROCKTON APPROX. 33.4 MILES; MERGE ONTO MA-79 S - EXIT #7 TOWARDS N. FALL RIVER /SOMERSET APPROX. 2.3 MILES; TAKE US-6 W/RT-138 N EXIT TOWARDS SOMERSET/SWANSEA APPROX. 0.2 MILES; TURN SLIGHT RIGHT ONTO US-6/MA-138/BRIGHTMAN ST BRIDGE. CONTINUE TO FOLLOW US-6 APPROX. 4.9 MILES; TURN RIGHT ONTO COLLETTI LN (WATCH FOR AUCTION SIGNS).

TERMS & CONDITIONS:

EVERYTHING SOLD "AS IS/WHERE IS"

TERMS OF SALE:

25% DEPOSIT AT TIME OF SALE BY CASH OR CERTIFIED OR BANK WIRE TRANSFER. 10% BUYERS PREMIUM APPLIES. PERSONAL OR COMPANY CHECK ACCEPTED ONLY IF ACCOMPANIED WITH A BANK LETTER GUARANTEEING PAYMENT. EXAMPLE OF BANK LETTER OF GUARANTEE: THIS BANK GUARANTEES PAYMENT TO AARON POSNICK & CO., INC. ON ACCOUNT # _____ UP TO THE AMOUNT OF \$ _____ FOR PURCHASES MADE AT THE SPENCER, WHITE & PRENTISS FOUNDATION CORPORATION AUCTION TO BE HELD ON TUESDAY, NOVEMBER 30TH. NO PURCHASE REMOVED UNTIL COMPLETE SETTLEMENT IS MADE. OTHER TERMS TO BE ANNOUNCED AT TIME OF SALE.

SALES TAX:

MASSACHUSETTS SALES TAX LAWS APPLY.
DEALERS BRING COPY OF EXEMPT CERTIFICATE.

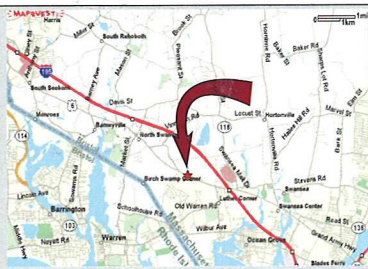
BID BY MAIL:

IF YOU CANNOT ATTEND THIS AUCTION IN PERSON WE WILL BE HAPPY TO RECEIVE YOUR BID ON THE ITEMS THAT YOU DESIGNATE (IF YOUR BID IS SENT BY MAIL OR FAX AND RECEIVED BY OUR OFFICE AT LEAST 24 HOURS PRIOR TO THE COMMENCEMENT OF THE SALE). IF YOU WISH TO BID BY MAIL, KINDLY PROVIDE A COMPLETE LIST OF THE ITEMS DESIRED AND ENCLOSE A 25% DEPOSIT BY CERTIFIED CHECK. YOU WILL BE RESPONSIBLE FOR PURCHASES IF YOU ARE THE HIGH BIDDER, UNDER THE TERMS AND CONDITIONS TO BE ANNOUNCED AT TIME OF SALE. IF YOU ARE THE SUCCESSFUL BIDDER, WE WILL NOTIFY YOU WITHIN 24 HOURS OF THE SALE AND YOU MUST MAKE PAYMENT OF THE BALANCE DUE BY WIRE TRANSFER TO OUR BANK WITHIN 24 HOURS OF NOTIFICATION. IF YOU ARE UNSUCCESSFUL IN YOUR BID, YOUR DEPOSIT WILL BE RETURNED TO YOU WITHIN 72 HOURS OF THE SALE.

IMPORTANT NOTICE:

THE INFORMATION DESCRIBED IN THIS BROCHURE IS CORRECT TO THE BEST OF OUR KNOWLEDGE BUT WE CANNOT GUARANTEE SAME. IT IS FOR THIS REASON THAT BUYERS SHOULD AVAIL THEMSELVES OF THE OPPORTUNITY FOR INSPECTION PRIOR TO THE SALE.

SALE PER ORDER OF SECURED PARTY
RANDALL L. SOUZA, ESQ.
OF THE FIRM OF NIXON PEABODY LLP
ONE CITIZENS PLAZA, PROVIDENCE RI
ATTORNEYS FOR SECURED PARTY



1995 CASAGRANDE C8 DRILL RIG



1992 DAVEY DK150B DRILL RIG



1998 DAVEY KENT DK625 DRILL RIG

DRILL RIGS

- 1999 Davey Kent DK515 Elec. Drill Rig, S/N 15764 •
- 1998 Davey Kent DK625 Crawler Rotary/Percussion Drill Rig, 20' Boom, 16" Pads, S/N 12743 •
- 1996 CAT D3C LGP Crawler Rotary Drill Rig, 50' Boom, 8' Straight Blade, 24" Pads, S/N 5G500248 •
- 1996 I.R. Air Track Crawler Rotary Drill, 16' Boom, 10" Pads, M/N ECM350, S/N R10137 •
- 1995 Casagrande C8 Crawler Rotary Drill Rig, 30' Boom, 20" Pads, S/N C8-07CB-208 •
- 1995 Interoc AN74B Crawler rotary Drill Rig CHB40A, S/N 9072 •
- 1992 Davey Kent DK150B Crawler Rotary/Percussion Drill Rig, 20' Boom, 25" Pads, S/N 12671 •
- 1990 Davey Kent DK150 Crawler Rotary/Percussion Drill Rig, 20' Boom, 16" Pads, S/N 157 •
- 1989 Klemm Crawler Percussion Drill Rig, 20' Boom, 16" Pads, M/N KR8060, S/N 424 w/ Hammer Attach. •
- 1987 Krupp DHR-30-1 Crawler Rotary Drill Rig, 12" Pads, S/N 80170 •
- 1986 Krupp DHR-80-A1 Crawler Rotary Drill Rig, 12" Pads, S/N 80152 •
- 1986 Krupp DHR-80-A1 Crawler Rotary Drill Rig, 12" Pads, S/N 7961 •
- 1978 Longyear P38 Crawler Drill Rig, 10" Pads, S/N 1D480634 •
- 1974 John Deere 450C Crawler rotary Drill Rig, 6' Digging Bucket, 20" Pads, 54' Boom, S/N 214390 •
- 1973 Aardvark 100 Crawler Rotary Drill Rig, 16" Pads, S/N 78-100-102 •

CONCRETE PUMPS

- 1994 Allentown P40 Tag-A-Long Powercrete, S/N 574094 •
- 1991 Acker Tag-A-Long Colcrete, S/N 6227643 •
- 1991 Allentown P40 Tag-A-Long Powercrete, S/N 4440 •

JET PUMP & MIXER

- 1994 Elettari Gootenier Jet Pump & Mixer w/ Hopper, Mixer Tank & Techniwell Pump •

LOADER/BACKHOE

- Ford 4500 Loader/Backhoe 72" GP Bucket •

COMPRESSORS

- Worthington 165 Compressor, S/N C"OM-920-200 •
- 1999 Ingersoll-Rand Tag-A-Long Compressor, M/N P375, S/N 296985 •
- 1997 Ingersoll-Rand Tag-A-Long Compressor, M/N P375, S/N 282874 •
- 1995 Ingersoll-Rand Tag-A-Long Compressor, M/N XP750, S/N 257711 •
- 1995 Ingersoll-Rand Tag-A-Long Compressor, M/N P185WKD, S/N 257053 •
- 1995 Ingersoll-Rand Tag-A-Long Compressor, M/N P375, S/N 255936UDF410 •
- 1996 Ingersoll-Rand Tag-A-Long Compressor, M/N 825, S/N 270339 •

WELDERS

- (2) Miller Multi-Operator DC Arc Welders, M/N MARK VIII-2 •
- Lincoln Tag-A-Long Arc Welder, M/N SA-250D3, S/N A1068723 •
- Multiquip AC/DC Tag-A-Long Welder/Generator, Mod. BLW-300SS •
- (2) Miller Big Blue 251D DC Arc Welders, Diesel •
- Miller Deltaweld 652 Port. CC/DC Weld Source w/ Feeder •
- Miller Dimension 302 CC/CV-DC Welder w/ Feeder •
- Miller 225 CC/CV-AC/DC Generator/Welder •
- Miller Dialarc 250 AC/DC Welder •
- Airco 250 Amp Port. AC/DC Welder •
- Airco 200 Amp Port. DC Welder •
- Lincoln Idealarc 250 Amp AC Arc Welder •

GENERATOR

- 1995 CAT Port. Generator, 75KV, S/N 87368 •

TRACTOR

- 1995 Kenworth Tri-Axle Tractor, 18 Sp. Fuller Trans., 46000# Rears, Wet Sys. •

TRAILERS

- 1994 Talbert 50 Ton, 48' Tri-Axle Gooseneck Trailer, 23' Deck •
- 1986 Rogers 35 Ton, 41' T/A Gooseneck Trailer •
- 1999 Mid-Atlantic T/A Exp. Split Pole Trailer •
- 1981 Eagle 18' x 8' Utility Trailer, Tri-Axle •



1996 IR ECM350 DRILL RIG



1989 KLEMM KR8060 DRILL RIG



1974 JOHN DEERE 450C DRILL RIG



1973 AARDVARK 100 DRILL RIG



FULL VIEW OF
1996 CAT D3C-LGP DRILL RIG





2001 IH FLATBED



2001 IH FLATBED



1999 FORD F450 FLATBED



1997 FORD F-SUPER FLATBED



1995 KENWORTH TRACTOR



1994 TALBERT TRAILER



1995 IR XP750 CFM COMPRESSOR



1995 IR 375 CFM COMPRESSOR



FORD 4500 LOADER-BACKHOE



FLATBED TRUCKS

- 2001 I.H. 4700 DT466E, 12' Flatbed Truck, 6 Sp. Trans., Diesel, Dual Rears, Ext. Cab.
- 2001 I.H. 4700 DT466E, 12' Flatbed Truck, 6 Sp. Trans., Diesel, Dual Rears
- 1999 Ford F450 Super Duty, 12' Flatbed Truck, 5 Sp. Man., Diesel, AM/FM Stereo
- 1999 Ford F450 XL Super Duty, 11' Flatbed Truck, 5 Sp. Man., Diesel, AM/FM Stereo
- 1997 Ford F450 Super Duty, 12' Flatbed Truck, 5 Sp. Man., Diesel, AM/FM Stereo
- 1997 Ford FXL Super Duty, 12' Flatbed Truck, 5 Sp. Man., Diesel, Dual Tanks, AM/FM Stereo
- 1997 Ford F Super Duty, Power Stroke Diesel, 11' Flatbed Truck, AT, AM/FM Stereo

PICKUP TRUCKS

- 2000 Ford F150 XL Triton, Crew Cab Pickup Truck, AT, AC, Cruise
- 2000 Ford F150 XL Pickup Truck, 5 Sp. Man., A/C, AM/FM Stereo
- 2000 Ford F150 XLT Triton, Super Crew Cab Pickup Truck, AT, A/C, PW, PL, AM/FM
- 1999 Ford F250 Super Duty Pickup Truck, AT, A/C, AM/FM Stereo

UTILITY TRUCK

- 1995 Ford F Power Stroke Diesel Super Duty, 11' Utility Truck, AT w/ Miller Arc Welder & Vert. Air Compr.

AUTOMOBILES

- 2001 Pontiac Bonneville, 4 Dr. Sedan, Full Power, AT, A/C
- 1999 Ford Taurus Station Wagon, AT, AM/FM Stereo Cassette

FORKLIFT

- Yale Forklift, 10,000# Cap., LPG, 2-Stage Mast, Sol. Tires, Mod. G83C

MISCELLANEOUS TOOLS & EQUIPMENT

- (3) Landa, Hotsy & Karcher Port. Pressure Washers • John Deere Hydra 175 Riding Lawn Tractor
- (4) Double Drum Grout Mixers, Air & Hyd. • Casagrande Carousel • Kelly Bars
- (5) Ass't Steel Casings, Ass't Diam.'s & Lengths • Core Drills • Augers • Drill Pipe Ext.'s & Bits
- 26' Load Test Beams • Steel Dump Hoppers • LoDril Hyd. Pile Drill Attachment
- Ass't Booms & Digging Buckets • Multiquip MGE6700 Generator • Coleman 6250 Generator
- Mudsuckers • Concrete Vibrators • Water & Sub Pumps • Prop. Heaters
- (2) Berger Transits Mod. BET-30 & AK32 w/ Tripods • (30) Pneu. Hammers
- Pneu. & Elec. Drills, Sanders, Grinders & Polishers • (2) Wright Prec. Power Saws
- Chop, Masonry, Chain & Circular Saws • Pipe Cutters, Reamers & Wrenches • Tripod Pipe Vises
- (6) Cut & Weld Outfits • Automotive Tools • Port. Battery Chargers • Micrometers • Calipers
- Sockets Sets • Punches • Port-O-Powers • MSA Air Mask Sys. • Air & Pipe Tanks Gages
- Port. Strapping Mach.'s • Cables, Slings, Come-A-Longs, Pullers, Lifting Hooks, Chain & Grip Hoists, Cable & C-Clamps, Vises, Rope, Shovels, Rakes, Etc., Etc. • Port. Lube Units • Hyd. Pallet Jacks
- Shop Vac.'s • Ladders • Barrel Stands • Shop Fans • (12) Knaack Gang Boxes • Port. Tool Boxes
- Parts Cabinet • Welding Tables • Fire Ext.'s • 150' Hyd. Steel Pallet Racking
- Steel Stock Racks • Workbenches • Etc. • Etc.

★ Gd. Qty. Steel Plate, I & H Beams ★

SHOP MACHINES

- Troglia 16" x 40" B.C. Engine Lathe, Mod. TPL 40 • Southbend 13" x 30" B.C. Engine Lathe
- Delta 10" Table Saw • Delta 10" Radial Arm Saw • Marvel #8 Vert. Met. Band Saw
- Makita 10" Mitre Saw • Delta 10" Disc Sander • D.E. Bench Grinders
- DeVilbiss Vert. Air Compr., 5 H.P., 3 Ph. • Gardner Denver Twin Cyl. Air Compr., 10 H.P., 3 Ph.
- Dayton Vert. Air Compr., 5 H.P., 3 Ph. • Etc. • Etc.

INVENTORY - NEW

- Lg. Qty. Hyd. Parts • Hyd. Pistons • Welding Supplies & Cable • Plastic Tubing
- Chain Saw Supplies & Parts • Grinding Wheels • Lg. Qty. Drill Bits & Points • Tie Back Cable
- Gd. Qty. Rain Suits & Boots • Hard Hats • Water & Air Hoses • Air Filters • Dust Masks • Gaskets
- Gd. Qty. Fasteners w/ Cabinets • Etc. • Etc.

OFFICE MACHINES

- Comdial Phone Sys. w/ Voicemail & (15) Handsets • HP DeskJet Plotter, M/N 450C
- Ozalid Blueprint Copier, M/N 1955PV • Xerox Copier, M/N 5320 • Konica Fax Machine, M/N 9925
- IBM Thinkpad Laptop 600X • (11) Ass't P.C.'s w/ Monitor, Keyboard & Mouse • (5) Ass't HP Printers, 5P, 2100, 3100, 3105 • HP OfficeJet Copier, Scanner, Printer & Fax • HP ScanJet Scanner XPA
- GBC 70S Schreadmaster Shredder • Canon C200Z Digital Camera • InFocus Projector • Color TV
- Calculators • Etc. • Etc.

OFFICE FURNISHINGS

- 10' Wood Conference Table w/ 8 Exec. Chairs • 5' & 8' Formica Conference Tables
- (5) Modular Workstations w/ Pedestals & Shelves • Desks • Folding Tables • Sec. & Exec. Chairs
- (2) Draftsmen's Tables • (2) 5D Met. Blueprint Cabinets • (20) 2D, 4D & 5D File Cabinets
- Met. Storage Cabinets • Bookcases • Brinks 1D Safe • (3) Microwaves
- Soda Vending Mach. w/ Bill Changer • Refrigerator • Etc. • Etc.



1995 FORD UTILITY TRUCK



2000 FORD F150 PICKUP



2000 FORD F150 PICKUP



1999 FORD F250 PICKUP



1999 FORD TAURUS WAGON



1932 N. CONGRESS AVENUE
WEST PALM BEACH, FLORIDA

TO BE SOLD ON THE PREMISES
SATURDAY, DECEMBER 4TH
AT 11:00 A.M.

INSPECTION:
FRIDAY, DECEMBER 3RD – 10:00 A.M. TO 4:00 P.M.
& MORNING OF SALE – 8:30 A.M. TO 11:00 A.M.

AIRPORT:
PALM BEACH INTERNATIONAL AIRPORT (PBI)
PALM BEACH, FL APPROX. 2 MILES TO AUCTION SITE

LODGING:
MARRIOTT – (APPROX. 2 MILES TO SITE)
W. PALM BEACH, FL 800-228-9290
RADISSON INN – (APPROX. 2 MILES TO SITE)
W. PALM BEACH, FL 561-689-6888
COURTYARD – (APPROX. 2 MILES TO SITE)
W. PALM BEACH AIRPORT 800-321-2211

DIRECTIONS:
FROM PALM BEACH INT'L AIRPORT – PROCEED SOUTHEAST ONTO TURNAGE BLVD TOWARD INT'L AIRPORT APPROX. 0.8 MILES; TURN SLIGHT RIGHT ONTO ARRIVALS/DEPARTMENTS APPROX. 0.3 MILES; TURN SLIGHT RIGHT ONTO AIRPORT EXIT APPROX. 0.1 MILE; STAY STRAIGHT TO GO ONTO N CONGRESS AVE. (WATCH FOR AUCTION SIGNS).

TERMS & CONDITIONS:
EVERYTHING SOLD "AS IS/WHERE IS"

TERMS OF SALE:
25% DEPOSIT AT TIME OF SALE BY CASH OR CERTIFIED OR BANK WIRE TRANSFER. 10% BUYERS PREMIUM APPLIES. PERSONAL OR COMPANY CHECK ACCEPTED ONLY IF ACCOMPANIED WITH A BANK LETTER GUARANTEEING PAYMENT. EXAMPLE OF BANK LETTER OF GUARANTEE: THIS BANK GUARANTEES PAYMENT TO AARON POSNIK & CO., INC. ON ACCOUNT # _____ UP TO THE AMOUNT OF \$ _____ FOR PURCHASES MADE AT THE SPENCER, WHITE & PRENTIS FOUNDATION CORPORATION AUCTION TO BE HELD ON SATURDAY, DECEMBER 4TH. NO PURCHASE REMOVED UNTIL COMPLETE SETTLEMENT IS MADE. OTHER TERMS TO BE ANNOUNCED AT TIME OF SALE.

SALES TAX:
FLORIDA SALES TAX LAWS APPLY.
DEALERS BRING COPY OF EXEMPT CERTIFICATE.

BID BY MAIL:
IF YOU CANNOT ATTEND THIS AUCTION IN PERSON WE WILL BE HAPPY TO RECEIVE YOUR BID ON THE ITEMS THAT YOU DESIGNATE (IF YOUR BID IS SENT BY MAIL OR FAX AND RECEIVED BY OUR OFFICE AT LEAST 24 HOURS PRIOR TO THE COMMENCEMENT OF THE SALE). IF YOU WISH TO BID BY MAIL, KINDLY PROVIDE A COMPLETE LIST OF THE ITEMS DESIRED AND ENCLOSE A 25% DEPOSIT BY CERTIFIED CHECK. YOU WILL BE RESPONSIBLE FOR PURCHASES IF YOU ARE THE HIGH BIDDER, UNDER THE TERMS AND CONDITIONS TO BE ANNOUNCED AT TIME OF SALE. IF YOU ARE THE SUCCESSFUL BIDDER, WE WILL NOTIFY YOU WITHIN 24 HOURS OF THE SALE AND YOU MUST MAKE PAYMENT OF THE BALANCE DUE BY WIRE TRANSFER TO OUR BANK WITHIN 24 HOURS OF NOTIFICATION. IF YOU ARE UNSUCCESSFUL IN YOUR BID, YOUR DEPOSIT WILL BE RETURNED TO YOU WITHIN 72 HOURS OF THE SALE.

IMPORTANT NOTICE:
THE INFORMATION DESCRIBED IN THIS BROCHURE IS CORRECT TO THE BEST OF OUR KNOWLEDGE BUT WE CANNOT GUARANTEE SAME. IT IS FOR THIS REASON THAT BUYERS SHOULD AVAIL THEMSELVES OF THE OPPORTUNITY FOR INSPECTION PRIOR TO THE SALE.

SALE PER ORDER OF SECURED PARTY
RANDALL L. SOUZA, ESQ.
OF THE FIRM OF NIXON PEABODY LLP
ONE CITIZENS PLAZA, PROVIDENCE RI
ATTORNEYS FOR SECURED PARTY

PAUL W. SCHEER, AUCTIONEER FLORIDA AUC. LIC. # AU-2304



1994 IH TRACTOR



1975 AARDVARK CRAWLER DRILL RIG



2002 JCB 214E LOADER

DRILL RIGS

- 1997 Soilmec R312HD Crawler Drill Rig, S/N 14281CFA w/ 2003 CFA Attachment, 20" Pads, 48' Drill Max •
- 1997 Soilmec R312HD Crawler Drill Rig, S/N 1345, 20" Pads, 48' Drill Max •
- 1978 CAT235C Crawler Drill Rig, 20" Pads, 36' Stroke, S/N 32K1869 w/ 1994 Hydrostatic Pile Driver Attach. •
- 1975 Aardvark 125 Crawler Drill Rig, 12" Pads, S/N 125-01 •

TORQUE DRILL

- 2000 ICE 55 Auto. Torque Drill, S/N 46004U •

HAMMERS

- Tramac 750 Hyd. Hammer • McKierman-Terry 9B3 Pile Hammer Attach. •

CRANES

- Manitowoc 2900WC Crawler Crane, 30" Pads, S/N 29510 •
- Manitowoc 2900 Truck Crane, S/N 29080 •
- Bucyrus Erie 22B Crawler Crane, 30" Pads, S/N 12390 •

CONCRETE PUMPS

- 1998 Putzmeister Tag-A-Long Concrete Pump, S/N 219806UT608 •
- 2000 Olin 575CA Tag-A-Long Concrete Pump, S/N 8F4M1012 •
- 2000 Olin 575 Concrete Pump, S/N 575008 •

LOADER/BACKHOE

- 2002 JCB 214E Loader/Backhoe, S/N SLP214TCYE0490816 •

FORKLIFT

- 1990 Lull 644 Boom Forklift w/ 18'-20' Telescopic Boom, S/N 1D2825N •

MANLIFT

- 1989 Snorkel TB-A50 Manlift, 50' Telescopic Boom, S/N 968071196 •

ARC WELDERS

- Lincoln Commander 400 Tag-A-Long Arc Welder •
- Miller Big Blue 251D Tag-A-Long Arc Welder, 30 KVA, S/N KE663960 •

TRACTOR

- 1994 IH 9400 Tri-Axle Tractor Truck •

TRAILERS

- 2000 Witzco Lowboy Trailer, 50 Ton Cap. •
- 1979 Fruehauf 40 Expandable T/A Flatbed Trailer •
- 16' T/A Utility Trailer •

PICKUP TRUCKS

- (2) 2003 Ford F150 Super Cab XL Pickups •
- 2002 Ford F150 Super Cab XL Pickup •
- 2001 Ford F250 Super Cab XL Pickup w/ Hobart Champion Welder/Generator •
- 2000 Ford F250 Super Duty Pickup •

MISCELLANEOUS EQUIPMENT

- 1999 ICE 325 Power Unit, S/N 18105 • (3) Ass't ICE Box Leads •
- (5) Ass't 30' Storage Containers • Augers • Pullers • Cable • Slings •
- Fuel Tanks • Tool & Gang Boxes • Ladder Booms •
- Steel Plate & I-Beam • Etc. •



1999 SNORKEL MANLIFT



CAT 235C DRILL RIG



1998 PUTZMEISTER SHOTCRETE PUMP

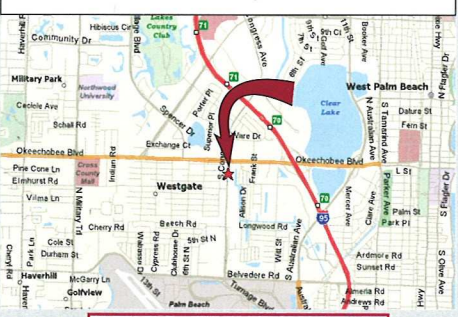


1997 SOILMEC R312HD CRAWLER DRILL RIG

CRANE LOCATED AT:

1155 CENTRAL FLORIDA PARKWAY, ORLANDO, FLORIDA

TO BE SOLD BY DIGITAL IMAGE ON SATURDAY, DECEMBER 4TH
FROM WEST PALM BEACH AUCTION SITE



Equipment financing available!



160 ROUTE 94
LAFAYETTE, NEW JERSEY

TO BE SOLD ON THE PREMISES
THURSDAY, DECEMBER 2ND
AT 11:00 A.M.

INSPECTION:

WEDNESDAY, DECEMBER 1ST – 10:00 A.M. TO 4:00 P.M.
& MORNING OF SALE – 8:30 A.M. TO 11:00 A.M.

AIRPORT:

NEWARK LIBERTY INT'L AIRPORT (EWR), NEWARK, NJ
APPROX. 50 MILES TO AUCTION SITE

LODGING:

COMFORT SUITES – (APPROX. 13 MILES TO SITE)

MT. ARLINGTON, NJ 973-770-7880

HOLIDAY INN EXPRESS – (APPROX. 13 MILES TO SITE)

MT. ARLINGTON, NJ 866-270-5110

COURTYARD BY MARRIOTT – (APPROX. 13 MILES TO SITE)

MT. ARLINGTON, NJ 973-770-2000

DIRECTIONS:

FROM NEWARK LIBERTY INT'L AIRPORT – TAKE I-78 W TOWARDS GARDEN STATE PARKWAY/CLINTON APPROX. 9 MILES; MERGE ONTO NJ-24 2 – EXIT #48 TOWARDS I-287/SPRINGFIELD/MORRISTOWN APPROX. 9.8 MILES; MERGE ONTO I-287 N TOWARDS I-80/MAHWAH APPROX. 4.2 MILES; MERGE ONTO I-80 W – EXIT #41B TOWARDS DEL WATER GAP APPROX. 9.5 MILES; MERGE ONTO NJ-15 N – EXIT #34B TOWARDS JEFFERSON/SPARTA APPROX. 15.2 MILES; TURN SLIGHT LEFT ONTO NJ-94/MORRIS FARM RD. CONTINUE TO FOLLOW NJ-94 APPROX. 0.6 MILES. (WATCH FOR AUCTION SIGNS).

TERMS OF SALE:

25% DEPOSIT AT TIME OF SALE BY CASH OR CERTIFIED OR BANK WIRE TRANSFER. 10% BUYERS PREMIUM APPLIES. PERSONAL OR COMPANY CHECK ACCEPTED ONLY IF ACCOMPANIED WITH A BANK LETTER GUARANTEEING PAYMENT. EXAMPLE OF BANK LETTER OF GUARANTEE: THIS BANK GUARANTEES PAYMENT TO AARON POSNIK & CO., INC. ON ACCOUNT # _____ UP TO THE AMOUNT OF \$ _____ FOR PURCHASES MADE AT THE SPENCER, WHITE & PRENTISS FOUNDATION CORPORATION AUCTION TO BE HELD ON THURSDAY, DECEMBER 2ND. NO PURCHASE REMOVED UNTIL COMPLETE SETTLEMENT IS MADE. OTHER TERMS TO BE ANNOUNCED AT TIME OF SALE.

SALES TAX:

NEW JERSEY SALES TAX LAWS APPLY.
DEALERS BRING COPY OF EXEMPT CERTIFICATE.

BID BY MAIL:

IF YOU CANNOT ATTEND THIS AUCTION IN PERSON WE WILL BE HAPPY TO RECEIVE YOUR BID ON THE ITEMS THAT YOU DESIGNATE (IF YOUR BID IS SENT BY MAIL OR FAX AND RECEIVED BY OUR OFFICE AT LEAST 24 HOURS PRIOR TO THE COMMENCEMENT OF THE SALE). IF YOU WISH TO BID BY MAIL, KINDLY PROVIDE A COMPLETE LIST OF THE ITEMS DESIRED AND ENCLOSE A 25% DEPOSIT BY CERTIFIED CHECK. YOU WILL BE RESPONSIBLE FOR PURCHASES IF YOU ARE THE HIGH BIDDER, UNDER THE TERMS AND CONDITIONS TO BE ANNOUNCED AT TIME OF SALE. IF YOU ARE THE SUCCESSFUL BIDDER, WE WILL NOTIFY YOU WITHIN 24 HOURS OF THE SALE AND YOU MUST MAKE PAYMENT OF THE BALANCE DUE BY WIRE TRANSFER TO OUR BANK WITHIN 24 HOURS OF NOTIFICATION. IF YOU ARE UNSUCCESSFUL IN YOUR BID, YOUR DEPOSIT WILL BE RETURNED TO YOU WITHIN 72 HOURS OF THE SALE.

IMPORTANT NOTICE:

THE INFORMATION DESCRIBED IN THIS BROCHURE IS CORRECT TO THE BEST OF OUR KNOWLEDGE BUT WE CANNOT GUARANTEE SAME. IT IS FOR THIS REASON THAT BUYERS SHOULD AVAIL THEMSELVES OF THE OPPORTUNITY FOR INSPECTION PRIOR TO THE SALE.

SALE PER ORDER OF SECURED PARTY
RANDALL L. SOUZA, ESQ.

OF THE FIRM OF NIXON PEABODY LLP
ONE CITIZENS PLAZA, PROVIDENCE RI
ATTORNEYS FOR SECURED PARTY



1999 INTEROC DRILL RIG



1999 CAT DRILL RIG



1999 PUTZMEISTER SHOTCRETER PUMP

DRILL RIGS

- 1999 Interroc AN109B (HR60) Crawler Rotary Drill Rig, S/N 9099/250, 25' Boom, 16" Pads •
- 1999 CAT 336 Crawler Rotary Drill Rig, S/N 5G500382, 50' Boom, 8' Straight Blade, 25" Pads •
- 1995 Davey Kent DK50RA Crawler Rotary Drill Rig, S/N 12693 w/ 2002 Hutte 35HG-1500 Drill Head •
- 1987 CAT 225LC Drill Rig, 30" Pads, 10" Stick w/ 1994 Lodril Hyd. Pile Drive Attach. #LLM40 •

EXCAVATOR

- 1996 CAT 330BL Crawler Excavator, 10' Stick, 33" Pads, S/N 6DR00653 •

LOADER BACKHOE

- John Deere 450B Crawler Loader/Backhoe, S/N 118857T, GP Bucket, 24" Digging Bucket •

MANLIFT

- 1998 Genie S-40 4X4 Manlift, 40' Telescopic Boom, S/N 1359 •

FORKLIFT

- Komatsu 8500# Cap. Forklift, LPG, 3-Stage Mast, Sol. Tires, Dual Front Wheels, M/N FG45T, S/N 041264A •

COMPRESSORS

- (2) 1999 I.R. 375 CFM Air Compressor •
- 1993 I.R. 185 CFM Air Compressor •
- 1982 LeRoi 750 CFM/350 Psi Air Compressor •

WELDERS

- MQ Power Tag-A-Long Diesel DC Welder, M/N BLW-400SSW, S/N 4792841 •
- Miller Tag-A-Long Arc Welder, Mod. TrailBlazer 301G, S/N LC304808 •
- Miller Tag-A-Long Welder/Generator Mod. Big Blue, S/N KE709510 •

PICKUP TRUCKS

- 2001 Ford Explorer Sport Trac Pickup Truck, AT, AC, AM/FM Stereo w/ CD Player •
- 2001 Ford F250 Pickup Truck, Ext. Cab, Utility Rack, AT, AC •
- 2001 Ford F150 Super Cab XL Pickup Truck, AT, AC, AM/FM Stereo, Diamond Plate Tool Box •
- 1999 Ford F250 XL Pickup Truck, AT, AC, AM/FM Stereo •

FLATBED TRUCK

- 1997 Ford F-Super Duty 14' Flatbed Truck, AT, AC, AM/FM Stereo •

UTILITY TRAILER

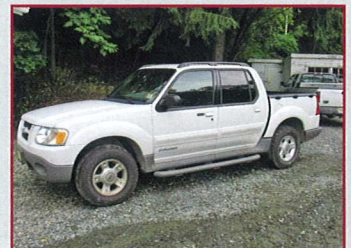
- 1999 Mid Atlantic 14' x 7' Tag-A-Long T/A Utility Trailer •

MISCELLANEOUS EQUIPMENT

- Met. Storage Containers • Gang Boxes • Ass't Hand Tools •
- Machine Parts • Cable • Parts Cabinets •
- Steel Pipe, Plate, Beams, Etc., Etc. •



2001 FORD F150 PICKUP



2001 FORD EXPLORER PICKUP



1999 FORD F450 FLATBED



GENIE S-40 MANLIFT



SECURED PARTY SALE BY

PUBLIC AUCTION

NOV. 30TH • DEC. 2ND • DEC. 4TH

STARTING AT 11:00 AM EACH DAY

- 3 DAYS • 3 LOCATIONS •
- MASSACHUSETTS • NEW JERSEY • FLORIDA •
- GEOTECHNICAL ENGINEERING**
- AND
- FOUNDATION CONTRACTOR**
- DRILLING MACHINES • CRANES •
- EXCAVATOR • BACKHOES • CONCRETE PUMPS •
- COMPRESSORS • WELDERS • GENERATORS •
- FORKLIFTS • MANLIFTS • TRUCK TRACTORS •
- TRAILERS • PICKUP, UTILITY & FLATBED TRUCKS •
- CONTRACTORS EQUIPMENT • HAND TOOLS •
- INVENTORY • OFFICE MACHINES & FURNISHINGS •



SALE PER ORDER OF SECURED PARTY
 RANDALL L. SOUZA, ESQ.
 OF THE FIRM OF NIXON PEABODY LLP, ONE CITIZENS PLAZA, PROVIDENCE RI
 ATTORNEYS FOR SECURED PARTY

TERMS OF SALE: 25% DEPOSIT CASH OR CERTIFIED CHECK
 10% BUYERS PREMIUM APPLIES
 OTHER TERMS TO BE ANNOUNCED AT TIME OF SALE

Aaron Posnik

AUCTIONEERS • APPRAISERS

Aaron Posnik & Co., Inc.
 83 State Street
 Springfield, MA 01103

First Class Mail
 U.S. POSTAGE
 PAID
 Permit No. 12
 Springfield, MA

RETURN SERVICE REQUESTED

MA Auc. Lic. #161
 PA Auc. Lic. #AU-0038-R
 FL Auc. Lic. #AB1697
 Est. 1932

Visit our Website @ www.posnik.com

Aaron Posnik & Co., Inc.
 83 State Street • Springfield, MA 01103
 (413) 733-5238 (Fax) 731-5946

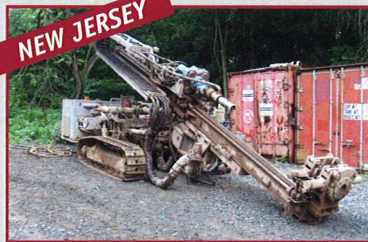
Aaron Posnik & Co., Inc.
 5 Great Valley Parkway, Suite 244 • Malvern, (Philadelphia) PA 19003
 (610) 853-6655 (Fax) 853-6633

• 3 DAYS • 3 LOCATIONS •

- NOVEMBER 30TH • SWANSEA, MASSACHUSETTS
- DECEMBER 2ND • LAFAYETTE, NEW JERSEY
- DECEMBER 4TH • WEST PALM BEACH, FLORIDA



LULL 644 FORK TRUCK



1999 INTEROC DRILL RIG



DAVEY KENT DK515 DRILL RIG

TO BE SOLD ON THE PREMISES

- DRILLING RIGS
- CRANES
- EXCAVATORS
- BACKHOES
- CONCRETE PUMPS
- COMPRESSORS
- WELDERS
- GENERATORS
- FORKLIFTS
- TRACTOR
- TRAILERS
- TRUCKS