

*2 Day*

# A PUBLIC AUCTION

- PAPER BOX MACHINERY MANUFACTURER •
- MACHINE TOOLS •
- CNC MACHINING AND TURNING CENTERS •
- MILLERS • BORING & PLANER MILLS • LATHES •
- SAWS • GRINDERS • DRILLS • WELDERS • COMPRESSORS •
- METALWORKING MACHINES • WOODWORKING MACHINES •
- FORKLIFTS • BRIDGE CRANES • VEHICLES •
- INSPECTION EQUIPMENT • TOOLING • PLANT SUPPORT EQUIPMENT •
- GLUER & FOLDER-GLUER MACHINES & PARTS • STEEL STOCK •
- OFFICE MACHINES & FURNISHINGS •

ASSETS NO LONGER NEEDED BY THE NEW OWNERS OF



**I N T E R N A T I O N A L**

**THE INTERNATIONAL PAPER BOX MACHINE CO., INC.**

**90 NORTHEASTERN BOULEVARD NASHUA, NEW HAMPSHIRE**

**TO BE SOLD ON THE PREMISES**

**WEDNESDAY & THURSDAY, MAY 21<sup>ST</sup> & 22<sup>ND</sup>**

**STARTING AT 10:30 A.M. EACH DAY**

**INSPECTION: TUESDAY, MAY 20<sup>TH</sup> – 10:00 AM TO 4:00 PM  
& MORNING OF EACH SALE – 8:30 AM TO 10:30 AM**



**MAZAK ULTRA 550 CNC HORIZONTAL MACHINING CENTER**

Visit our Website @ [www.posnik.com](http://www.posnik.com)

**Aaron Posnik**

AUCTIONEERS • APPRAISERS

Est. 1932

MA Auc. Lic. #161 • PA Lic. #AU-0038-R

Aaron Posnik & Co., Inc.  
83 State Street • Springfield, MA 01103  
(413) 733-5238 (Fax) 731-5946

Aaron Posnik & Co., Inc.  
5 Great Valley Parkway, Suite 244 • Malvern, (Philadelphia) PA 19003  
(610) 853-6655 (Fax) 583-6633

# A PUBLIC AUCTION

**MACHINERY, EQUIPMENT & INVENTORY  
NO LONGER NEEDED BY THE NEW OWNERS OF**

**I** **INTERNATIONAL**

**THE INTERNATIONAL PAPER BOX  
MACHINE CO., INC.**

**90 NORTHEASTERN BOULEVARD NASHUA, NEW HAMPSHIRE**

**TO BE SOLD ON THE PREMISES**

**WEDNESDAY & THURSDAY**

**MAY 21st & 22nd**

**STARTING AT 10:30 A.M. EACH DAY**

**INSPECTION:**

TUESDAY, MAY 20<sup>th</sup> 10:00 A.M. TO 4:00 P.M.

WEDNESDAY, MAY 21<sup>st</sup> 8:30 A.M. TO 10:30 A.M.

THURSDAY, MAY 22<sup>nd</sup> 8:30 A.M. TO 10:30 A.M.

**AIRPORT:**

**LOGAN INTERNATIONAL AIRPORT**

BOSTON, MA 1-800-23-LOGAN

**MANCHESTER AIRPORT**

MANCHESTER, NH 1-603-624-6539

**DIRECTIONS:**

**FROM LOGAN INTERNATIONAL AIRPORT** - (APPROX. 44 MILES TO SITE) TAKE I-95 S./MA-128 S. TOWARDS WALTHAM. TAKE EXIT #32B, US-3 N./ MIDDLESEX TPK. TOWARDS LOWELL. MERGE ONTO US-3 N. TAKE EXIT #4 TOWARDS E. DUNSTABLE RD./F.A.A. CENTER. TAKE THE E. DUNSTABLE RD. RAMP TOWARD F.A.A. CENTER. TURN LEFT ONTO E. DUNSTABLE RD. TURN RIGHT ONTO HARRIS RD. TURN SLIGHT RIGHT ONTO NORTHEASTERN BLVD. WATCH FOR AUCTION SIGNS.

**FROM MANCHESTER AIRPORT** - (APPROX. 18 MILES TO SITE) START NORTH ON BROWN AVE./NH-3A TOWARD CASCADE CIR. MERGE ONTO NH-101 W. VIA RAMP ON LEFT TOWARD BEDFORD/NASHUA. TAKE EVERETT TPK SOUTH EXIT TOWARD MERRIMACK/NASHUA. MERGE ONTO FREDERICK E. EVERETT TPK. FREDERICK E. EVERETT TPK. BECOMES US-3 S. TAKE EXIT #5W , RT.-111 W. TOWARDS PEPPERELL, MA. RAMP BECOMES NH-111A. TURN LEFT ONTO NORTHEASTERN BLVD. WATCH FOR AUCTION SIGNS.

FOR DIRECTIONS FROM ALBANY, NY; HARTFORD, CT; SPRINGFIELD, MA; WORCESTER, MA; PROVIDENCE, RI AND PORTSMOUTH, NH PLEASE VISIT OUR WEB SITE AT [WWW.POSNIK.COM](http://WWW.POSNIK.COM)

**LODGING:**

**HOLIDAY INN, NASHUA, NH 1-603-888-1551**

**SHERATON NASHUA HOTEL, NASHUA, NH 1-603-888-9970**

**CROWN PLAZA, NASHUA, NH 1-603-886-1200**

**WESTERN SLOPE INDUSTRIES, INC.**

2224 Pinesight Circle Grand Junction, CO 81505-1818  
Serving the Converting Industry

May 1, 2002

Mr. Paul W. Scheer  
President  
Aaron Posnik & Co.  
83 State Street  
Springfield, MA 01103

Subject: International Paper Box Machine Company

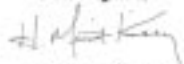
Dear Mr. Scheer:

This letter will serve as authorization for your firm, Aaron Posnik & Co., to sell certain assets no longer needed for the continuing operations of the International Paper Box Machine Company, Inc. for its new location in Grand Junction, Colorado.

These assets include all machinery and equipment, inventory, folder-gluer machines, packing equipment, and parts for IPBM™ machines.

The auction is to be conducted with no reserve, and the sale date(s) should be May 21 and May 22, 2002

Best Regards,



H. Merritt Kinsey  
President



**OKUMA LC-40 CNC TURNING CENTER**



**MORI-SEIKI SL-4 CNC TURNING CENTER**



**HURCO VERTICAL CNC MACHINING CENTER**



**HURCO VERTICAL CNC MACHINING CENTER**



TOYODA HORIZONTAL MACHINING CENTER



HARRISON ENGINE LATHE



HANKOOK ENGINE LATHE

## MACHINERY & EQUIPMENT TO BE SOLD DAY 1 - WEDNESDAY

### CNC HORIZONTAL MACHINING CENTERS

- Mazak Ultra 550 CNC Horiz. Machining Center, S/N 115476 w/ 5 Pallet Changing Table, 64 Pos. Auto Tool Changer, Mazak CNC Controls (New 1995)
- Toyoda FHN-4011 CNC Horiz. Machining Center, S/N NM5876, 32 Pos. Auto Tool Changer, 1° Indexing, 24" x 22" x 19" Travel w/ 2 Pallet Style Tables, Fanuc 6M CNC Controls w/ Tooling
- K & T Milwaukee-Matic EA Horiz. Machining Center, S/N 83-0008-07 w/ Pow. Feed, Indexing Tab, Remote NC Controls
- K & T VMC 660 Vertomatic 4500 Horiz. Machining Center, S/N 60126 w/ AB NC Controls & Tooling

### CNC VERTICAL MACHINING CENTERS

- Okuma & Howa 4VA Vert. CNC Machining Center, S/N 02075 w/ 25 Pos. Auto Tool Changer w/ 16" x 28" Pow. Table, Fanuc 6M CNC Controls & Tooling
- Hurco BMC30HT/M Vert. CNC Machining Center, S/N QT9W3915R w/ 24 Pos. Auto Tool Changer, Hurco Ultimac CNC Controls & Tooling
- Hurco BMC25 Vert. CNC Machining Center, S/N BP9001081K w/ 24 Pos. Auto Tool Changer, 16" x 24" Pow. Table, Hurco Ultimac CNC Controls & Tooling
- Hurco BMC20 Vert. CNC Machining Center, S/N BN-9003090A w/ 16 Pos. Auto Tool Changer, 16" x 34" Pow. Table, Hurco Ultimac II CNC Controls & Tooling
- Hurco BMC20LR Vert. CNC Machining Center, S/N ZA9003111E w/ 16 Pos. Auto Tool Changer, 16" x 34" Pow. Table, Hurco Ultimac II CNC Controls & Tooling

### CNC TURNING CENTERS

- Yamazaki Mazak CNC Turning Center, Mod. SQT-30M, S/N 114532 (New 1994) w/ 12" Chuck, 12 Pos. Turret, Tooling, Mazak Mazatrol T-PL CNC Controls & Tooling w/ Chip Conveyor
- Okuma LC-40 CNC Turning Center, S/N 6303-1557 w/ Programmable Tail Stock, 15" Chuck, 12 Pos. Turret, Okuma OSP5000LG CNC Controls & Tooling w/ Henning 1100M Chip Conveyor
- Mori-Seiki SL-4 CNC Turning Center, S/N 442 w/ Man. Tail Stock, 8 Pos. Turret, 12" Chuck w/ Yasnac CNC Controls & Tooling
- Mazak QT-28N-U CNC Turning Center, S/N 87819 (New 1994) 15 Station Turret, Programmable Tail Stock, 2.625 Cap. Collet Chuck, w/ LNS Hydrobar Bar Feeder, 6 Bar Cap., Mazak Mazatrol T32-2 CNC Controls & Tooling

### HORIZONTAL BORING MILL

- G & L 340T Horiz. Boring Mill, 4" Spindle, 36" x 118" Table, 60" Vert. Travel, S/N 7402 w/ IteX Digiline D.R.O.

### PLANER MILL

- Gray 4 Head Planer Mill, S/N 9125 w/ 50" x 144" Table, L & R Side Mt. Heads, 25 H.P., 2/ Univ. Overhead Rail Mt. Heads, 25 H.P.

### CYLINDRICAL GRINDERS

- Norton 14" x 72" Cyl. Grinder, M/N 1472/LCTU, S/N 27720
- Norton 10" x 72" Cyl. Grinder, M/N 1072CTA, S/N 10X2C1025L40



ADIRA PRESS BRAKE



NIAGRA 10' SHEAR



POWER BENDING ROLL

### MILLING MACHINES

- TRAK CNC Vert. Miller, Mod. DPM, S/N 95211 w/ 9" x 60" Pow. Feed Table & Pro-Trak MX3, 3 Axis CNC Control
- Sharp CNC Vert. Miller, Mod. HMX, S/N 80060030 w/ 9" x 48" Pow. Feed Table & Pro-Trak Plus 2 Axis CNC Control
- 3/ Bridgeport Series I Vert. Millers, 9" x 42" Table, Pow. Feed, S/N 2311688, S/N 28889, S/N 28199 w/ Mitutoyo D.R.O.'s
- Bridgeport Vert. Miller, 9" x 42" Table, S/N 12BR74851 w/ Anilam 2 Axis D.R.O.
- 2/ Bridgeport Vert. Millers, 9" x 32" Table, S/N 81430, 24399, 75477
- Cincinnati Hydrotel Vert. Miller, S/N 1H8V1R-4 w/ 30" x 120" Table
- Cincinnati 205-10-MI Plain Miller, S/N 232R5H-11 w/ Pow. Feed
- Nichols Horiz. Hand Miller w/ Hyd. Feed
- K & T Horiz. Miller, M/N 430-TF-20, S/N 5-9315 w/ 20" x 85" Pow. Feed Table
- K & T Horiz. Miller, M/N 625F, S/N 10-8483 w/ Pow. Feed Prod. Table
- Cincinnati Vert. Miller, M/N 430-20, S/N 434V5M-3 w/ 20" x 86" Pow. Feed Prod. Table
- Van Norman Univ. Miller, M/N 38MA, S/N 4370-1264 w/ 14" x 42" Table

### SURFACE GRINDERS

- Blanchard Rotary Surface Grinder, M/N 22AK-42, S/N 15591 w/ 42" Mag. Chuck & Coolant
- Taft Pierce Rotary Surface Grinder, 6" Mag. Chuck
- Jakobsen Auto Surface Grinder, 10" x 30" Mag. Chuck, M/N S38030, S/N JX1006
- B & S Surface Grinder, 6" x 18" Mag. Chuck, M/N 618
- Reid Walker Surface Grinder, 6" x 18" Mag. Chuck, M/N 6184, S/N 10167

### GRINDERS • SANDERS

- Cinn. Tool & Cutter Grinder, M/N 2 • Oliver Tool Grinder, M/N 300HD
- Diamond Carbide Tool Grinder, M/N 230 • Chevalier Tool Grinder
- Delta Carbide Tool Grinder, M/N X1650
- Delta Carbide Tool Grinder, M/N 23-505
- Rush Drill Bit Sharpener, M/N 252
- Hisey Wolf Drill Bit Sharpener, M/N 3JJWA
- 10/ Ass't D.E. Pedestal & Bench Grinders
- 20/ Ass't D.E. Pedestal & Bench Sanders/Buffers • Etc. • Etc.

### GEAR HOBBERS

- 3/ Barber Coleman 16" x 16" Horiz. Gear Hobbers, M/N 16/16, S/N 1981, 3775R, 3861
- Becher Brainerd Horiz. Gear Hobber
- Fellows Gear Shaper, 18" Cap., M/N 615A, S/N 328803366
- Gould & Eberhardt 20" Cap. Gear Shaper, S/N 2645A2

### DRILLING MACHINE

- Cleerman Versimatic Layout Drill Mach. w/ D.R.O.

### RADIAL ARM DRILLS

- Carlton 3A Rad. Arm Drill, 5' x 15" Column, S/N 4591 w/ 36" x 144" Table
- American Hole Wizard Rad. Arm Drill, 4' x 11" Column, S/N 68304-44
- W.T. Rad. Drill, M/N 1616-2, S/N 0000557

### LATHES

- Hankook Engine Lathe, 28" x 120" B.C., Hollow Spindle, Turnvision, Mod. Protek, S/N R88-71 w/ Vision 2 Axis D.R.O.
- American Engine Lathe, 14" x 150" B.C., Hollow Spindle, Mod. Zipshift, S/N 77367/64 w/ 2 Axis D.R.O.
- American Engine Lathe, 20" x 96" B.C., Mod. Pacemaker S/N 74429/55 w/ Mitutoyo 2 Axis D.R.O.
- Harrison Engine Lathe 17" x 84" B.C., Mod. M400-RPT, S/N 406313-5057 w/ Anilam D.R.O.
- LeBlond Engine Lathe, 15"x54" B.C., S/N 9C251 w/Acu-Rite 2 Axis D.R.O.
- SouthBend Engine Lathe, 14" x 48" B.C., S/N 1956HKR8
- Delta Engine Lathe 12" x 36" B.C.
- Bradford Engine Lathe, 16" x 48" B.C., S/N 6396
- Hardinge Second Operation Lathe, Vari-Sp., M/N DSM-59, S/N 59-130 w/ 6 Station Turret & Collet Closer
- B & S Second Operation Lathe

### TURRET LATHES

- J & L Univ. #3 Turret Lathe 21" Swing, S/N 201121
- J & L Univ. #5-3 Turret Lathe, S/N L22-352 w/ Bar Feed & Anilam D.R.O.
- J & L Univ. #7A-3 Turret Lathe, S/N 210340 w/ Bar Feed & Teledyne Pathfinder D.R.O.
- J & L Univ. #7A-3 Turret Lathe, S/N 222651 w/ Anilam D.R.O.

### BAND SAWS

- Kysor Johnson 10" x 12" Horiz. Met. Band Saw, M/N HA250, S/N 453845 w/ Coolant & Power In & Out Feed Conveyors
- DoAll 26" Vert. Met. Band Saw, M/N 26-3, S/N 128-59138 w/ Pow. Feed Table
- DoAll 12" Vert. Met. Band Saw, M/N VS-16, S/N 38255
- Powermatic 12" Vert. Met. Band Saw, M/N 143, S/N 2-531
- Dake Johnson 16" Vert. Met. Band Saw, M/N V-16, S/N 194242
- 3/ Delta 12" Vert. Met. Band Saws, S/N 84-6050, BU8166, 26-66490

### WELDERS

- Miller Shopmaster 300 Welding Power Source, 300 Amps AC/DC w/ Wire Feeder & Hi Freq. Arc Starter
- Miller Micromaster 300 Welding Power Source, 300 Amp w/ Wire Feeder & Hi Freq. Arc Starter
- 2/ Miller Port. Millermatic 250 Amp DC Arc Welder
- Lincoln Port. Mig. Welder, M/N SB100
- L-Tech Port. Plasma Cutter, Mod. PCM-VPI
- Ames 50KVA Spot Welder, M/N MIGAPT
- Air Craft Welding Positioner, Mod. 2A

## Aaron Posnik

AUCTIONEERS • APPRAISERS

Est. 1932

MA Auc. Lic. #161 • PA Lic. #AU-0038-R



**SDAY, MAY 21<sup>ST</sup> & 22<sup>ND</sup>**



**KYSOR METAL BANDSAW**



**ROTARY SCREW AIR COMPRESSOR**



**OKUMA & HOWA 4VA CNC MACHINING CENTER**

**WEDNESDAY, MAY 21<sup>ST</sup> AT 10:30AM**

**PRESS BRAKE**

- Adira CNC 10' Hyd. Press Brake, 100 Ton Cap., M/N QH-9030, S/N 1492/3358 w/ CNC Back GA., Dyna Bend Single Axis D.R.O. & Dies •

**SHEAR**

- Niagara 10' Power Squaring Shear, 10 GA., M/N IR-10, S/N 64575 w/ Pow. Back GA. & Sq. Arm •

**PUNCH**

- Strippit 30 Ton CNC Single Point Punch, M/N Super AC 30/30, S/N 2207092188D w/ CNC Controls & Tooling •

**METALWORKING MACHINERY**

- IPB Bending Roll 36" x 11 GA. Cap., Vari-Sp. •
- Pexto 36" Slip Roller • Chicago 8' Finger Brake •
- DiAcro Man. Bender w/ Dies • Custom Hyd. Bender •
- Parker Hannifin Elec./ Hyd. Fitting Crimper w/ Dies •
- Atnis Corner Notcher • Ass't Hand Tools • Etc. • Etc. •

**PAINT BOOTHS**

- Vinck 15' x 15' Paint Booth w/ 10 H.P. Blower, Explosion Proof Lights, Water Bath Filter, Paint Spray Equipment •
- 2/ Devilbiss 12' Paint Spray Booths w/ Paint Spray Equipment •

**AIR COMPRESSORS**

- Gardner Denver Rotary Screw Air Compr., 200 H.P. w/ Hankison Air Dryer •
- Ingersoll-Rand Air Compr., 15 H.P., 3 Ph. •
- Iwata Air Compr., 5 H.P., 3 Ph., M/N SP-55PB •

**WASTE WATER TREATMENT SYSTEM**

w/Nordale Evaporator, Blower, Sump Pump, Filters & Treatment Tank •

**BRIDGE CRANES**

- C & M Lodestar 2 Ton Double Girder Traveling Bridge Crane, 40' Span x 240' Travel w/ 2 Ton Elec. Hoist, Pendant Controls •
- Spanmaster 2 Ton Double Girder Traveling Bridge Crane, 40' Span x 110' Travel w/ 2 Ton elec. Hoist, Pendant Controls •
- Spanmaster 2 Ton Double Girder Traveling Bridge Crane, 40' Span x 150' Travel w/ 2 Ton elec. Hoist, Pendant Controls •
- Coffing 1 Ton Double Girder Traveling Bridge Crane, 25' Span x 30' Travel w/ 1 Ton elec. Hoist, Pendant Controls •
- Spanmaster 1 Ton Single Girder Traveling Bridge Crane, 40' Span w/ 1 Ton elec. Hoist, Pendant Controls •

**MISCELLANEOUS MACHINERY**

- Sunnen Honing Mach., M/N MBB-1600 w/ Mandrels •
- Knight Jig Borer, M/N 50 w/ Anilam D.R.O. •
- 2/ Burgmaster 5 Spindle Turret Drills, M/N 1D •
- Delta & Allen Multi Spindle Drill Presses •
- 15/ Ass't Delta Pedestal & Bench Drill Presses •
- Trincio Bead Blaster w/ Dust Collector • Sweco Vib. Finishing Mill •
- 2/ Schmidt Pneu. Marking Mach's, M/N 25 •
- Torit & Tepco Dust Collectors •
- Greenerd Arbor Presses • Dayton Pantograph Engraver •
- Etc. • Etc. •

**PLANT SUPPORT EQUIPMENT**

- 12 Station Solvent Lube Dispensing Sys. •
- Power America Port. Pressure Washer •
- FMC Floor Sweeper, Prop., M/N 60 •
- 20/ Ass't Tool Cabinets • 12/ Port. Self Dumping Hoppers, 1-2 Yd. •
- 12/ Jib Cranes 1 Ton • Hyd. Pallet Trucks • Dye Trucks •
- Cantilever Steel Stock Racks • 50/ Sections Pallet Racking •
- 100/ sections Metal Shelving • Flameproof Cabinets •
- Cut & Weld Outfits • Strapping Mach.s •
- Safety, Stock, Ext. & Step Ladders • Barrel & Hand Trucks •
- Fairbanks Platform Scale • 2/ Digital Counting Scales •
- Elec. & Pneu. Drills, Sanders, Grinders, Nailers, Staplers •
- Jig Saws • Blowers • Socket Sets • C-Clamps •
- Pipe Reamers, Threaders & Dies • Port. Smog Hog •
- Port. Fume Detector • Clear Burn Waste Oil Burner, 275 Gal. •
- Port. Carts • Met. Storage Cabinets • Pedestal Fans • Shop Vac's •
- 300/ 6' Metal Lockers • Eye Wash Stations •
- Workbenches • Etc. • Etc. •

**HANDLING EQUIPMENT**

- CAT Forklift, 5000# Cap., Sol. Tires, Prop., M/N T50B •
- CAT Forklift, 3000# Cap., Sol. Tires, Prop., M/N TC30 •
- Clark Forklift, 4000# Cap., Sol. Tires, Prop., M/N C40B •
- 2/ Prime Mover Elec. Pallet jacks, 6000# Cap. w/ Chargers •
- L.S. Elec. Walk Behind Crane w/ Vandro Hyd. Boom, 1500# Cap. •
- Clark Tugger, Pneu. Tires, Gas, M/N CT40 •
- Genie Manlift, 300# Cap., M/N PEU15DC •
- ★ I. H. 3850 Wheel Loader, S/N 1261 w/ G.P. Bucket ★

**VEHICLES**

- 1994 Ford E-350 Econoline Cargo Van •
- 1988 Ford E-350 Econoline Cargo Van •
- 1979 Ford F250 Rack Truck w/ Sand Spreader & 8' Plow •

★ Large Qty. Steel & S.S. Stock Round, Flat, Bar & Angle ★



**TRAK CNC VERTICAL MILLER**



**SHARP CNC VERTICAL MILLER**



**STRIPPIT SUPER AG PUNCH**



**JAKOBSON SURFACE GRINDER**



**DAKE VERTICAL BANDSAW**



MAZAK QT-28N CNC TURNING CENTER



MAZAK SQT-30M CNC TURNING CENTER

## TO BE SOLD DAY 2 - THURSDAY, MAY 22<sup>ND</sup>

### INSPECTION EQUIPMENT & TOOLING

- Rockwell Hardness Tester • Mitutoyo Ht. Master •
- Mitutoyo Surface Roughness Tester, #401 •
- Riser Blocks • B & S Hite Chek Gage •
- Sunnen Hole Gages • Ht. Gages • Vernier Calipers •
- Micrometers • Pin Gage Sets • Gage Blocks •
- Step & V-Blocks • Dial Indicators •
- Plug, Thread & Snap Gages • Angle Plates • Parallels •
- Boring Heads • Indexing & Dividing Heads •
- Quill Heads • Rotary Tables • Granite Surface Plates •
- M.M. Vises • Machine & Bench Vises • Collets •
- Chucks • Tool Holders • Hold Downs • Stamp Sets •
- Ass't Drills, Reamers, End Mills, Taps, Cutters. Etc. • Etc. •

### ELECTRONICS EQUIPMENT

- 4/ Tektronix Oscilloscopes • Multimeters •
- Sweep Function Generators • Power Supplies •
- Zewo Bench Lathe • Bench Grinders & Drills •
- Lab Benches • Parts Cabinets •
- Gd. Qty. Electronics & Electrical Supplies & Accessories • Etc. • Etc. •

### PHOTOGRAPHIC EQUIPMENT

- Omega Color Enlarger • Olympus 35 MM Cameras •
- Polaroid 1D Camera • Ass't Lenses • Flashes •
- Darkroom Lights • Video Camera • VCR • Ass't Film •
- 8/ Photo Exposure Lights w/ Tripods • Etc. • Etc. •

### INVENTORY

- IPBM Swift™ Right Angle Gluer •
- IPBM 52" Speed King Straight Line Gluer •
- Staude™ Master Carton Gluer •
- 2/ Multifold AutoLoader™ Carton Packers •
- Multifold 4026 Uni-Feeder •
- Multifold Carton Turnover System for UniFeeder •
- IPBM Universal Queen Transfer Section •
- Escomat™ Jet Packer •
- IPBM 8CH Stacker for Window Machine •
- IPBM FCJ Suction Feeder for Staude Master •
- 3/ 6' Hytrol Roller Conveyors •
- Multifold Robotic Packer •
- Multifold Large Carton Loader •
- Multifold Corrugated Stacker/Bundler •
- Multifold Lock Bottom Packer •
- Misc. Motors & Gluer Controllers • Etc. • Etc. •

### WOODWORKING MACHINERY

- Oliver 20" x 48" BC Wood Lathe, M/N 25B, S/N 77-58 •
- Oliver 18" Planer, M/N 399-18, S/N 67518 •
- Oliver 16" Jointer, M/N 166CA, S/N 70418 •
- Oliver 24" Vert. Band Saw, M/N 217D, S/N 72637 •
- Whitney 10" Tilt Arbor Tab. Saw, M/N 177, S/N 15750 •
- Beech 22" Swing Arm Saw, 10 H.P., 3 Ph., S/N 47F04 •
- P.C. Ped. Spindle Sander, M/N 551, S/N 1016 •
- Boice Crane Oscillating Spindle Sander, M/N 3501 •
- New Eleven 36" Pinch Roller, M/N SP-97 •

### OFFICE MACHINES & FURNISHINGS

- Lucent Definity Phone Sys. w/ 65 Hand Sets •
- 20/ Ass't P.C.'s w/ Monitors, Keyboards, Mouse & Speakers •
- LaserJet Printers • Scanners • Fax Mach. • Shredder •
- 12' Conference Table w/ 12 Exec. Swivel Chairs •
- 10' Conference Table w/ 12 Exec. Chairs •
- 6' Oval Conference Table w/ 6 Uph. Chairs •
- 10/ Cherry Exec. Desks • 50/ Sec. & Exec. Desks •
- Credenzas • 100/ Met. Vert. & Lateral File Cabinets •
- 2D-5D • Blueprint & Storage Cabinets •
- Bookcases • 150/ Sec. & Exec. Chairs •
- Drafting Tables • Office, End & Computer Tables •
- Sofas • Coat Racks • Desk Lamps • Time Clocks •
- 2D Safe • Marking & Bulletin Boards • Calculators •
- Typewriters • Microfiche Viewers •
- Color T.V.'s • Refrigerators • Etc. • Etc. •

### CAFETERIA EQUIPMENT

- Classic 2D S.S. Refrig./Freezer, Self Cont. •
- Traulsen 1D S.S. Refrig. Self Cont. •
- Traulsen Glass Door Refrig., Self Cont. •
- Lang S.S. 1D Convection Oven • GE Microwave Oven •
- Kelvinator 6 Hole Ice Cream Freezer •
- Bunn S.S. Coffeemaker •
- Hobart 4 Slice Toaster • Connolly Hot Dog Mach. •
- 24' Cafeteria Serving Line w/ Steam Table, Bain Marie, Sneeze Guard •
- Food Warming Lights • S.S. Pans •
- 12/ 6' Formica Top Tables •
- 80/ Stack Chairs • Royal Cash Reg. • Etc. • Etc. •

**ATTEND • BUY • SAVE**



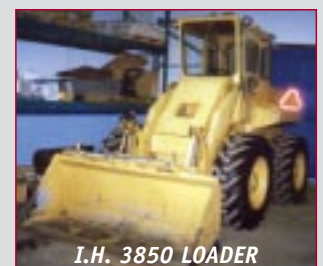
CAT FORKLIFT



CAT FORKLIFT



CLARK FORKLIFT



I.H. 3850 LOADER

Visit our Website @ [www.posnik.com](http://www.posnik.com)

**Aaron Posnik**

AUCTIONEERS • APPRAISERS

Est. 1932

MA Auc. Lic. #161 • PA Lic. #AU-0038-R

Aaron Posnik & Co., Inc.  
83 State Street • Springfield, MA 01103  
(413) 733-5238 (Fax) 731-5946

Aaron Posnik & Co., Inc.  
5 Great Valley Parkway, Suite 244 • Malvern, (Philadelphia) PA 19003  
(610) 853-6655 (Fax) 583-6633



# 2 DAY A PUBLIC AUCTION

• PAPER BOX MACHINERY MANUFACTURER •

• MACHINE TOOLS •

• CNC MACHINING AND TURNING CENTERS •

• MILLERS • GRINDERS • LATHES • SAWS •

• METALWORKING & WOODWORKING MACHINES •

• FORKLIFTS • BRIDGE CRANES • VEHICLES •

• GLUER & FOLDER-GLUER MACHINE PARTS • STEEL STOCK •

• OFFICE MACHINES & FURNISHINGS •

ASSETS NO LONGER NEEDED BY THE NEW OWNERS OF

**I** N T E R N A T I O N A L

THE INTERNATIONAL PAPER BOX MACHINE CO., INC.

90 NORTHEASTERN BOULEVARD NASHUA, NEW HAMPSHIRE

TO BE SOLD ON THE PREMISES

WEDNESDAY & THURSDAY, MAY 21<sup>ST</sup> & 22<sup>ND</sup>

STARTING AT 10:30 A.M. EACH DAY

INSPECTION: TUESDAY, MAY 20<sup>th</sup> – 10:00 AM TO 4:00 PM

& MORNING OF EACH SALE – 8:30 AM TO 10:30 AM

TERMS OF SALE: 25% DEPOSIT CASH OR CERTIFIED CHECK

10% BUYERS PREMIUM APPLIES.

OTHER TERMS TO BE ANNOUNCED AT TIME OF SALE

PAUL W. SCHEER, NH AUC. LIC. # 3073

**Aaron Posnik**

AUCTIONEERS • APPRAISERS

Aaron Posnik & Co., Inc.  
83 State Street  
Springfield, MA 01103

First Class Mail  
U.S. POSTAGE  
PAID  
Permit No. 12  
Springfield, MA

RETURN SERVICE REQUESTED

Mass. Auc. Lic. #161  
Penn. Auc. Lic. #AU-0038-R  
Est. 1932

Visit our Website @ [www.posnik.com](http://www.posnik.com)

Aaron Posnik & Co., Inc.  
83 State Street • Springfield, MA 01103  
(413) 733-5238 (Fax) 731-5946

Aaron Posnik & Co., Inc.  
5 Great Valley Parkway, Suite 244 • Malvern, (Philadelphia) PA 19003  
(610) 853-6655 (Fax) 583-6633

## WEDNESDAY & THURSDAY, MAY 21<sup>ST</sup> & 22<sup>ND</sup> STARTING AT 10:30 AM EACH DAY



RUSH DRILL BIT SHARPENER



OLIVER TOOL GRINDER

#### TERMS & CONDITIONS:

EVERYTHING SOLD "AS IS/WHERE IS" – NO CONFIRMATION

#### TERMS OF SALE:

25% DEPOSIT AT TIME OF SALE BY CASH OR CERTIFIED OR BANK WIRE TRANSFER. 10% BUYERS PREMIUM APPLIES. PERSONAL OR COMPANY CHECK ACCEPTED ONLY IF ACCOMPANIED WITH A BANK LETTER GUARANTEEING PAYMENT. EXAMPLE OF BANK LETTER OF GUARANTEE: THIS BANK GUARANTEES PAYMENT TO AARON POSNIK & CO., INC. ON ACCOUNT # \_\_\_\_\_ UP TO THE AMOUNT OF \$ \_\_\_\_\_ FOR PURCHASES MADE AT THE INTERNATIONAL PAPER BOX MACHINE CO., INC. AUCTION TO BE HELD ON MAY 21<sup>ST</sup> AND 22<sup>ND</sup>. NO PURCHASE REMOVED UNTIL COMPLETE SETTLEMENT IS MADE. OTHER TERMS TO BE ANNOUNCED AT TIME OF SALE.

#### BID BY MAIL:

IF YOU CANNOT ATTEND THIS AUCTION IN PERSON WE WILL BE HAPPY TO RECEIVE YOUR BID ON THE ITEMS THAT YOU DESIGNATE (IF YOUR BID IS SENT BY MAIL OR FAX AND RECEIVED BY OUR OFFICE AT LEAST 24 HOURS PRIOR TO THE COMMENCEMENT OF THE SALE). IF YOU WISH TO BID BY MAIL, KINDLY PROVIDE A COMPLETE LIST OF THE ITEMS DESIRED AND ENCLOSE A 25% DEPOSIT BY CERTIFIED CHECK. YOU WILL BE RESPONSIBLE FOR PURCHASES IF YOU ARE THE HIGH BIDDER, UNDER THE TERMS AND CONDITIONS TO BE ANNOUNCED AT TIME OF SALE. IF YOU ARE THE SUCCESSFUL BIDDER, WE WILL NOTIFY YOU WITHIN 24 HOURS OF THE SALE AND YOU MUST MAKE PAYMENT OF THE BALANCE DUE BY WIRE TRANSFER TO OUR BANK WITHIN 24 HOURS OF NOTIFICATION. IF YOU ARE UNSUCCESSFUL IN YOUR BID, YOUR DEPOSIT WILL BE RETURNED TO YOU WITHIN 72 HOURS OF THE SALE.

#### IMPORTANT NOTICE:

THE INFORMATION DESCRIBED IN THIS BROCHURE IS CORRECT TO THE BEST OF OUR KNOWLEDGE BUT WE CANNOT GUARANTEE SAME. IT IS FOR THIS REASON THAT BUYERS SHOULD AVAIL THEMSELVES OF THE OPPORTUNITY FOR INSPECTION PRIOR TO THE SALE.

Visit our Website @ [www.posnik.com](http://www.posnik.com)

**Aaron Posnik**

AUCTIONEERS • APPRAISERS

PAUL W. SCHEER, NH AUC. LIC.# 3073

Aaron Posnik & Co., Inc.  
83 State Street • Springfield, MA 01103  
(413) 733-5238 (Fax) 731-5946

Est. 1932  
MA Auc. Lic. #161 • PA Lic. #AU-0038-R

Aaron Posnik & Co., Inc.  
5 Great Valley Parkway, Suite 244 • Malvern, (Philadelphia) PA 19003  
(610) 853-6655 (Fax) 583-6633