

Secured Party Sale by

A PUBLIC AUCTION

TEXTILE MILL **DYEING, PRINTING & FINISHING** **MACHINERY & EQUIPMENT**

- DESIZE & WASH RANGE • CLOTH BEAMERS •
- PRINT MACHINES • FINISHING RANGES • TENTER RANGE •
- BEAM DYERS • SANFORIZER • CALENDERS • LAB EQUIPMENT •
- INSPECTION MACHINES • BOILERS • COMPRESSORS • FORKLIFTS •
- PLANT SUPPORT EQUIPMENT • OFFICE FURNISHINGS •

SANDHILLS PRINTING & FINISHING INCORPORATED
1501 DOUGLAS DRIVE SANFORD, NC

TO BE SOLD ON THE PREMISES

THURSDAY, AUGUST 15TH AT 11:00 A.M.

INSPECTION: WEDNESDAY, AUGUST 14TH – 10:00 A.M. TO 5:00 PM
MORNING OF SALE – 8:30 A.M. TO 11:00 A.M.



1986 STORK RD IV PRINT MACHINE

Visit our Website @ www.posnik.com

Aaron Posnik

AUCTIONEERS • APPRAISERS

Aaron Posnik & Co., Inc.
83 State Street • Springfield, MA 01103
(413) 733-5238 (Fax) 731-5946

Est. 1932
MA Auc. Lic. #161 • PA Lic. #AU-0038-R

Aaron Posnik & Co., Inc.
5 Great Valley Parkway, Suite 244 • Malvern, (Philadelphia) PA 19003
(610) 853-6655 (Fax) 853-6633

A PUBLIC AUCTION

SECURED PARTY SALE
SANDHILLS PRINTING & FINISHING INCORPORATED
 1501 DOUGLAS DRIVE, SANFORD, NORTH CAROLINA
 TO BE SOLD ON THE PREMISES
THURSDAY, AUGUST 15TH AT 11:00 A.M.

INSPECTION:

WEDNESDAY, AUGUST 14TH - 10:00 A.M. TO 5:00 P.M.
 THURSDAY, AUGUST 15TH - 8:30 A.M. TO 11:00 A.M.

DIRECTIONS:

FROM RALEIGH - TAKE RT. 1 SOUTH TO THE SPRING LANE (SANFORD) EXIT; TURN RIGHT AT END OF RAMP; TURN RIGHT AT 1ST TRAFFIC LIGHT (DOUGLAS DRIVE); MILL IS 2/10THS MILE ON LEFT.

FROM ROUTE 1 NORTH - TAKE THE SPRING LANE EXIT; AT END OF RAMP TURN LEFT. PROCEED 1/10TH MILE. TURN RIGHT ONTO DOUGLAS DRIVE; PROCEED TO MILL.

FROM GREENSBORO - TAKE RT. 421 TO SANFORD; AT JUNCTION OF 421 & RT. 1 TAKE RT. 1 SOUTH TO SPRING LANE EXIT. FOLLOW ABOVE DIRECTIONS. (WATCH FOR AUCTION SIGNS).

AIRPORTS:

RALEIGH DURHAM INTERNATIONAL AIRPORT
 1600 TERMINAL BLVD., RALEIGH, NC (42 MILES FROM MILL)

PIEDMONT TRIAD AIRPORT
 6415 BRYAN BLVD., GREENSBORO, NC (67 MILES FROM MILL)

LODGING:

COMFORT INN - 1403 N. HORNER BLVD., SANFORD, NC 1-919-774-6411

DAYS INN - 404 CARTHAGE ST., SANFORD, NC 1-919-775-2328

HAMPTON INN - 1904 S. HORNER BLVD., SANFORD, NC 1-919-775-2000

TERMS & CONDITIONS:

EVERYTHING SOLD "AS IS/WHERE IS"

TERMS OF SALE:

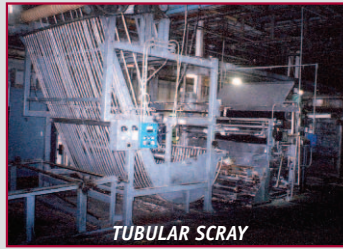
25% DEPOSIT AT TIME OF SALE BY CASH OR CERTIFIED CHECK OR BANK WIRE TRANSFER, PERSONAL OR COMPANY CHECK ACCEPTED ONLY IF ACCOMPANIED WITH A BANK LETTER GUARANTEEING PAYMENT. EXAMPLE OF BANK LETTER OF GUARANTEE: THIS BANK GUARANTEES PAYMENT TO AARON POSNIK & CO., INC. ON ACCOUNT # _____ UP TO THE AMOUNT OF \$ _____ FOR PURCHASES MADE AT THE SANDHILLS PRINTING & FINISHING INCORPORATED AUCTION TO BE HELD ON AUGUST 15TH. NO PURCHASE REMOVED UNTIL COMPLETE SETTLEMENT IS MADE. 10% BUYERS PREMIUM APPLIES. OTHER TERMS TO BE ANNOUNCED AT TIME OF SALE.

BID BY MAIL: IF YOU CANNOT ATTEND THIS AUCTION IN PERSON WE WILL BE HAPPY TO RECEIVE YOUR BID ON THE ITEMS THAT YOU DESIGNATE (IF YOUR BID IS SENT BY MAIL OR FAX AND RECEIVED BY OUR OFFICE AT LEAST 24 HOURS PRIOR TO THE COMMENCEMENT OF THE SALE). IF YOU WISH TO BID BY MAIL, KINDLY PROVIDE A COMPLETE LIST OF THE ITEMS DESIRED AND ENCLOSE A 25% DEPOSIT BY CERTIFIED CHECK. YOU WILL BE RESPONSIBLE FOR PURCHASES IF YOU ARE THE HIGH BIDDER, UNDER THE TERMS AND CONDITIONS TO BE ANNOUNCED AT TIME OF SALE. IF YOU ARE THE SUCCESSFUL BIDDER, WE WILL NOTIFY YOU WITHIN 24 HOURS OF THE SALE AND YOU MUST MAKE PAYMENT OF THE BALANCE DUE BY WIRE TRANSFER TO OUR BANK WITHIN 24 HOURS OF NOTIFICATION. IF YOU ARE UNSUCCESSFUL IN YOUR BID, YOUR DEPOSIT WILL BE RETURNED TO YOU WITHIN 72 HOURS OF THE SALE.

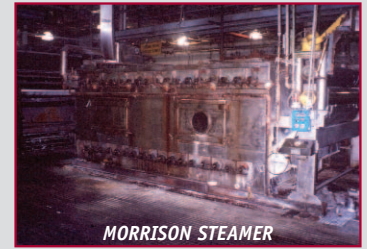
IMPORTANT NOTICE: THE INFORMATION DESCRIBED IN THIS BROCHURE IS CORRECT TO THE BEST OF OUR KNOWLEDGE BUT WE CANNOT GUARANTEE SAME. IT IS FOR THIS REASON THAT BUYERS SHOULD AVAIL THEMSELVES OF THE OPPORTUNITY FOR INSPECTION PRIOR TO THE SALE.

SALES TAX: NORTH CAROLINA SALES TAX LAWS APPLY - DEALERS BRING COPY OF EXEMPT NUMBER

NC FIRM LICENSE #7512
 JOHN GARRISON BOYD, JR, NCAL #2750



TUBULAR SCRAY



MORRISON STEAMER



CLOTH BEAMERS



KENYON PIN TENTER FRAME



STRAPPING MACHINES



INSPECTION MACHINES

K U S T E R S 8 0 "

DESIZE & WASH RANGE

Consisting of:

- Let-Off Bar; 90" Tubular S.S. Scray; 2/ S.S. Tanks, 250 Gal. Cap. w/ Elec. Mixers; Air Guiders; Morrison 80" Open Width Saturator Box; 80" 3 Roll Compensator; Morrison 80" Tight Strand Steamer, 60 Yd. Cap; Morrison 80" Rubber/ S.S. Nip; 5/ Kusters Horiz. Wash Boxes, 25 Yd. Cap., w/ Nips; Vac Slot, 20 H.P. w/ Vac Pump
- 4/ Vertical Stack Dry Cans 10 Cans Each w/Compensator; Birch Bros. 3 Roll 78" Auto Batcher; Motors & Controls

CLOTH BEAMERS

- 3/ Cloth Beamers 80" Wide w/ Bar Let-Off, Birch Bros. Sew Mach. Railway w/ Merrow Head #70D3B, 3 Roll Tension Device & Center Bar Takeup
- Cloth or Dye Beamer 80" Wide w/ Let-Off Stand Tension Device; Bow Roll; Trumeter w/ Fife Edge Guider, 88" Take-Up

BEAM DYE MACHINES

- Burlington Beam Dye Mach., 91" x 38" x 55" Deep w/ Goulds S.S. Pump, Auto Controls, 60 H.P., 3 Ph.
- 3/ Burlington Beam Dye Mach.'s, 90" x 50" x 48" Deep w/ Goulds S.S. Pumps, 60 H.P., 3 Ph.
- 10/ Ass't Dye Beams, 80" & 64" x 24" Diam.

JIGG DYE MACHINE

- Van Vlaanderen 70" Wide, Mod. 900

STORAGE TANKS

- 6000 Gal. Aluminum Peroxide Tank
- 4/ Fiberglass Tanks, 3000, 5000, 6000 & 8000 Gal.

HEAT RECOVERY SYSTEM

- 1993 Ludell Heat Recovery Sys. w/ 3 S.S. 26" Tubes & Heat Exchanger

BOILERS

- Cleaver Brooks Package Boiler 500 H.P., 150 PSI, Gas/Oil, Mod. CB-600-500, S/N L-62238
- Johnson Bros. Steam Boiler 700 H.P., 150 PSI, Mod. 5337

AIR COMPRESSORS

- I.R. Rotary Screw Air Compressor 100 H.P., Mod. SSR-EP100
- I.R. Rotary Screw Air Compressor 50 H.P. w/ I.R. Air Dryer
- Gardner Denver Electrosaver II Rotary Screw Air Compressor 100 H.P., Mod. ECPQME

SEWING MACHINES

- 10/ Merrow 70D3B Sew Mach.'s w/ Tables & Motors
- 4/ Merrow 70-Y3B Sew Mach.'s w/ Tables & Motors

CALENDERS

- 1992 Morrison 3 Roll Hot Calendar 81" Face w/ Perkins Hot Oil Boiler
- McKiernan-Terry 2 Roll Finishing Calendar, 51" Face, Gas

MATERIAL HANDLING EQUIPMENT

- Clark Forklift, 8000# Cap., Prop., Pneu. Tires, Mod. C500 YF80
- Allis Chalmers 3000# Cap., Prop., Sol. Tires
- Up-Right Scissor Lift, Mod. SL-26
- Rol-Lift Elec. Lift Truck, 1500# Cap.
- Elec. Hoists • Hand Trucks • Barrel Trucks



AC FORKLIFT



CLARK FORKLIFT



HOMOGENIZER



MST BALER



HEAT RE

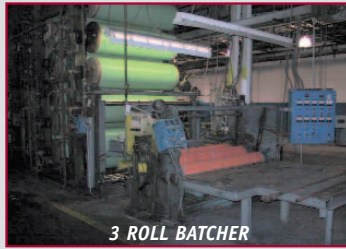
THURSDAY, AUGUST 15th at 11:00AM



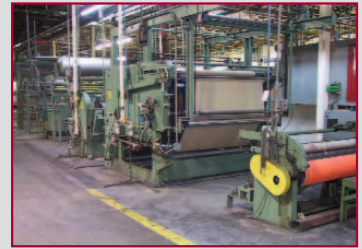
KUSTERS WASH BOXES



VERT. STACK DRY CANS



3 ROLL BATCHER



SANFORIZER



MORRISON CALENDER



MCKIERNAN-TERRY CALENDER



BEAM DYE MACHINES



CLEVER BROOKS BOILER



GARDNER DENVER COMPRESSOR

DESIGN & WASH RANGE

TENTER RANGE

Windsor & Jerald Tenter Range Consisting of:
80" S.S. Scray; Set #45 Air Guides;

2/ 90" Rubber Roll Van Vlaanderen Pads, 10 Ton, 18" Diam. Rolls; 80" Wide Compensator; Single Pass Gas PreDryer; Mt. Hope 100" Wide Opt. Weft Straightener;

Windsor & Jerald 110" x 80" Wide Tenter Frame w/ 12M Chain, Toyo Optical Pneu. Rail Guides, Mylub 21 Auto Lube Sys.; 6 Zone 90" Long Proctor & Schwartz Gas Fired Housing; 80" Wide Parkinson 3-Roll Semi-Auto Batcher; Motors & Controls

FINISHING RANGES

Finishing Range Consisting of:

76" Scray; Set Specialty air Guiders; Greenville Steel Padder Mod. 600, 80" Wide Rubber/Rubber 10 Ton w/ 18" Diam. Rolls; (2) S.S. 200 Gal. Cap. Tanks; 80" Adj. Slot; Mahlo 2 Meter Wide Opt. Weft Straightener, Mod. FMC; 110" Kenyon Pin Tenter Frame, 96" Wide Overfeed, 72" Wide w/ Tandematic Plate Guides w/ Kingsley Gas Fire 4 Zone Oven; Birch Bros. Knit Goods Batcher, 3 Roll, 90" Wide Fully Auto.; Center Wind Takeup w/ Expander Bar; Motors & Controls

Finishing Range Consisting of:

68" Port. S.S. Scray; Set Guider Specialty #45 Air Guiders; Van Vlaanderen 70" Wide 2/ Rubber Roll Padder, 18" Diam. Rolls, 10 Ton; Mahlo 80" Face Orhtomat Weft Straightener Mod. FMC-7; Single Pass Elec. PreDryer w/ 6 Infrared Burners; 110" x 68" Van Vlaanderen H.D. Tenter Frame Mod. 500 w/ Hydralign Elec. Hyd. Rail Guides and W & J #12M Roller Chain; National 90" - 2 Zone Gas Fired Oven; 70" Cooling Can; Birch Bros. 3 Roll Auto Batcher w/ 72" Saw Tooth Blades; Motors & Controls

Finishing Frame Consisting of:

77" S.S. Scray; Set #45 Air Guides; Monforts 2 Rubber Roll 80" Padder; Mahlo 80" Weft Straightener; Van Vlaanderen 120" Wide x 78" Tenter Frame, Mod. 500; Lanley 100' Gas Fired - 2 Zone Housing; Cooling Cans; 2/ Slat Expanders; L & W 80" - 3 Roll Semi-Auto Batcher; Motors & Controls

SANFORIZER

Sanforizer Consisting of:

CM Loadstar 1 Ton Elec. Hoist; Bar Let-Off; 72" Tubular Scray; Mt. Hope 72" - 3 Roll Tension Device; Mt. Hope Spring Guiders; 64" Cole Spray; Morrison 70" Wide Rubber Belt Section; Palmer Section 70" Wide x 60" Diam. & 70" Wide x 36" Diam.; Werner 2 Roll Semi-Auto 70" Batcher; Reliance Vari-Sp. Drive

INSPECTION MACHINES

- 4/ Van Vlaanderen 84" Inspection Machines; 2-Roll Surf. Winder w/ Tables & Trumeter •
- 2/ Van Vlaanderen 80" Inspection Machines w/ Trumeter •
- 4/ Van Vlaanderen 74" Inspection Machines w/ Trumeter •
- ★ Perfect Measuring 72" Measuregraph, Mod. 564, S/N 3706 ★

BALER

- MST Hyd. Baler, 5' x 2' Downstroke •

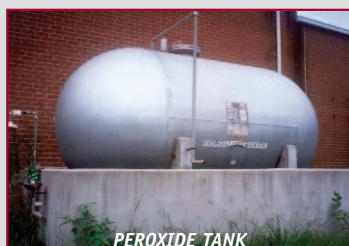
PRINTING MACHINES



RECOVERY SYSTEM



S.S. MIXING TANKS



PEROXIDE TANK

- 3/ Stork RDIV Print Machines, 12 Color, 1850MM Print Width, Years 1978, 1982, 1986 with Stork Infeeds, Lint Collectors, Glueing Devices, Blanket Washer, Color Pumps, (2) w/ 3-Pass Belt Dryer, 3 Section, Gas Fired & (1) w/ 3-Pass Gas Dryer, 4 Section, D.C. Drives •
- Stork RDIII Print Machine, 12 Color, 1850MM Print Width, Year 1973, w/ Stork Infeed, Lint Collector, Glueing Device, Blanket Washer, Color Pump, w/ 3-Pass Steam Fired Dryer •
- Gd. Qty. Print Heads & Color Pipes •

PRINT AREA

- Van Wyk 2-Position Screen Washer • VIP Color Strainer • Poterala Barrel Washer •
- 4/ 1500 Gal. S.S. Mixing Tanks w/ Mixers •
- 30 HP Homogenizer w/ 1 Ton Elec. Hoist •
- 2/ 10 HP Homogenizers w/ 1Ton Elec. Hoists •
- 3 HP Homogenizer w/ 1/4 Ton Hoist •

STRAPPING MACHINES

- Signode Plastic Strapping Mach., M/N MCA-710-LF, S/N 101035 w/ Hytol 30" x 14" Met. Roller Conveyor •
- 2/ Signode Met. Strapping Mach's, M/N SP710, S/N 31178 & 31089 w/ 65" x 32" Met. Roller Conveyor •
- 3/ Rough Deck 6' Scissor Lift Roller Conveyor Tables •
- 3/ Digital Scales, 5000# x 1# Cap. • 30/ Coils Strapping, 7500' Per •

PLANT SUPPORT EQUIPMENT

- Dayton Port. Steam Cleaner • Clark & Minute Man Floor Mach's • Yard-Man Riding Lawn Tractor, 15 H.P. • Smith Power Pro Plasma Cutter, Mod. 55 • Miller Idealarc 250 Amp AC/DC Arc Welder • Viking 30 Ton Hyd. Press • Southbend 16" x 10' Bed Q.C. Lathe • 10" x 6' Bed Q.C. Lathe • Dayton D.E. Bench Grinder • Ridgid Pipe Threader #300 • Ass't Tools • Vises • Stock, Step & Ext. Ladders • Cardinal Electronic Scale 1000# Cap. • Dig. Platform Scale • Nat. Digital Platform Scale, Mod. 5780 • O'Haus Electronic Platform Scale, Mod. 1-20W • 55/ 5' Hyd. Steel 2-Tier Fabric Trucks • 36/ Sections Steel Storage Racks • Floor Fans • Eye Wash Stations • Etc. • Etc. •

LAB EQUIPMENT

- Lab Line Imperial II Radiant Heat Oven, Elec. • Despatch Oven Mod. 288, Auto. 400° F • 3/ J.A. King Sample Cutters, Mod. 3090AC2 • 2/ Dialogram Scales, 50 oz. Cap., Mod. 3090-A • George Knight Flat Heat Press, Mod. 6745 • Vertical Flameability Tester • 12" Pneu. Lab. Pad • Atlas Launrometer, Mod. LEF • 2/ Fabric Markers • Detector Junior Bench Scale, Mod. 1102DEV • Colormate Hot Plate • Thermolyne 2200 Hot Plate • Kenmore Washer & Dryer • Ass't Lab Glassware • Worktables • Etc. • Etc. • Brookfield Lab. Homogenizer • S.S. Mixing Tanks • S.S. Pails • Etc. •

OFFICE FURNISHINGS

- NEC Phone Sys. w/ 38 Ext's • 2/ Sharp Copiers, SF2622 & SF7900 • 2/ Canon Copiers, PC6RE & PC320 • 2/ Sharp & Murato Fax Mach's • Amano Time Clocks • P.C.'s w/ Monitors & Keyboards • Printers • Calculators • Typewriters • Marking Boards • 60/ Met. File Cabinets, 2, 4 & 5D • Folding Tables • Desks • Chairs • Etc. • Etc. •

Aaron Posnik

AUCTIONEERS • APPRAISERS

Est. 1932

MA Auc. Lic. #161 • PA Lic. #AU-0038-R

Aaron Posnik & Co., Inc.
5 Great Valley Parkway, Suite 244 • Malvern, (Philadelphia) PA 19003
(610) 853-6655 (Fax) 853-6633

Secured Party Sale By

A PUBLIC AUCTION

TEXTILE MILL

DYEING, PRINTING & FINISHING
MACHINERY & EQUIPMENT

- DESIZE & WASH RANGE • CLOTH BEAMERS •
- PRINT MACHINES • FINISHING RANGES • TENTER RANGE •
- BEAM DYERS • SANFORIZER • CALENDERS • LAB EQUIPMENT •
- INSPECTION MACHINES • BOILERS • COMPRESSORS • FORKLIFTS •
- PLANT SUPPORT EQUIPMENT • OFFICE FURNISHINGS •

SANDHILLS PRINTING & FINISHING INCORPORATED

1501 DOUGLAS DRIVE • SANFORD, NC

TO BE SOLD ON THE PREMISES

THURSDAY, AUGUST 15TH AT 11:00 A.M.

SALE PER ORDER OF SECURED PARTY

TERMS OF SALE: 25% DEPOSIT CASH OR CERTIFIED CHECK

10% BUYERS PREMIUM APPLIES

OTHER TERMS TO BE ANNOUNCED AT TIME OF SALE

INSPECTION: WEDNESDAY, AUGUST 14TH - 10:00 A.M. TO 5:00 P.M.

MORNING OF SALE - 8:30 A.M. TO 11:00 A.M.

NC FIRM LICENSE #7512

JOHN GARRISON BOYD, JR, NCAL #2750

Aaron Posnik

AUCTIONEERS • APPRAISERS

Mass. Auc. Lic. #161
Penn. Auc. Lic. #AU-0038-R
Est. 1932

Visit our Website @ www.posnik.com

Aaron Posnik & Co., Inc.
83 State Street • Springfield, MA 01103
(413) 733-5238 (Fax) 731-5946

Aaron Posnik & Co., Inc.
5 Great Valley Parkway, Suite 244 • Malvern, (Philadelphia) PA 19003
(610) 853-6655 (Fax) 853-6633

Aaron Posnik & Co., Inc.
83 State Street
Springfield, MA 01103

First Class Mail
U.S. POSTAGE
PAID
Permit No. 12
Springfield, MA

RETURN SERVICE REQUESTED

THURSDAY, AUGUST 15TH AT 11:00AM SANFORD, NORTH CAROLINA



STORK RD IV PRINT MACHINE



STORK RD III PRINT MACHINE



Visit our Website @ www.posnik.com

Aaron Posnik

AUCTIONEERS • APPRAISERS

Aaron Posnik & Co., Inc.
83 State Street • Springfield, MA 01103
(413) 733-5238 (Fax) 731-5946

Est. 1932
MA Auc. Lic. #161 • PA Lic. #AU-0038-R

Aaron Posnik & Co., Inc.
5 Great Valley Parkway, Suite 244 • Malvern, (Philadelphia) PA 19003
(610) 853-6655 (Fax) 853-6633